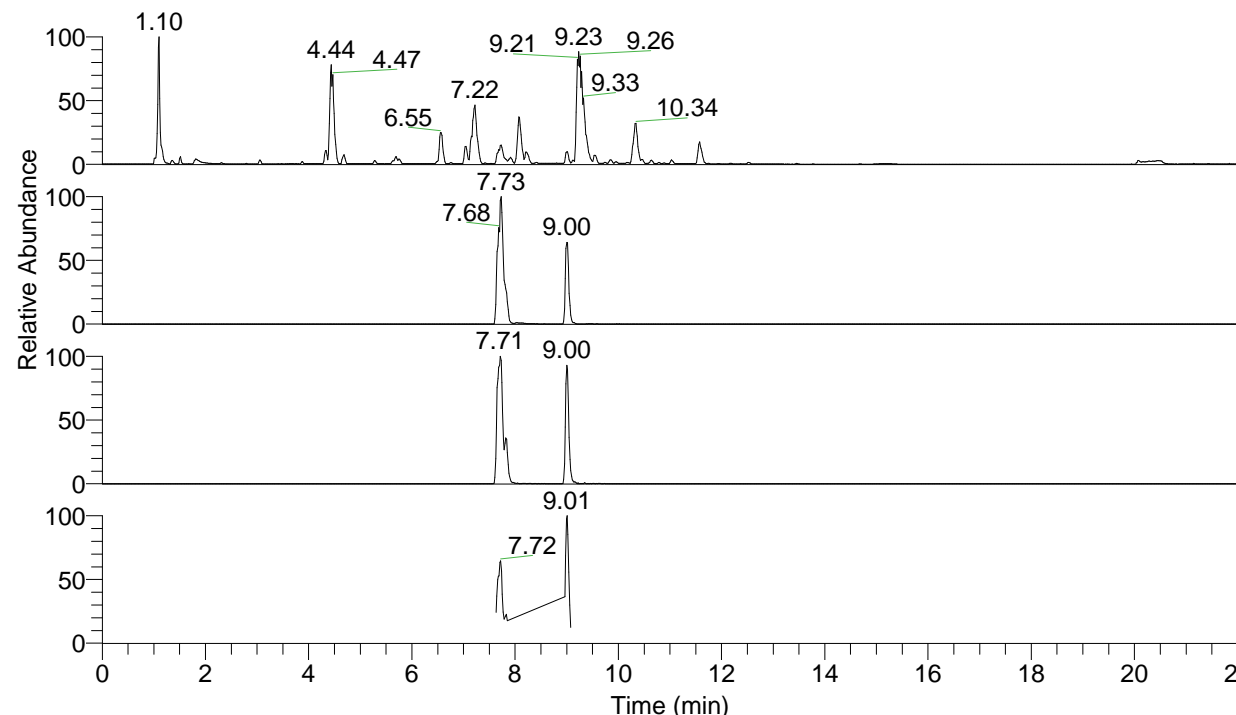


RT: 0.00 - 22.00



NL: 1.25E8
 Base Peak m/z= 100.00000-1500.00000 F:
 FTMS + p ESI Full ms [100.00-1500.00]
 MS Apotteri

NL: 1.91E7
 Base Peak m/z= 417.33209-417.33627 F:
 FTMS + p ESI Full ms [100.00-1500.00]
 MS Apotteri

NL: 1.86E6
 Base Peak m/z= 209.16995-209.17205 F:
 FTMS + p ESI Full ms [100.00-1500.00]
 MS Apotteri

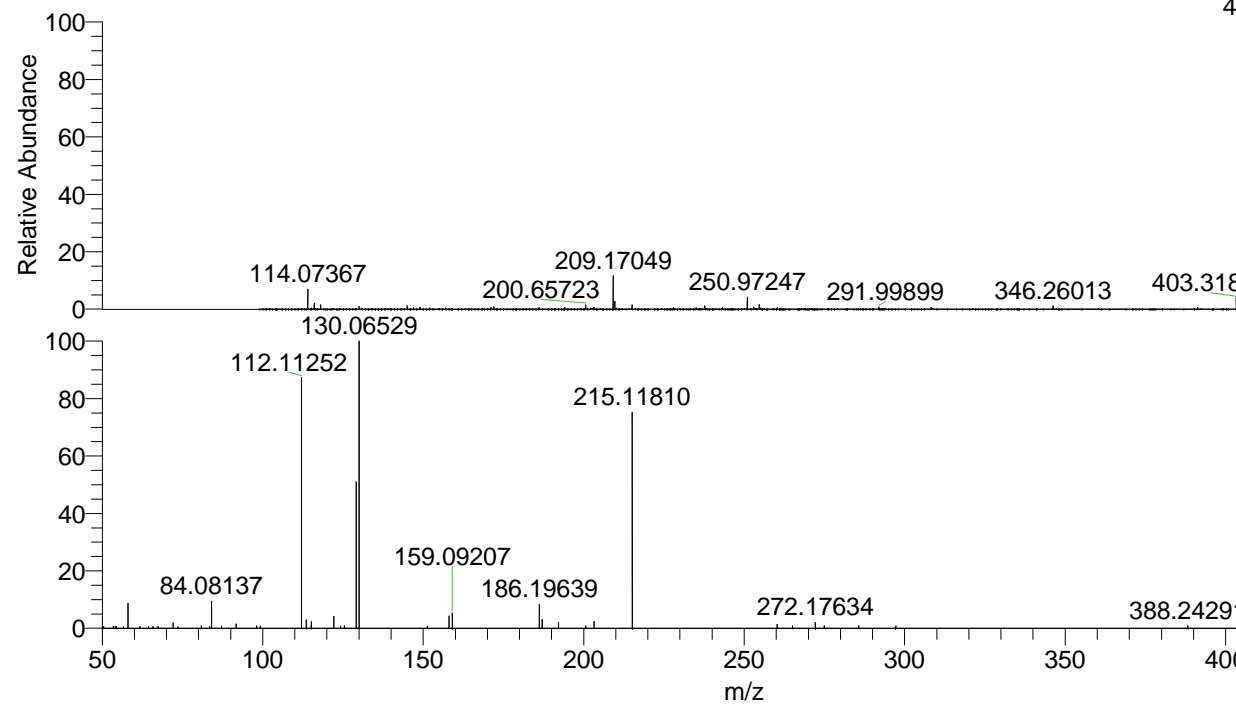
NL: 6.19E5
 Base Peak m/z= 50.00000-1500.00000 F:
 FTMS + p ESI d Full ms2
 209.17@hcd35.00 [50.00-445.00] MS
 Apotteri

Apotteri#3065-3070 RT: 7.63-7.65 AV: 2

F: FTMS + p ESI d Full ms2 209.17 ...

m/z= 50.00000-1000.00000

m/z	Intensity	Relative
50.01600	1169.2	0.63
50.42362	1182.1	0.64
53.44084	1088.1	0.59
54.06580	1150.7	0.62
54.39937	985.9	0.53
54.48584	1051.4	0.57
56.64310	1158.9	0.63
58.06600	16103.2	8.69
61.74292	1096.5	0.59
64.38438	1163.5	0.63
65.76666	1216.6	0.66
67.40034	1180.7	0.64
72.08162	3352.8	1.81
73.63132	1028.9	0.56
80.82108	1458.8	0.79
83.47138	1196.4	0.65
84.08137	17290.4	9.34
87.12775	1385.7	0.75
91.75306	2865.6	1.55
98.09666	1597.2	0.86
99.25477	1261.1	0.68
112.11252	163118.3	88.07
113.61812	5586.5	3.02
115.12353	4185.2	2.26
122.13117	7677.6	4.15
124.22821	1304.9	0.70
125.47019	1723.1	0.93
129.13883	95202.4	51.40
130.06529	185213.8	100.00
151.24270	1438.7	0.78
158.06047	7936.6	4.29
159.09207	9791.8	5.29
186.19639	15355.7	8.29
187.08619	5717.2	3.09
192.14396	3755.7	2.03
200.65946	1464.0	0.79
203.22366	4312.5	2.33
215.11810	141437.0	76.36
260.28141	2566.3	1.39
265.09148	1485.2	0.80
272.17634	3947.9	2.13
274.94530	1646.6	0.89
285.72469	1559.3	0.84
297.24018	1519.8	0.82
388.24291	1542.9	0.83



NL: 1.37E7
 Apotteri#3085 RT: 7.68
 AV: 1 T: FTMS + p ESI
 Full ms [100.00-1500.00]

NL: 1.83E5
 Apotteri#3061-3073 RT:
 7.63-7.65 AV: 2 F: FTMS
 + p ESI d Full ms2
 209.17@hcd35.00
 [50.00-445.00]