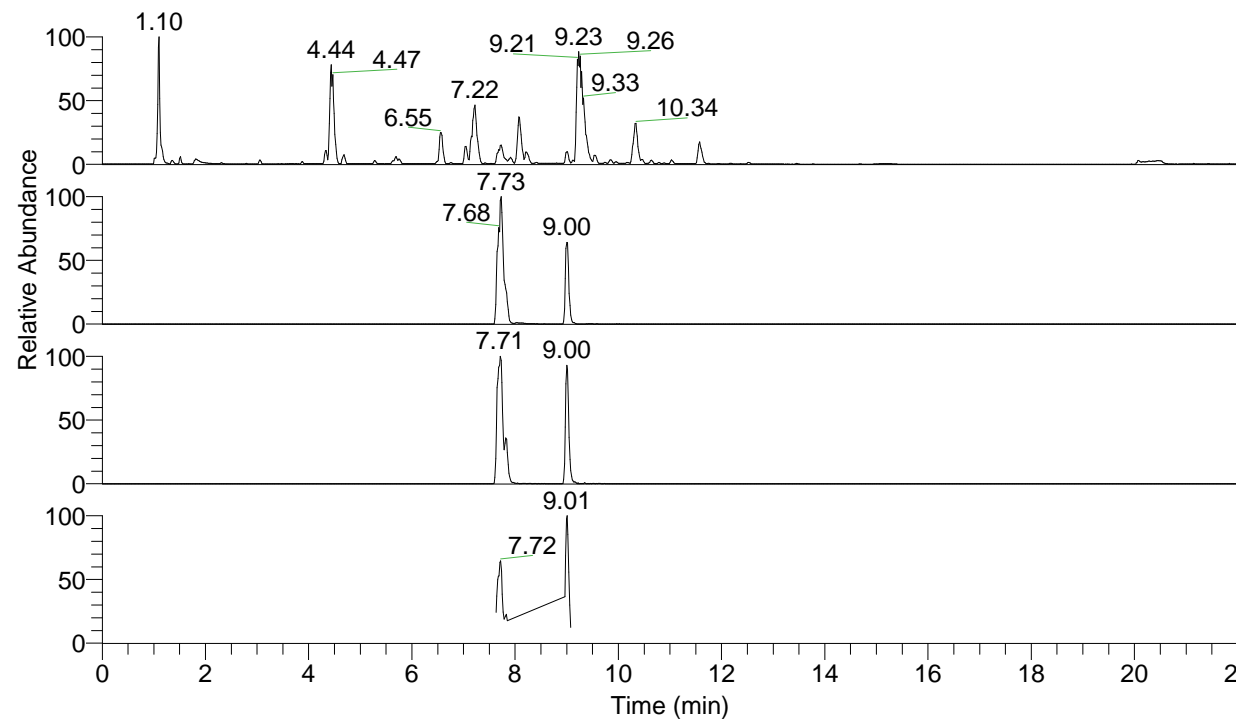


RT: 0.00 - 22.00



NL: 1.25E8
 Base Peak m/z= 100.00000-1500.00000 F:
 FTMS + p ESI Full ms [100.00-1500.00]
 MS Apotteri

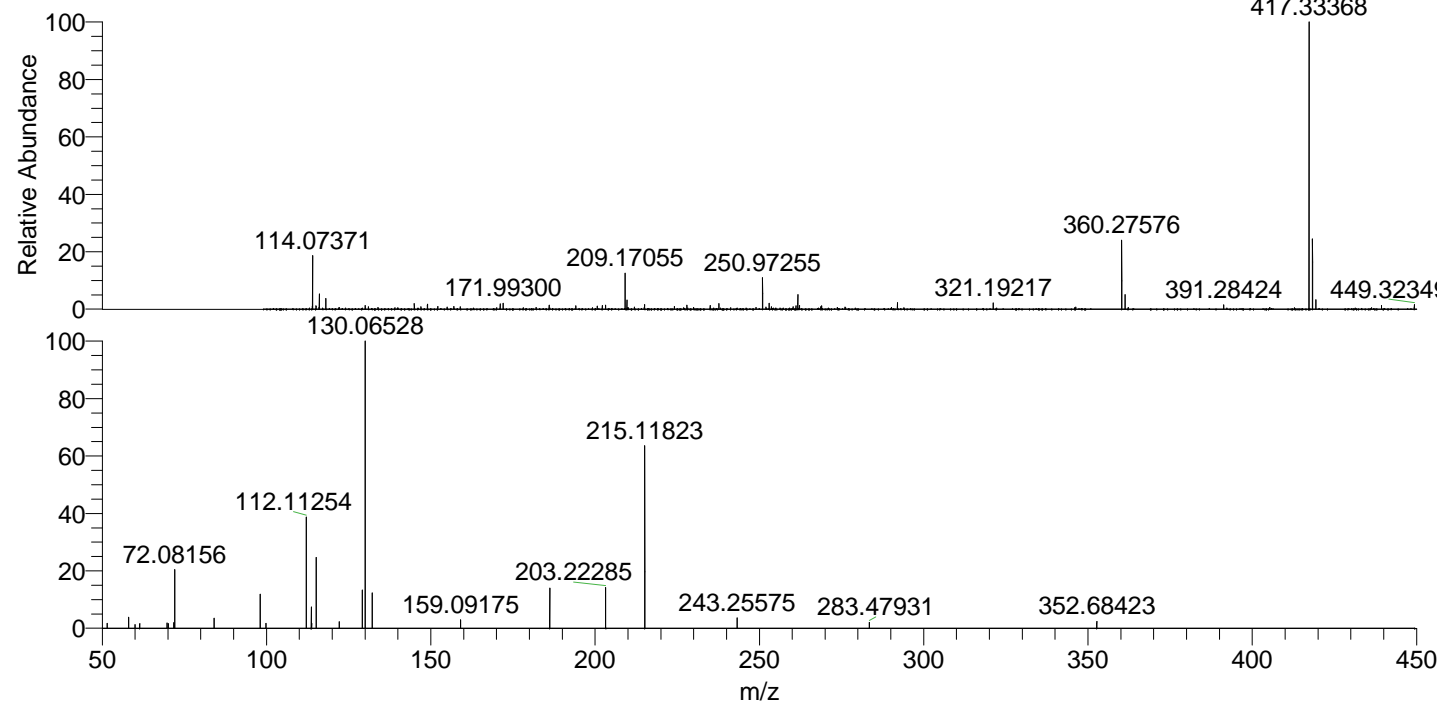
NL: 1.91E7
 Base Peak m/z= 417.33209-417.33627 F:
 FTMS + p ESI Full ms [100.00-1500.00]
 MS Apotteri

NL: 1.86E6
 Base Peak m/z= 209.16995-209.17205 F:
 FTMS + p ESI Full ms [100.00-1500.00]
 MS Apotteri

NL: 6.19E5
 Base Peak m/z= 50.00000-1500.00000 F:
 FTMS + p ESI d Full ms2
 209.17@hcd35.00 [50.00-445.00] MS
 Apotteri

Apotteri#3144 RT: 7.83
 F: FTMS + p ESI d Full ms2 209.17 ...
 m/z= 50.00000-1000.00000

| m/z | Intensity | Relative |
|-----------|-----------|----------|
| 51.50688 | 2483.9 | 1.76 |
| 58.06600 | 5473.0 | 3.87 |
| 60.00364 | 1856.3 | 1.31 |
| 61.39830 | 2260.6 | 1.60 |
| 69.71082 | 2658.9 | 1.88 |
| 70.12924 | 2303.3 | 1.63 |
| 71.73938 | 2767.6 | 1.96 |
| 72.08156 | 28750.3 | 20.33 |
| 84.08139 | 5222.9 | 3.69 |
| 98.09717 | 17009.1 | 12.03 |
| 99.81905 | 2453.1 | 1.73 |
| 112.11254 | 56878.6 | 40.22 |
| 113.61782 | 10687.7 | 7.56 |
| 113.77914 | 2499.0 | 1.77 |
| 115.12326 | 35861.0 | 25.36 |
| 122.13059 | 3325.8 | 2.35 |
| 129.13905 | 19246.0 | 13.61 |
| 130.06528 | 141434.0 | 100.00 |
| 132.14995 | 17339.1 | 12.26 |
| 159.09175 | 4324.5 | 3.06 |
| 186.19708 | 19965.9 | 14.12 |
| 203.22285 | 20287.3 | 14.34 |
| 215.11823 | 95085.8 | 67.23 |
| 243.25575 | 5181.0 | 3.66 |
| 283.47931 | 2872.6 | 2.03 |
| 352.68423 | 3493.2 | 2.47 |



NL: 5.17E6
 Apotteri#3139 RT:
 7.82 AV: 1 T: FTMS +
 p ESI Full ms
 [100.00-1500.00]

NL: 1.40E5
 Apotteri#3138 RT:
 7.83 AV: 1 F: FTMS +
 p ESI d Full ms2
 209.17@hcd35.00
 [50.00-445.00]