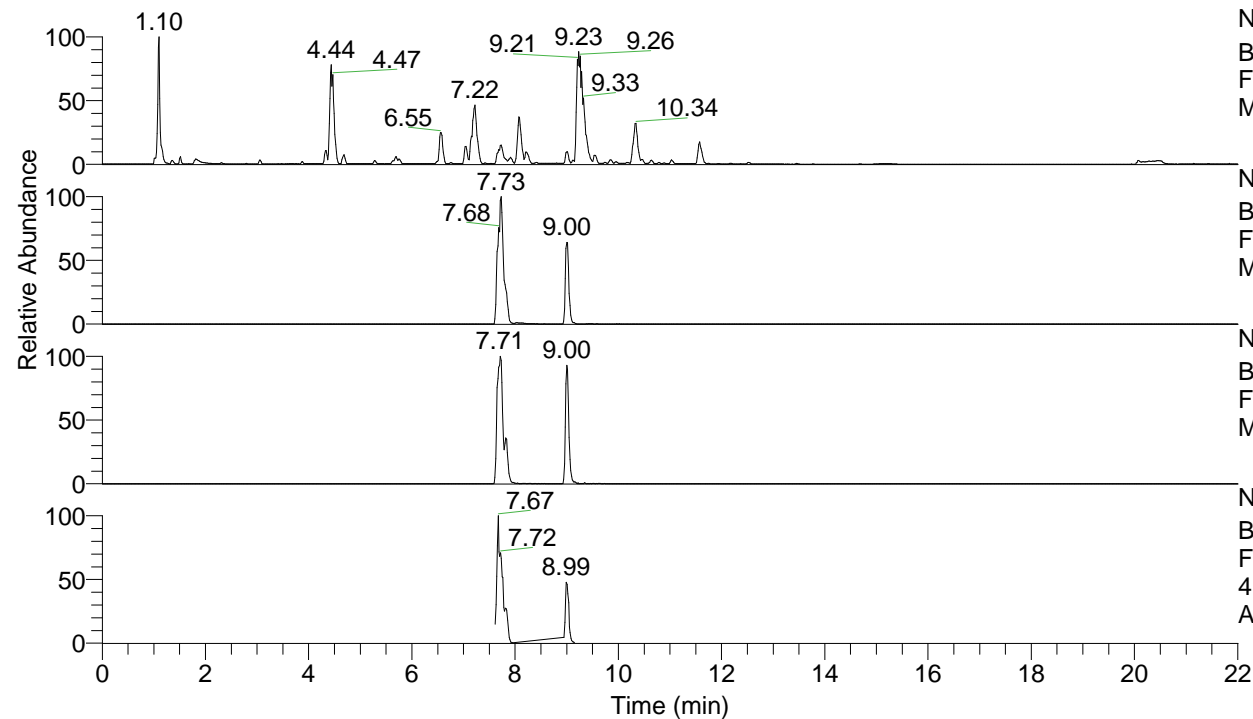


RT: 0.00 - 22.00



NL: 1.25E8
 Base Peak m/z= 100.00000-1500.00000 F:
 FTMS + p ESI Full ms [100.00-1500.00]
 MS Apotteri

NL: 1.91E7
 Base Peak m/z= 417.33209-417.33627 F:
 FTMS + p ESI Full ms [100.00-1500.00]
 MS Apotteri

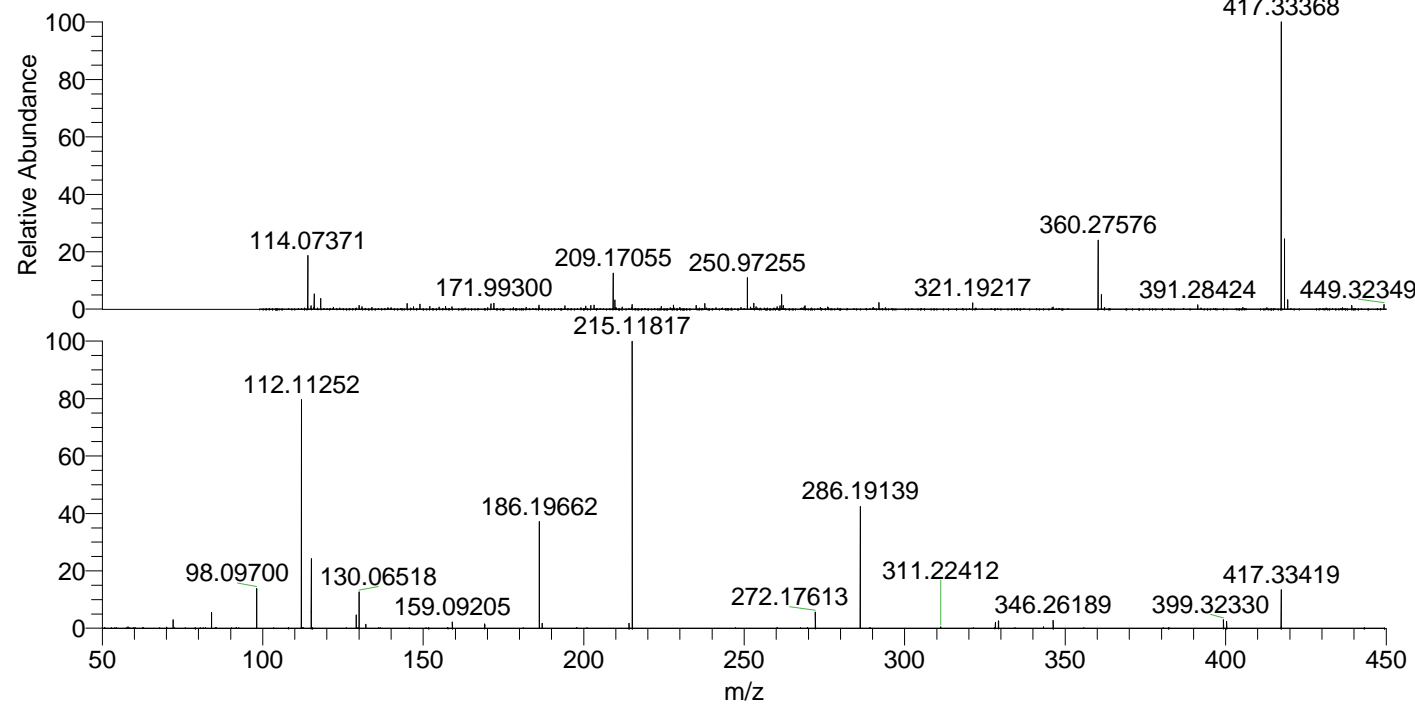
NL: 1.86E6
 Base Peak m/z= 209.16995-209.17205 F:
 FTMS + p ESI Full ms [100.00-1500.00]
 MS Apotteri

NL: 2.91E6
 Base Peak m/z= 50.00000-1500.00000 F:
 FTMS + p ESI d Full ms2
 417.33@hcd35.00 [50.00-445.00] MS
 Apotteri

Apotteri#3140-3159 RT: 7.82-7.87 AV: 4

F: FTMS + p ESI d Full ms2 417.33 ...
 m/z= 50.00000-1000.00000

m/z	Intensity	Relative
58.06604	2964.8	0.52
72.08170	16718.4	2.93
84.08146	31606.0	5.55
98.09700	80222.0	14.08
112.11252	452576.0	79.45
115.12341	138139.5	24.25
129.13898	26895.4	4.72
130.06518	72517.7	12.73
132.14988	8002.1	1.40
159.09205	12022.7	2.11
169.17040	8480.7	1.49
186.19662	209499.8	36.78
187.08753	9738.4	1.71
214.13457	9986.7	1.75
215.11817	569622.6	100.00
272.17613	32506.2	5.71
286.19139	239045.9	41.97
311.22412	2988.0	0.52
328.24963	11833.5	2.08
329.23405	14928.8	2.62
346.26189	15887.6	2.79
399.32330	16947.2	2.98
400.30733	14022.5	2.46
417.33419	77845.5	13.67



NL: 5.17E6
 Apotteri#3139 RT: 7.82
 AV: 1 T: FTMS + p ESI
 Full ms [100.00-1500.00]

NL: 5.64E5
 Apotteri#3135-3162 RT:
 7.82-7.87 AV: 4 F: FTMS
 + p ESI d Full ms2
 417.33@hcd35.00
 [50.00-445.00]