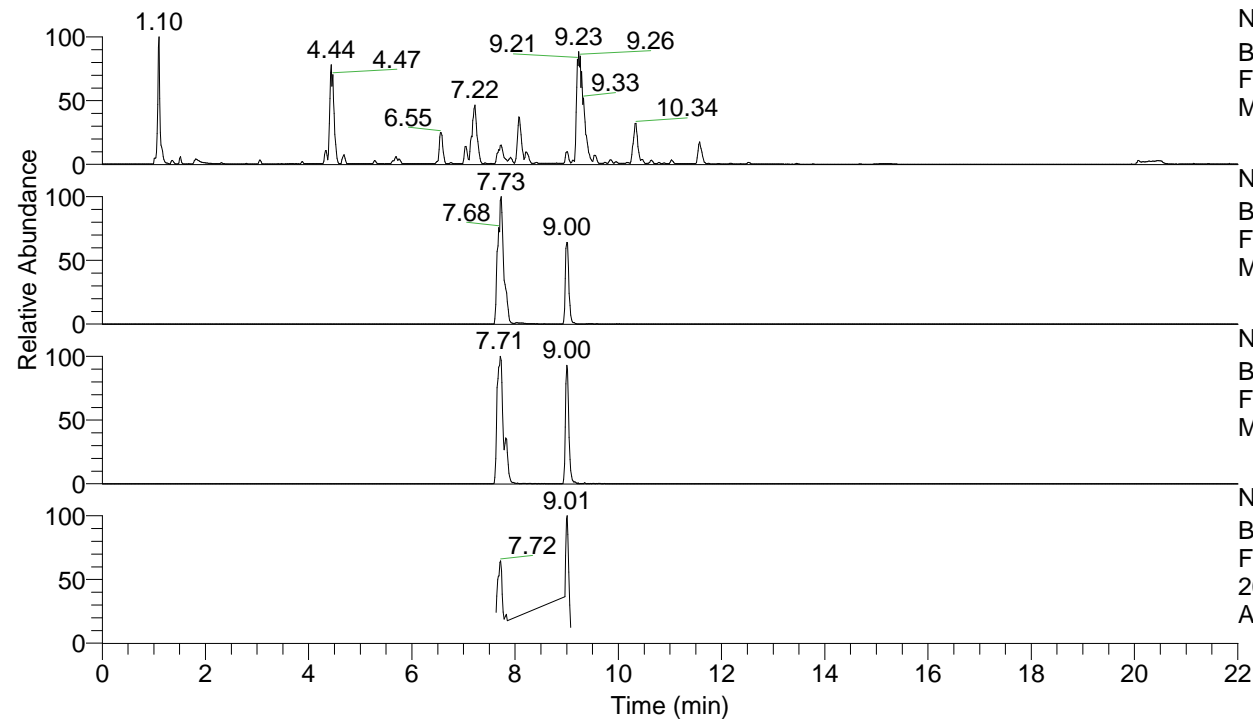


RT: 0.00 - 22.00



NL: 1.25E8
 Base Peak m/z= 100.00000-1500.00000 F:
 FTMS + p ESI Full ms [100.00-1500.00]
 MS Apotteri

NL: 1.91E7
 Base Peak m/z= 417.33209-417.33627 F:
 FTMS + p ESI Full ms [100.00-1500.00]
 MS Apotteri

NL: 1.86E6
 Base Peak m/z= 209.16995-209.17205 F:
 FTMS + p ESI Full ms [100.00-1500.00]
 MS Apotteri

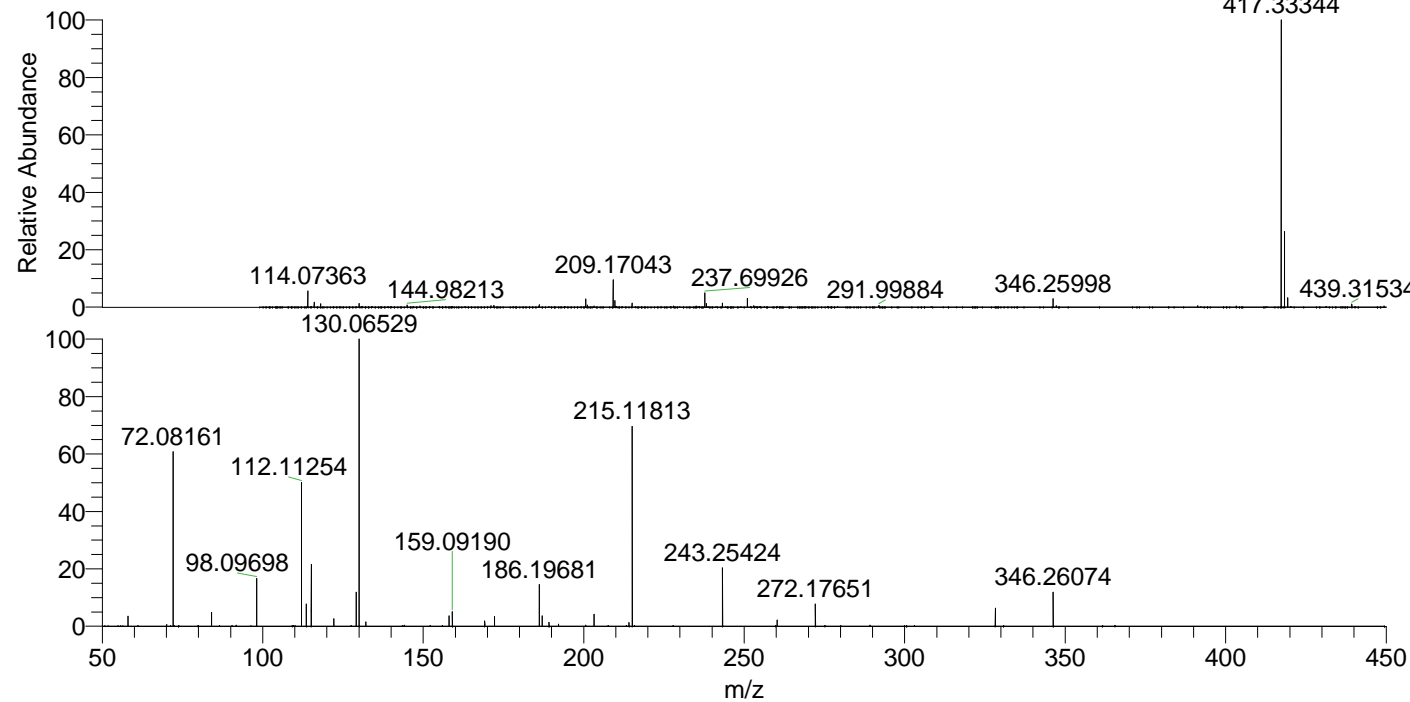
NL: 6.19E5
 Base Peak m/z= 50.00000-1500.00000 F:
 FTMS + p ESI d Full ms2
 209.17@hcd35.00 [50.00-445.00] MS
 Apotteri

Apotteri#3093-3105 RT: 7.70-7.73 AV: 3

F: FTMS + p ESI d Full ms2 209.17 ...

m/z = 50.00000-1000.00000

m/z	Intensity	Relative
58.06596	12412.8	3.44
70.06588	2287.7	0.63
72.08161	217622.6	60.37
84.08141	17098.2	4.74
98.09698	60466.7	16.77
112.11254	177499.0	49.24
113.61789	27459.4	7.62
115.12340	76617.3	21.25
122.13106	9110.4	2.53
129.13885	43530.5	12.08
130.06529	360475.3	100.00
132.14991	5535.6	1.54
158.06010	12865.4	3.57
159.09190	17787.6	4.93
169.16998	6478.3	1.80
172.18114	12021.8	3.33
186.19681	51188.4	14.20
187.08700	12903.6	3.58
189.20813	5014.6	1.39
192.14463	2451.9	0.68
203.22349	14804.5	4.11
214.13332	4701.6	1.30
215.11813	248215.0	68.86
243.25424	71859.5	19.93
260.28090	7586.7	2.10
272.17651	27614.5	7.66
328.24966	22703.9	6.30
346.26074	41898.8	11.62



NL: 1.79E7
 Apotteri#3103 RT: 7.73
 AV: 1 T: FTMS + p ESI
 Full ms [100.00-1500.00]

NL: 3.52E5
 Apotteri#3091-3110 RT:
 7.70-7.73 AV: 3 F: FTMS
 + p ESI d Full ms2
 209.17@hcd35.00
 [50.00-445.00]