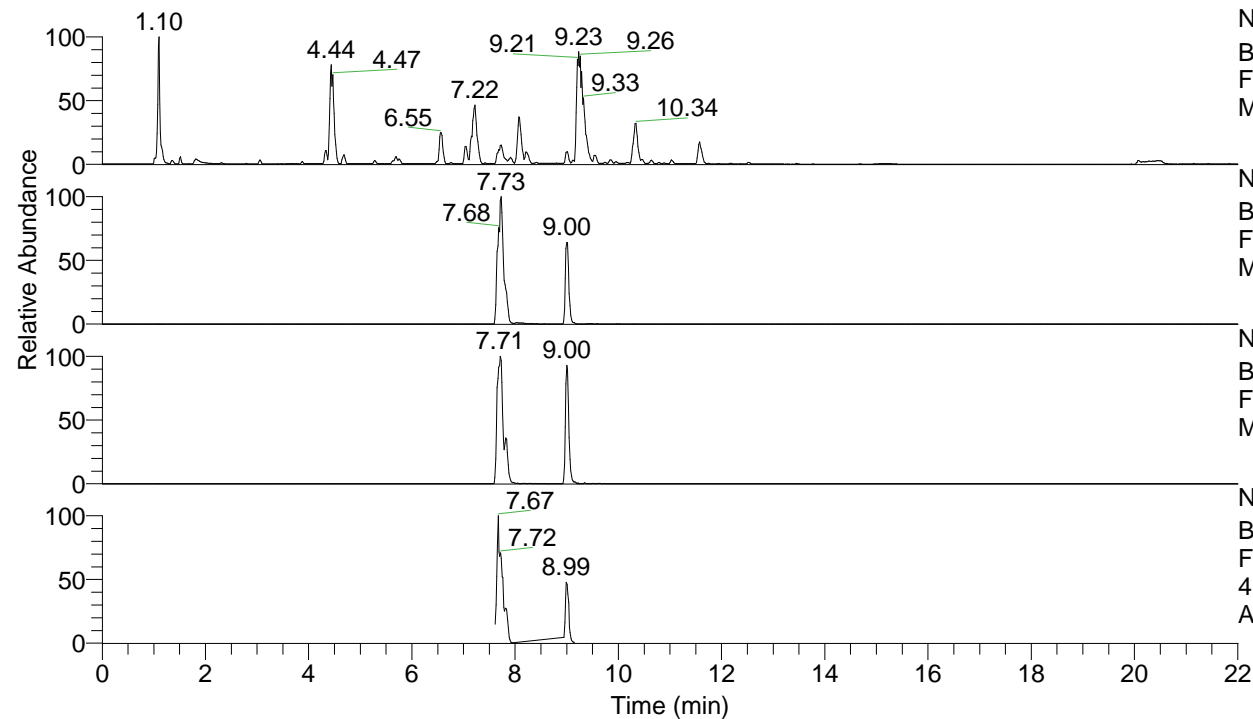


RT: 0.00 - 22.00



NL: 1.25E8
 Base Peak m/z= 100.00000-1500.00000 F:
 FTMS + p ESI Full ms [100.00-1500.00]
 MS Apotteri

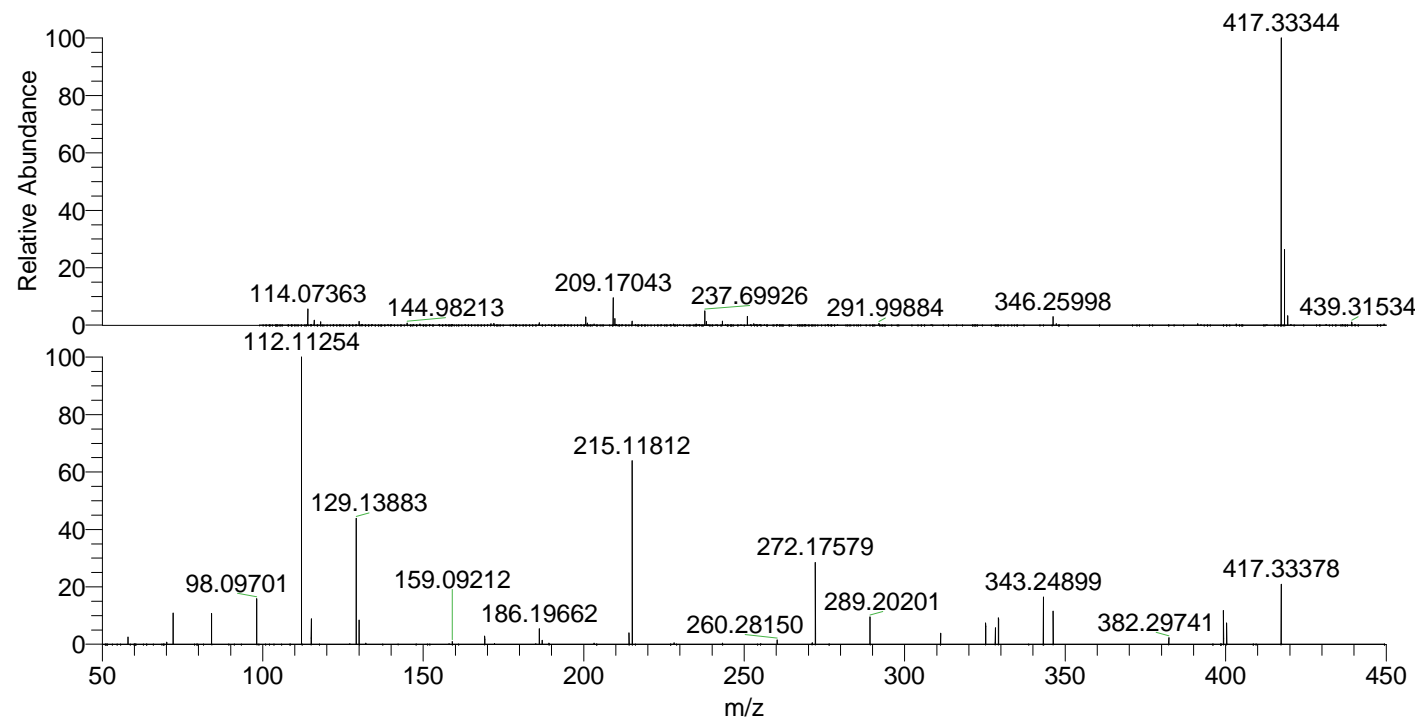
NL: 1.91E7
 Base Peak m/z= 417.33209-417.33627 F:
 FTMS + p ESI Full ms [100.00-1500.00]
 MS Apotteri

NL: 1.86E6
 Base Peak m/z= 209.16995-209.17205 F:
 FTMS + p ESI Full ms [100.00-1500.00]
 MS Apotteri

NL: 2.91E6
 Base Peak m/z= 50.00000-1500.00000 F:
 FTMS + p ESI d Full ms2
 417.33@hcd35.00 [50.00-445.00] MS
 Apotteri

Apotteri#3068-3098 RT: 7.64-7.72 AV: 6
 F: FTMS + p ESI d Full ms2 417.33@h ...
 m/z= 50.00000-1000.00000

m/z	Intensity	Relative
58.06599	50413.6	2.59
70.06578	13852.1	0.71
72.08161	211478.9	10.88
84.08143	210388.3	10.83
98.09701	312673.4	16.09
112.11254	1943456.6	100.00
115.12339	172824.5	8.89
129.13883	881662.9	45.37
130.06523	167226.4	8.60
159.09212	19234.0	0.99
169.16995	54969.7	2.83
186.19662	105319.9	5.42
187.08710	26099.5	1.34
214.13411	76492.5	3.94
215.11812	1248414.0	64.24
260.28150	29041.9	1.49
271.19130	10309.3	0.53
272.17579	564139.2	29.03
289.20201	189355.8	9.74
311.22329	75382.5	3.88
325.23883	144551.3	7.44
328.24923	113495.6	5.84
329.23328	182988.6	9.42
343.24899	323568.3	16.65
346.25983	224289.2	11.54
382.29741	44795.0	2.30
399.32337	228853.4	11.78
400.30750	144892.6	7.46
417.33378	415573.1	21.38



NL: 1.79E7
 Apotteri#3103 RT: 7.73
 AV: 1 T: FTMS + p ESI
 Full ms [100.00-1500.00]

NL: 1.94E6
 Apotteri#3066-3099 RT:
 7.64-7.72 AV: 6 F: FTMS
 + p ESI d Full ms2
 417.33@hcd35.00
 [50.00-445.00]