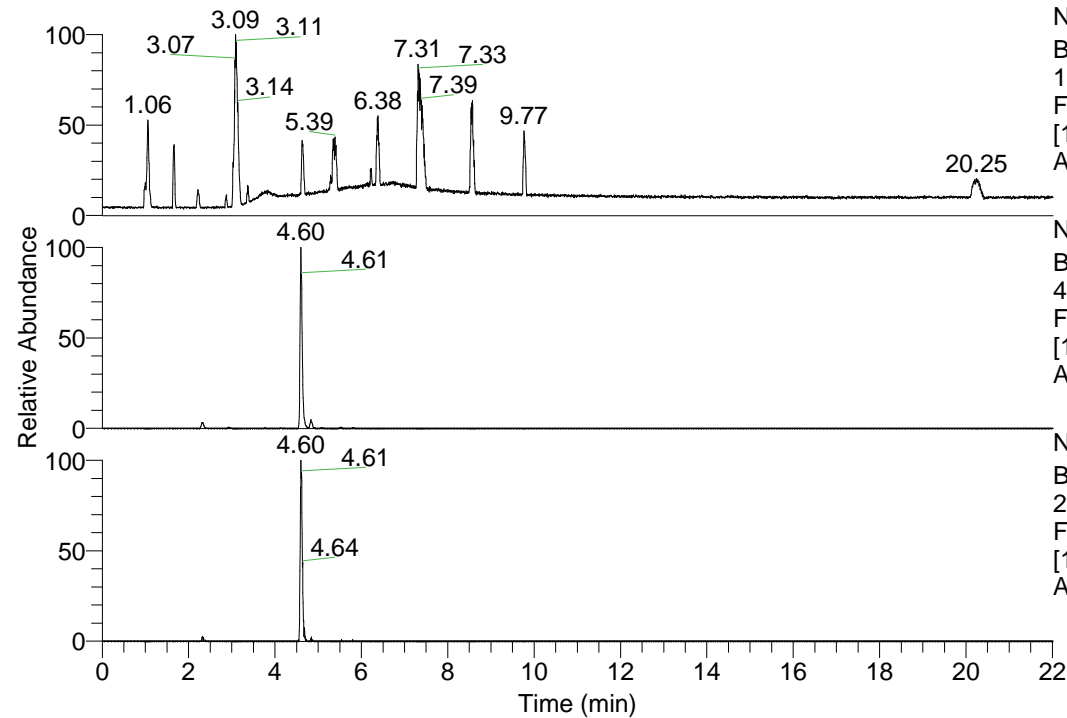


RT: 0.00 - 22.01



NL: 1.69E8  
Base Peak m/z=  
100.00000-1500.00000 F:  
FTMS + p ESI Full ms  
[100.00-1500.00] MS  
Apotteri\_HDX

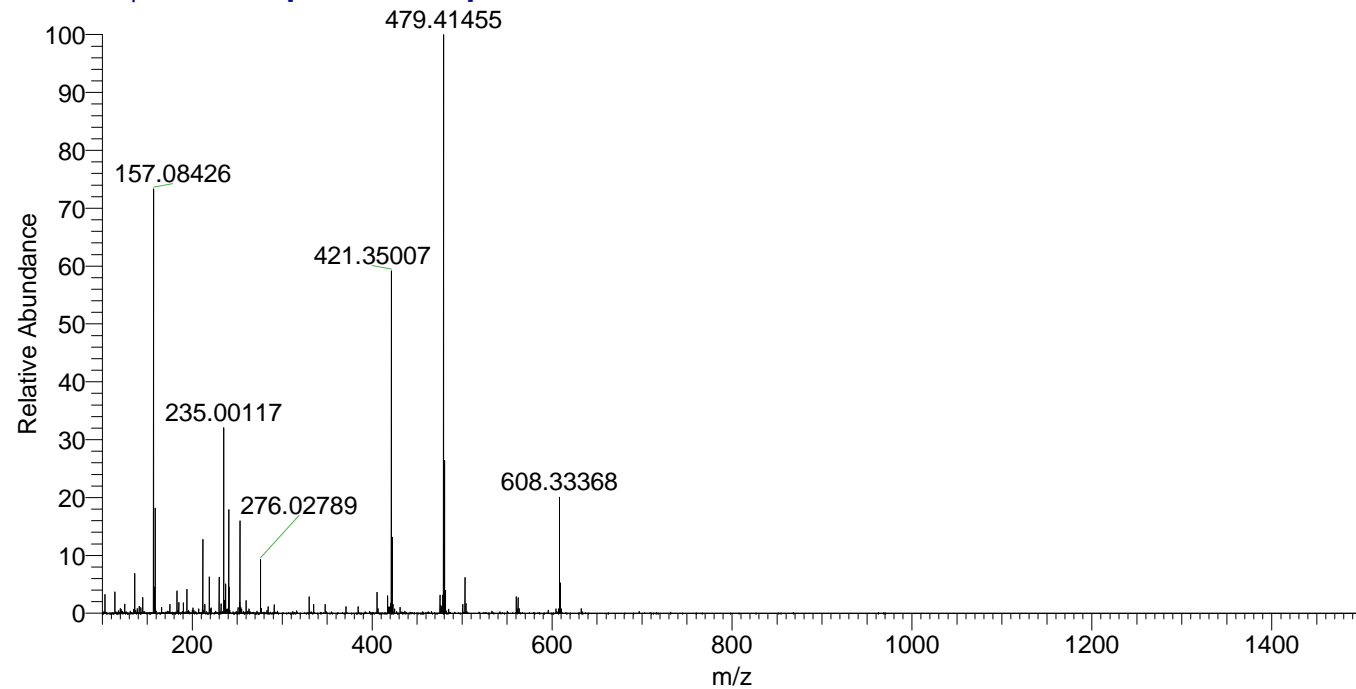
Apotteri\_HDX#721 RT: 4.60  
T: FTMS + p ESI Full ms [100.00-1500.00]  
m/z = 421.00000-422.00000

m/z	Intensity	Relative	Delta (ppm)	Composition
421.35007	16949516.0	100.00	0.47	C <sub>20</sub> H <sub>31</sub> <sup>2</sup> H <sub>8</sub> O <sub>4</sub> N <sub>5</sub>
			-3.21	C <sub>20</sub> H <sub>33</sub> <sup>2</sup> H <sub>7</sub> O <sub>4</sub> N <sub>5</sub>
			4.14	C <sub>20</sub> H <sub>29</sub> <sup>2</sup> H <sub>9</sub> O <sub>4</sub> N <sub>5</sub>

NL: 1.69E7  
Base Peak m/z=  
421.34676-421.35098 F:  
FTMS + p ESI Full ms  
[100.00-1500.00] MS  
Apotteri\_HDX

NL: 4.13E5  
Base Peak m/z=  
211.68043-211.68255 F:  
FTMS + p ESI Full ms  
[100.00-1500.00] MS  
Apotteri\_HDX

Apotteri\_HDX #721 RT: 4.60 AV: 1 NL: 2.81E7  
T: FTMS + p ESI Full ms [100.00-1500.00]



Apotteri\_HDX #721 RT: 4.60 AV: 1 NL: 1.66E7  
T: FTMS + p ESI Full ms [100.00-1500.00]

