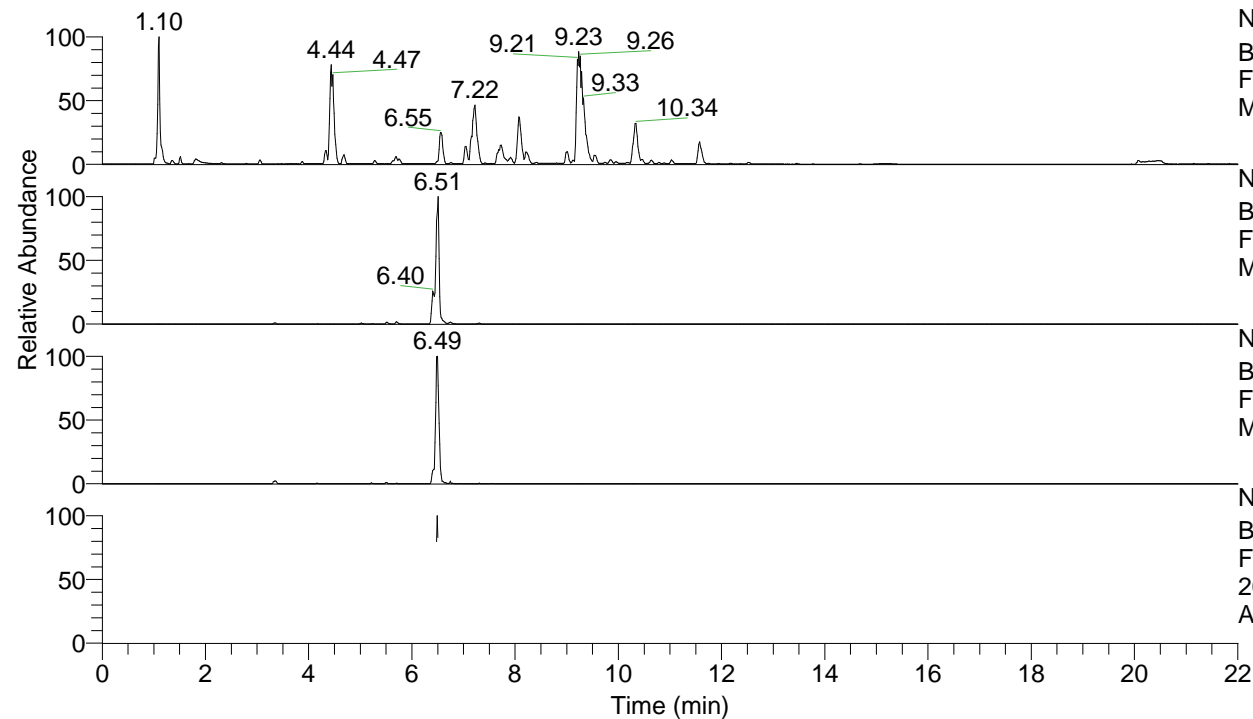


RT: 0.00 - 22.00



NL: 1.25E8
 Base Peak m/z= 100.00000-1500.00000 F:
 FTMS + p ESI Full ms [100.00-1500.00]
 MS Apotteri

NL: 3.33E6
 Base Peak m/z= 412.29032-412.29444 F:
 FTMS + p ESI Full ms [100.00-1500.00]
 MS Apotteri

NL: 3.94E5
 Base Peak m/z= 206.64907-206.65113 F:
 FTMS + p ESI Full ms [100.00-1500.00]
 MS Apotteri

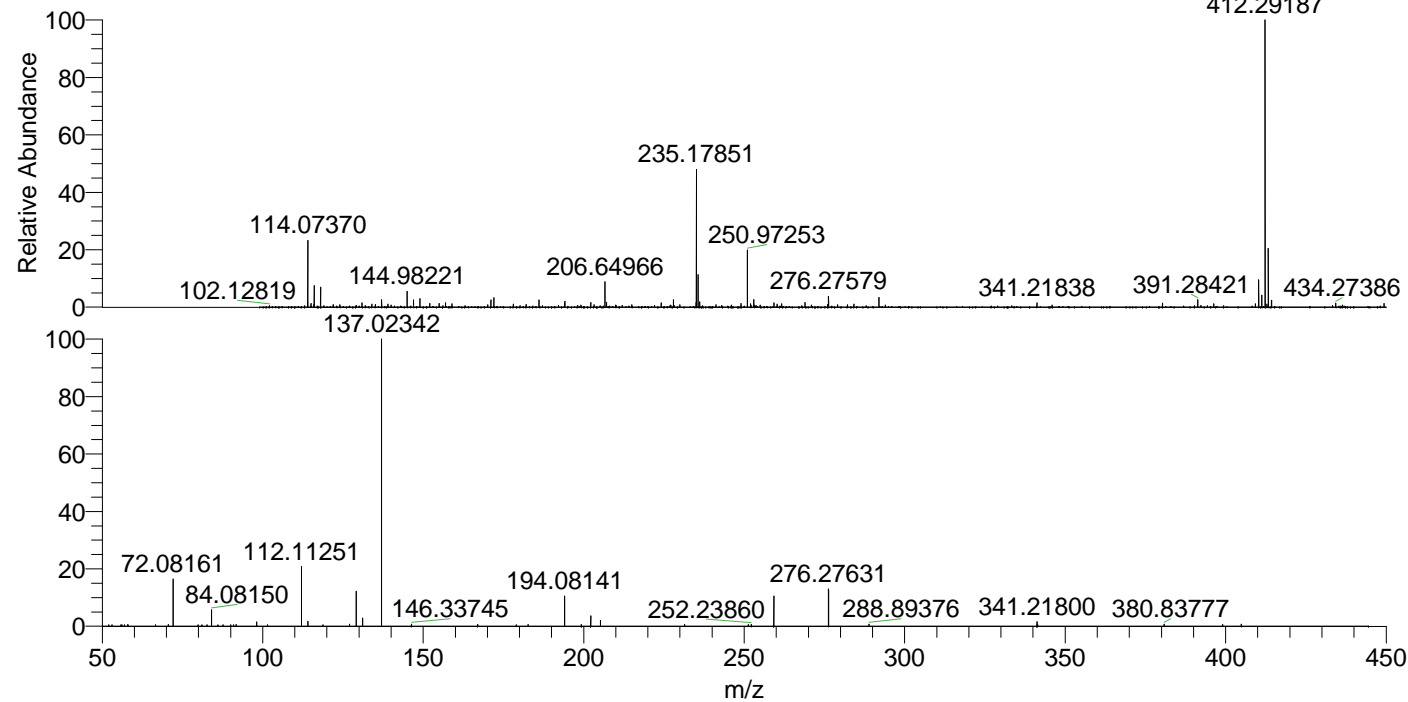
NL: 1.77E5
 Base Peak m/z= 50.00000-1500.00000 F:
 FTMS + p ESI d Full ms2
 206.65@hcd35.00 [50.00-440.00] MS
 Apotteri

Apotteri#2598-2609 RT: 6.48-6.50 AV: 3

F: FTMS + p ESI d Full ms2 206.65 ...

m/z= 50.00000-1000.00000

m/z	Intensity	Relative
52.04811	754.9	0.50
56.09885	775.3	0.52
58.06602	834.0	0.55
70.63402	859.5	0.57
72.08161	25193.8	16.75
81.05191	823.9	0.55
82.61631	774.9	0.52
84.08150	8645.1	5.75
86.06092	774.8	0.52
87.61900	784.5	0.52
90.02176	762.9	0.51
90.95519	822.2	0.55
91.75083	869.0	0.58
98.09690	2260.6	1.50
98.11170	774.9	0.52
101.51318	826.5	0.55
112.11251	31665.5	21.05
114.09184	2648.9	1.76
118.78933	835.6	0.56
127.00410	1025.0	0.68
129.13893	18954.1	12.60
131.11821	4312.2	2.87
137.02342	150428.4	100.00
146.33745	1089.0	0.72
166.97680	907.0	0.60
179.02686	849.3	0.56
182.69452	951.0	0.63
194.08141	15814.7	10.51
199.28443	886.7	0.59
202.19195	5475.3	3.64
205.20258	3038.2	2.02
231.43040	941.1	0.63
251.30247	859.5	0.57
252.23860	965.7	0.64
259.24976	16549.9	11.00
276.27631	20093.5	13.36
288.89376	1055.1	0.70
341.21800	2425.6	1.61
341.42192	889.5	0.59
380.83777	1099.0	0.73
399.08123	990.7	0.66
404.89417	1054.0	0.70



NL: 3.33E6
 Apotteri#2611 RT: 6.51
 AV: 1 T: FTMS + p ESI
 Full ms [100.00-1500.00]

NL: 1.50E5
 Apotteri#2586-2621 RT:
 6.48-6.50 AV: 3 F: FTMS
 + p ESI d Full ms2
 206.65@hcd35.00
 [50.00-440.00]