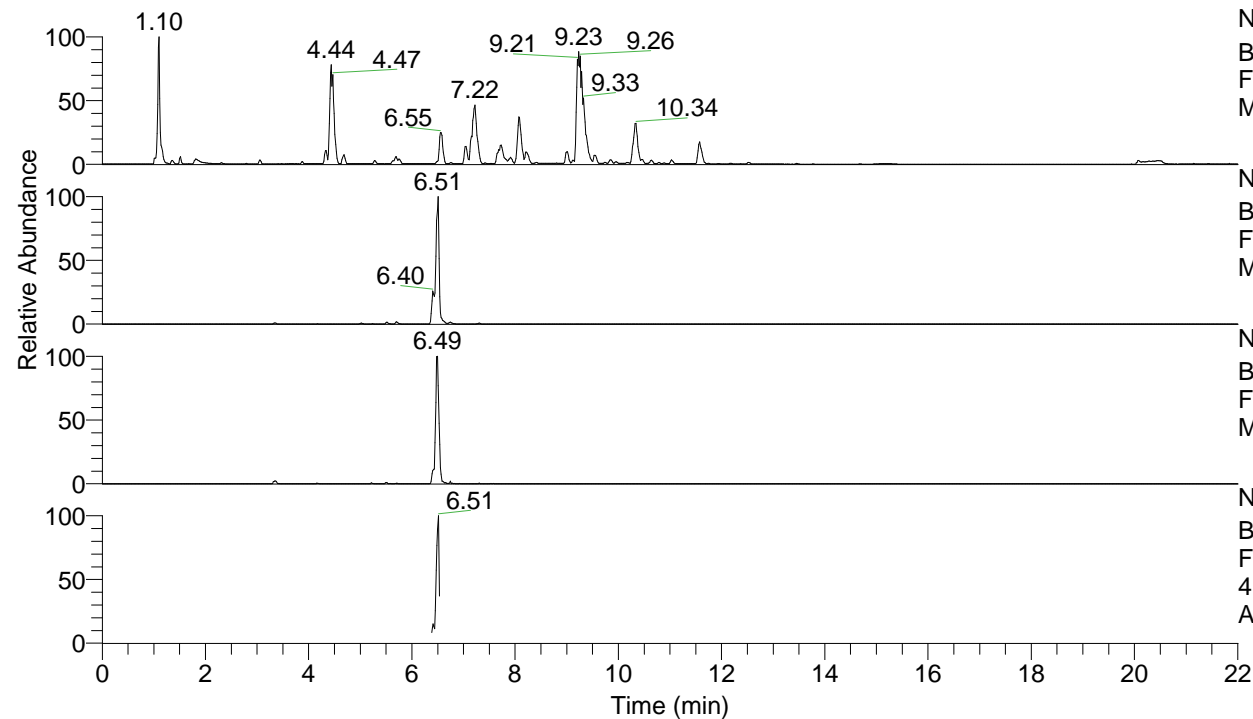


RT: 0.00 - 22.00



NL: 1.25E8
 Base Peak m/z= 100.00000-1500.00000 F:
 FTMS + p ESI Full ms [100.00-1500.00]
 MS Apotteri

NL: 3.33E6
 Base Peak m/z= 412.29032-412.29444 F:
 FTMS + p ESI Full ms [100.00-1500.00]
 MS Apotteri

NL: 3.94E5
 Base Peak m/z= 206.64907-206.65113 F:
 FTMS + p ESI Full ms [100.00-1500.00]
 MS Apotteri

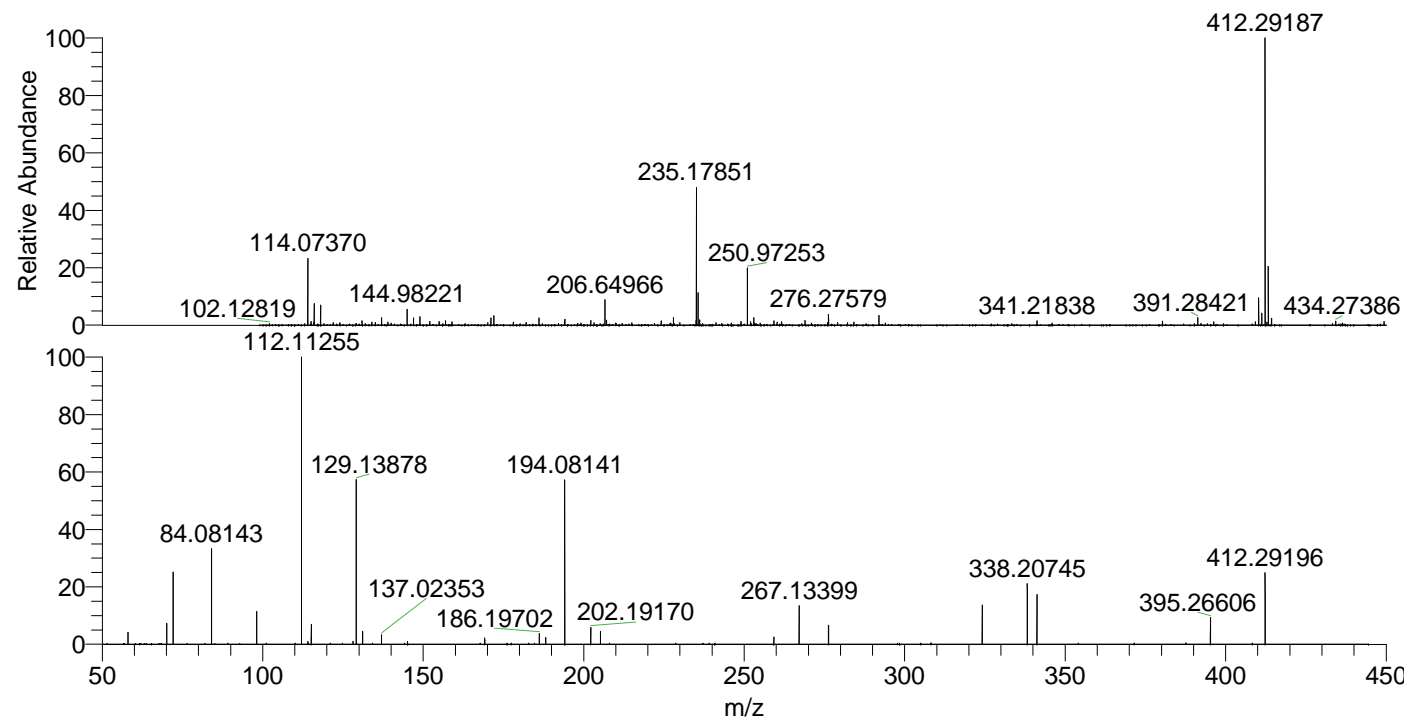
NL: 3.93E5
 Base Peak m/z= 50.00000-1500.00000 F:
 FTMS + p ESI d Full ms2
 412.29@hcd35.00 [50.00-440.00] MS
 Apotteri

Apotteri#2600-2619 RT: 6.48-6.53 AV: 4

F: FTMS + p ESI d Full ms2 412.29 ...

m/z= 50.00000-1000.00000

m/z	Intensity	Relative
58.06600	11796.4	4.23
70.06594	20560.7	7.36
72.08160	70984.4	25.42
84.08143	92969.5	33.30
98.09703	32263.7	11.56
112.11255	279204.4	100.00
114.09174	2733.3	0.98
115.12344	19548.2	7.00
128.10699	2889.9	1.04
129.13878	164369.4	58.87
131.11808	12652.5	4.53
137.02353	9170.4	3.28
145.13356	2733.1	0.98
169.17007	6043.6	2.16
186.19702	10291.7	3.69
188.17610	6707.4	2.40
194.08141	158973.4	56.94
202.19170	16152.7	5.79
205.20266	12441.5	4.46
259.24935	7110.3	2.55
267.13399	37712.6	13.51
276.27633	18980.3	6.80
324.19100	38265.5	13.71
338.20745	59060.7	21.15
341.21828	48325.5	17.31
395.26606	25961.3	9.30
412.29196	71819.9	25.72



NL: 3.33E6
 Apotteri#2611 RT: 6.51
 AV: 1 T: FTMS + p ESI
 Full ms [100.00-1500.00]

NL: 2.78E5
 Apotteri#2598-2620 RT:
 6.48-6.53 AV: 4 F: FTMS
 + p ESI d Full ms2
 412.29@hcd35.00
 [50.00-440.00]