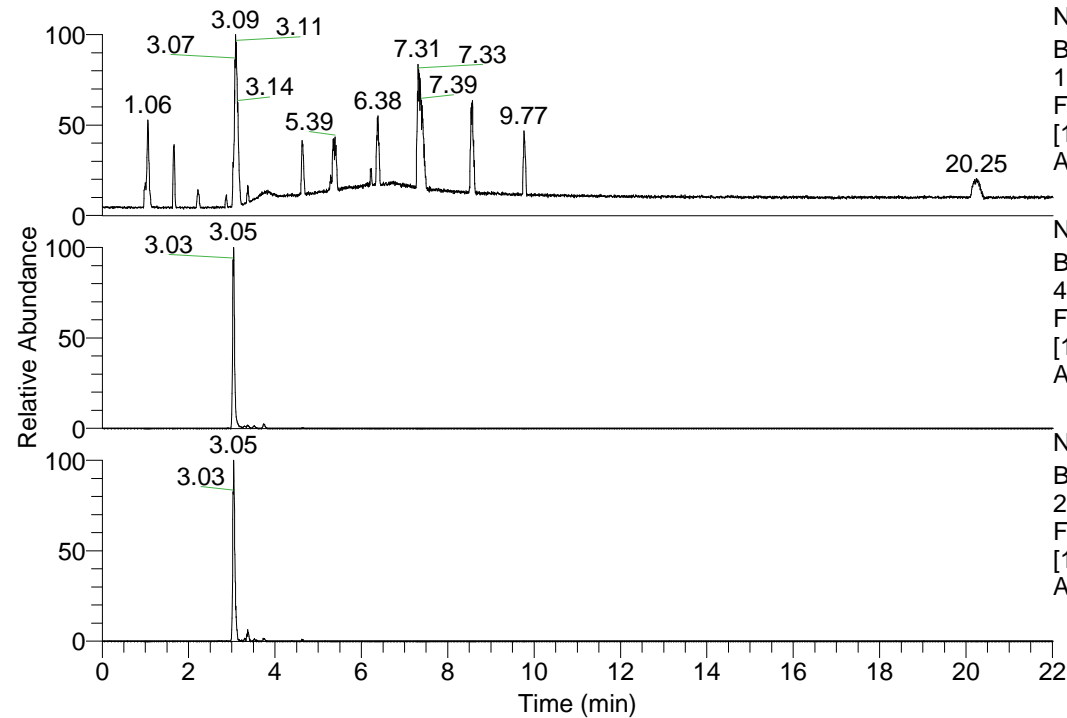


RT: 0.00 - 22.01



NL: 1.69E8  
 Base Peak m/z=  
 100.00000-1500.00000 F:  
 FTMS + p ESI Full ms  
 [100.00-1500.00] MS  
 Apotteri\_HDX

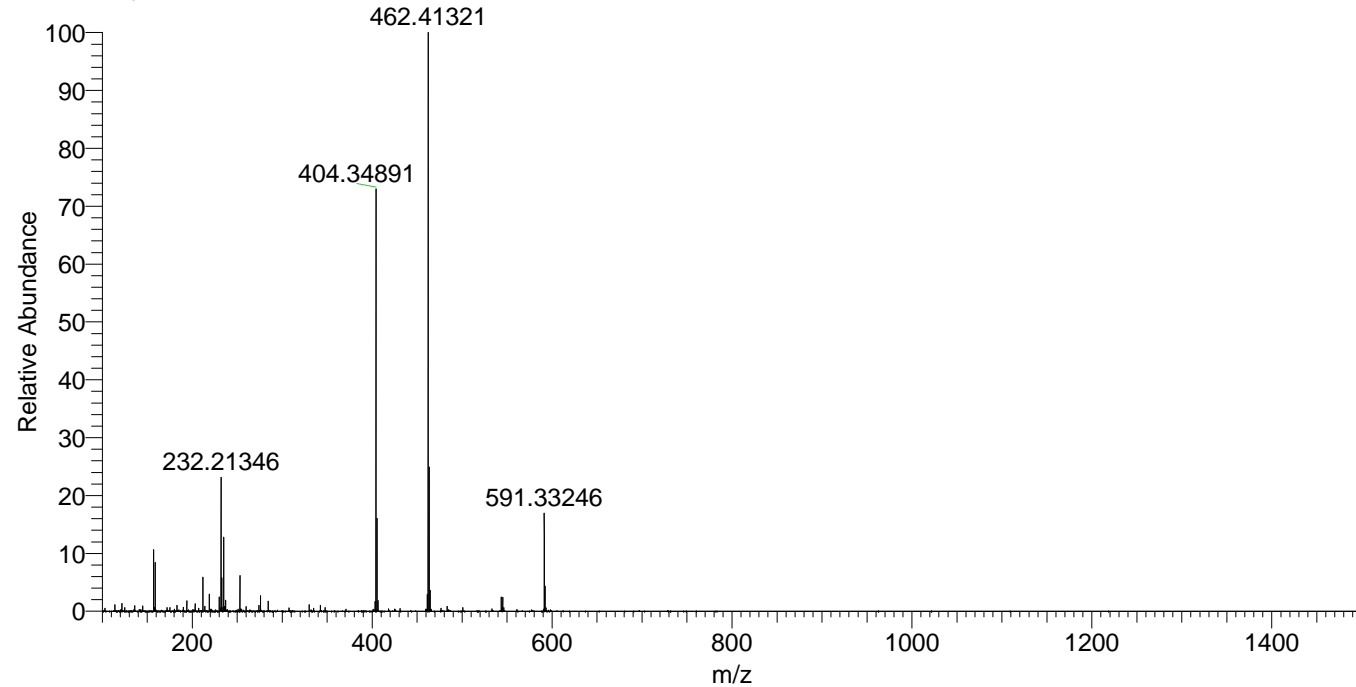
NL: 5.35E7  
 Base Peak m/z=  
 404.34566-404.34970 F:  
 FTMS + p ESI Full ms  
 [100.00-1500.00] MS  
 Apotteri\_HDX

NL: 1.03E6  
 Base Peak m/z=  
 203.17987-203.18191 F:  
 FTMS + p ESI Full ms  
 [100.00-1500.00] MS  
 Apotteri\_HDX

Apotteri\_HDX#467 RT: 3.05  
 T: FTMS + p ESI Full ms [100.00-1500.00]  
 m/z= 404.00000-405.00000

m/z	Intensity	Relative	Delta (ppm)	Composition
404.34891	49595776.0	100.00	0.57	C <sub>20</sub> H <sub>32</sub> <sup>2</sup> H <sub>7</sub> O <sub>3</sub> N <sub>5</sub>
			-3.26	C <sub>20</sub> H <sub>34</sub> <sup>2</sup> H <sub>6</sub> O <sub>3</sub> N <sub>5</sub>
			4.39	C <sub>20</sub> H <sub>30</sub> <sup>2</sup> H <sub>8</sub> O <sub>3</sub> N <sub>5</sub>

Apotteri\_HDX #467 RT: 3.05 AV: 1 NL: 6.62E7  
 T: FTMS + p ESI Full ms [100.00-1500.00]



Apotteri\_HDX #467 RT: 3.05 AV: 1 NL: 4.83E7  
 T: FTMS + p ESI Full ms [100.00-1500.00]

