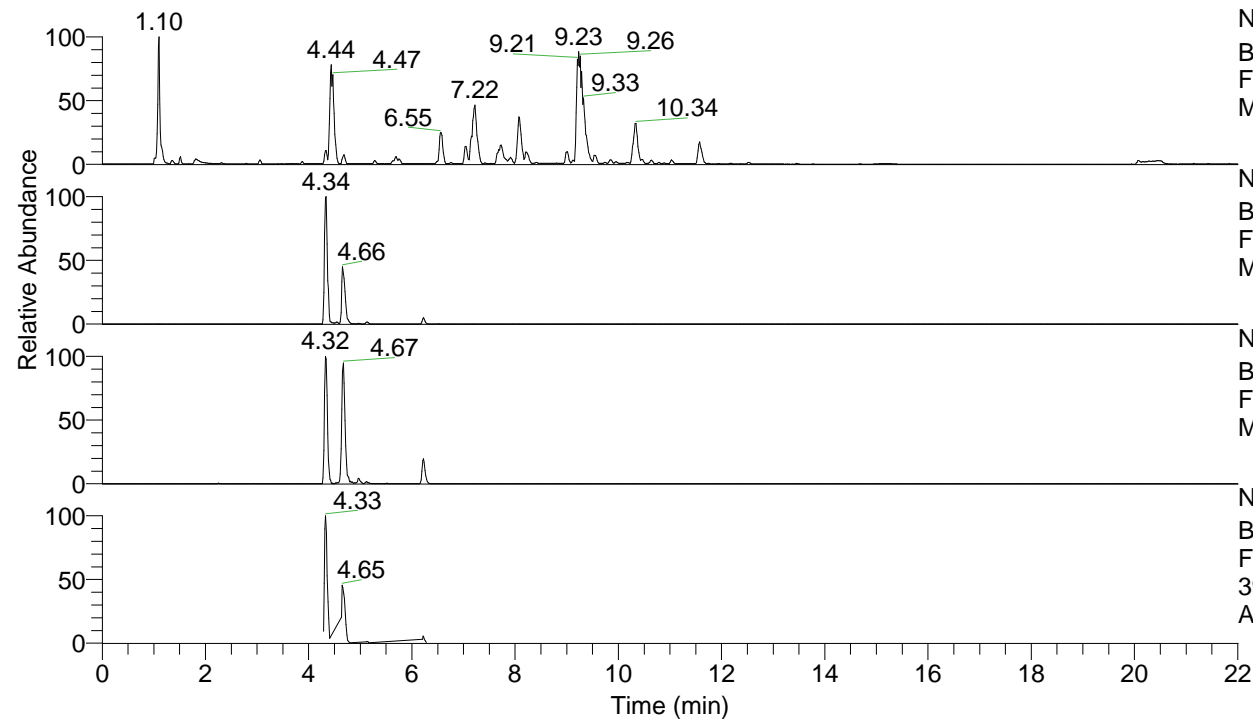


RT: 0.00 - 22.00



NL: 1.25E8
 Base Peak m/z= 100.00000-1500.00000 F:
 FTMS + p ESI Full ms [100.00-1500.00]
 MS Apotteri

NL: 1.37E7
 Base Peak m/z= 396.29549-396.29945 F:
 FTMS + p ESI Full ms [100.00-1500.00]
 MS Apotteri

NL: 9.16E5
 Base Peak m/z= 198.65166-198.65364 F:
 FTMS + p ESI Full ms [100.00-1500.00]
 MS Apotteri

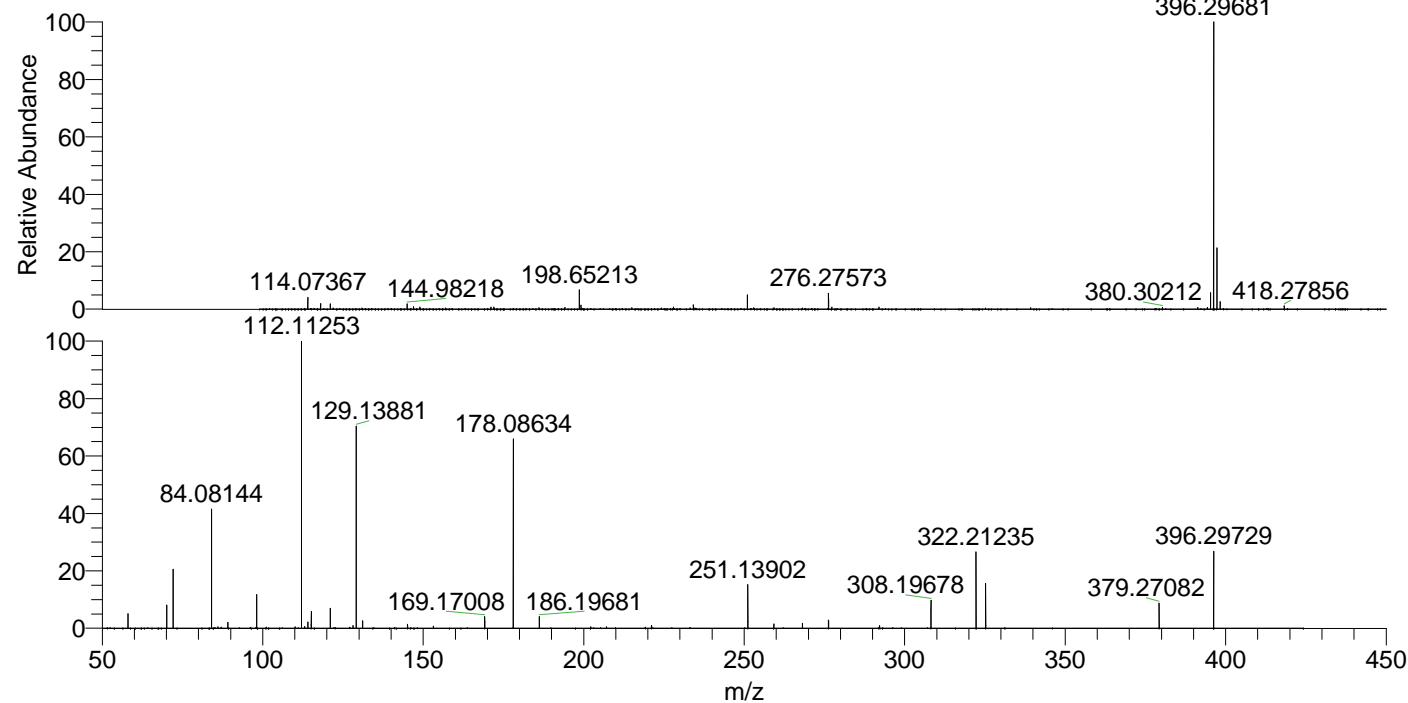
NL: 1.62E6
 Base Peak m/z= 50.00000-1500.00000 F:
 FTMS + p ESI d Full ms2
 396.30@hcd35.00 [50.00-420.00] MS
 Apotteri

Apotteri#1721-1748 RT: 4.29-4.36 AV: 6

F: FTMS + p ESI d Full ms2 396.30 ...

m/z= 50.00000-1000.00000

m/z	Intensity	Relative
58.06597	49575.7	5.10
70.06593	78806.0	8.11
72.08159	202435.5	20.83
84.08144	402564.3	41.41
89.10805	19475.0	2.00
98.09694	116786.9	12.01
110.09667	5348.5	0.55
112.11253	972029.9	100.00
113.10792	5433.9	0.56
114.09181	22065.7	2.27
115.12346	56809.6	5.84
121.02853	67513.6	6.95
128.10720	8866.8	0.91
129.13881	700400.1	72.06
131.11826	25559.5	2.63
145.13400	13526.1	1.39
153.13885	6622.2	0.68
169.17008	39192.7	4.03
178.08634	636445.9	65.48
186.19681	38828.9	3.99
207.11254	5248.0	0.54
221.12904	8754.6	0.90
251.13902	146512.5	15.07
259.24970	14885.2	1.53
268.16586	17498.6	1.80
276.27548	28138.2	2.89
292.20153	9422.6	0.97
308.19678	95927.2	9.87
322.21235	259913.6	26.74
325.22309	151943.8	15.63
379.27082	85098.7	8.75
396.29729	259021.9	26.65



NL: 1.31E7
 Apotteri#1741 RT: 4.34
 AV: 1 T: FTMS + p ESI
 Full ms [100.00-1500.00]

NL: 9.65E5
 Apotteri#1719-1753 RT:
 4.29-4.36 AV: 6 F: FTMS
 + p ESI d Full ms2
 396.30@hcd35.00
 [50.00-420.00]