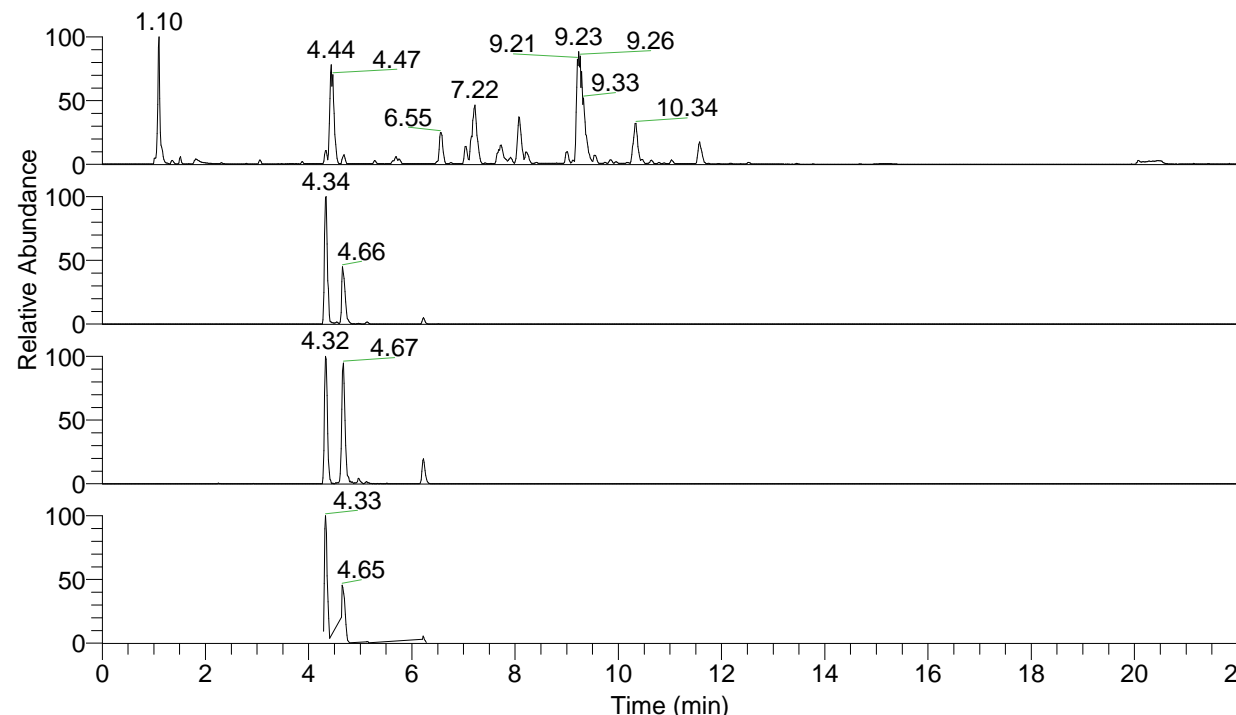


RT: 0.00 - 22.00



NL: 1.25E8
 Base Peak m/z= 100.00000-1500.00000 F:
 FTMS + p ESI Full ms [100.00-1500.00]
 MS Apotteri

NL: 1.37E7
 Base Peak m/z= 396.29549-396.29945 F:
 FTMS + p ESI Full ms [100.00-1500.00]
 MS Apotteri

NL: 9.16E5
 Base Peak m/z= 198.65166-198.65364 F:
 FTMS + p ESI Full ms [100.00-1500.00]
 MS Apotteri

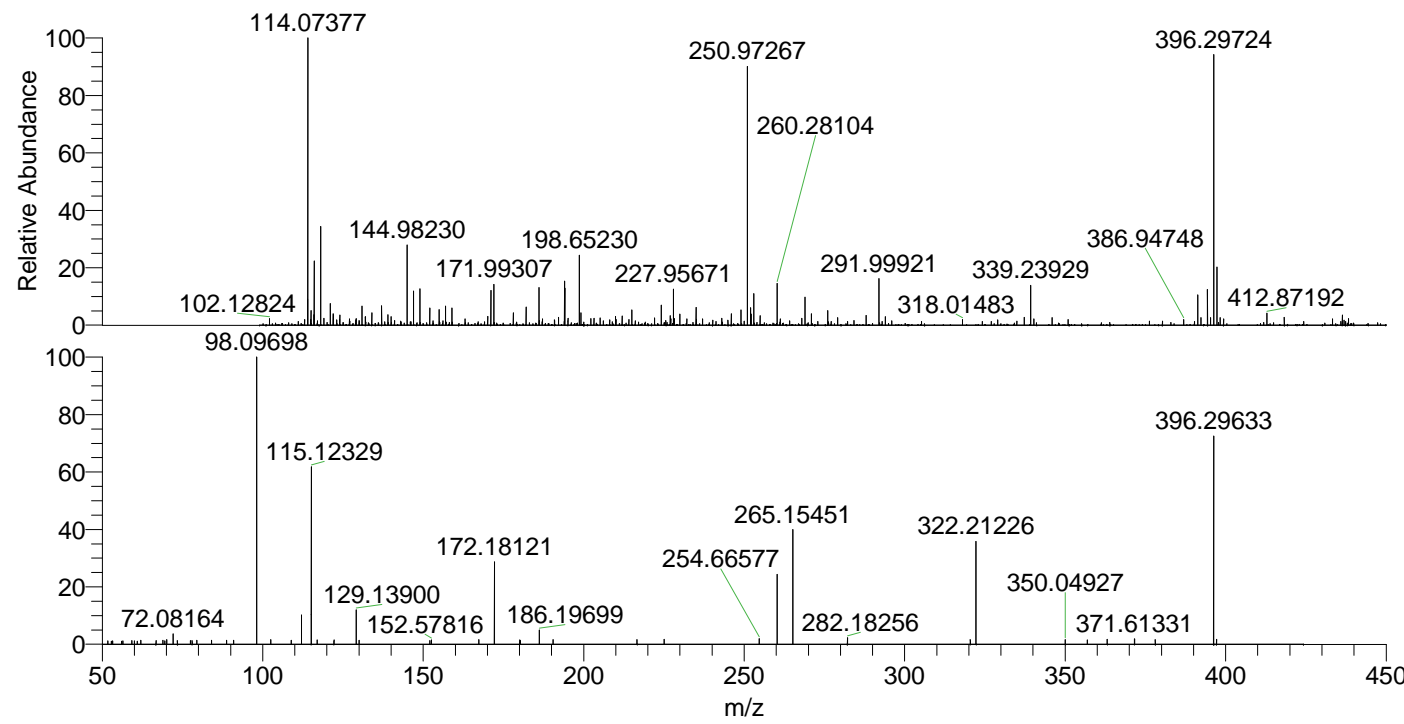
NL: 1.62E6
 Base Peak m/z= 50.00000-1500.00000 F:
 FTMS + p ESI d Full ms2
 396.30@hcd35.00 [50.00-420.00] MS
 Apotteri

Apotteri#2489-2505 RT: 6.20-6.25 AV: 4

F: FTMS + p ESI d Full ms2 396.30 ...

m/z = 50.00000-1000.00000

m/z	Intensity	Relative
51.69798	739.6	1.18
51.72592	746.3	1.19
52.88117	674.6	1.07
53.24445	729.1	1.16
55.99404	658.8	1.05
56.41084	712.4	1.13
59.25150	813.0	1.29
59.97722	753.5	1.20
60.93544	670.3	1.07
62.06355	856.4	1.36
66.75552	783.9	1.25
68.87759	839.8	1.34
69.46496	778.9	1.24
70.06565	984.0	1.57
72.08164	2238.4	3.56
73.43315	839.6	1.34
77.45677	806.9	1.28
78.02175	811.7	1.29
79.47867	878.1	1.40
84.08182	903.3	1.44
88.74109	866.0	1.38
90.92652	906.9	1.44
98.09698	62839.8	100.00
102.46257	985.5	1.57
108.84977	887.1	1.41
108.93159	884.8	1.41
112.11256	6413.2	10.21
115.12329	38733.3	61.64
116.94181	925.7	1.47
122.20317	960.7	1.53
129.13900	7568.7	12.04
130.03592	875.4	1.39
152.08043	840.1	1.34
152.57816	978.4	1.56
167.30560	986.4	1.57
172.18121	18008.1	28.66
180.05077	1007.3	1.60
180.32404	851.7	1.36
186.19699	3170.3	5.05
190.49231	1008.5	1.60
216.63114	1013.3	1.61
225.09573	1065.5	1.70
254.66577	1228.1	1.95
260.28203	15463.8	24.61
265.15451	25059.8	39.88
282.18256	1418.8	2.26
320.45343	1006.6	1.60
322.21226	23226.9	36.96
350.04927	1051.3	1.67
356.90208	971.6	1.55
363.11141	1088.2	1.73
371.61331	1218.3	1.94
378.07777	1044.7	1.66
396.29633	45506.3	72.42
397.18140	1080.3	1.72



NL: 7.04E5
 Apotteri#2497 RT: 6.22
 AV: 1 T: FTMS + p ESI
 Full ms [100.00-1500.00]

NL: 6.27E4
 Apotteri#2486-2508 RT:
 6.20-6.25 AV: 4 F: FTMS
 + p ESI d Full ms2
 396.30@hcd35.00
 [50.00-420.00]