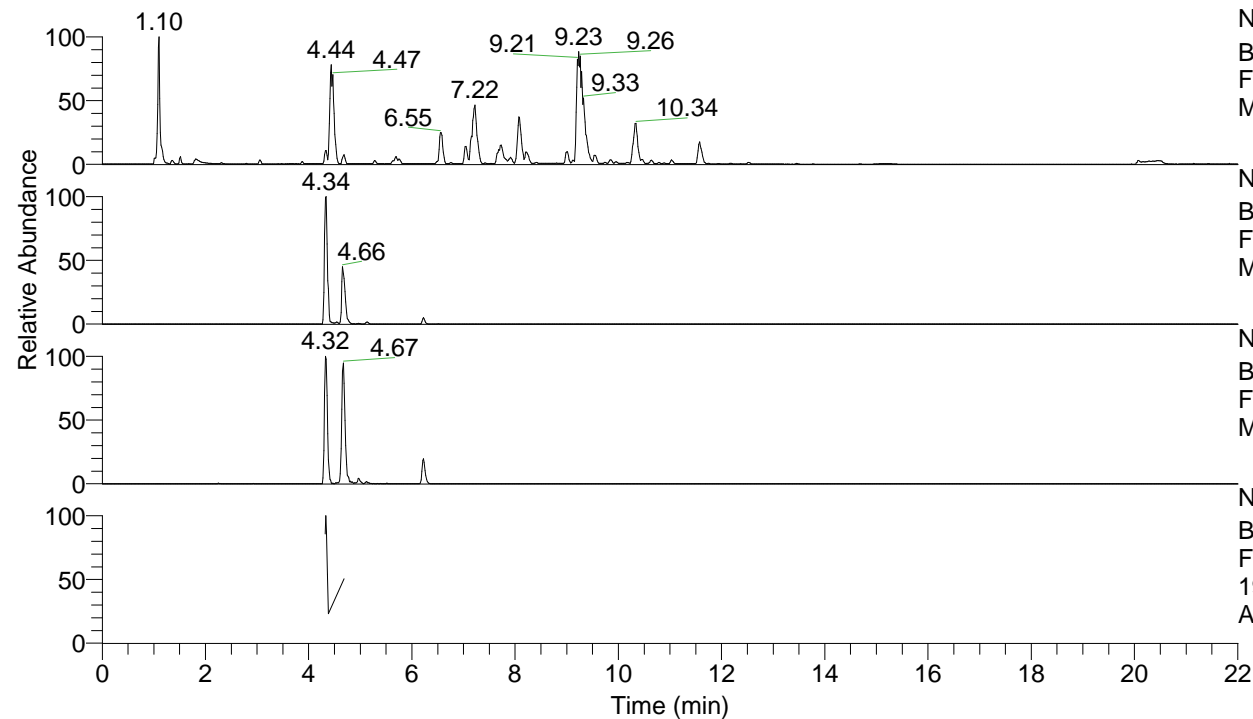


RT: 0.00 - 22.00



NL: 1.25E8
 Base Peak m/z= 100.00000-1500.00000 F:
 FTMS + p ESI Full ms [100.00-1500.00]
 MS Apotteri

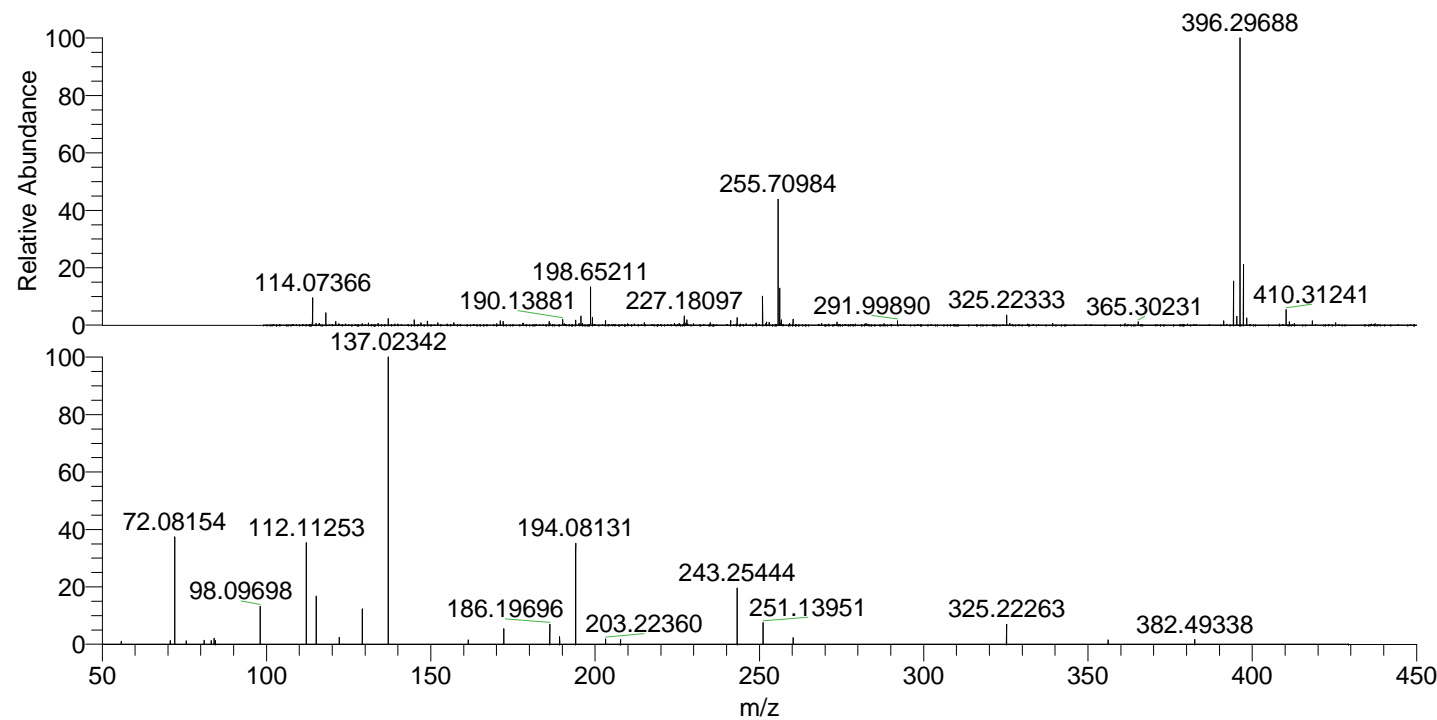
NL: 1.37E7
 Base Peak m/z= 396.29549-396.29945 F:
 FTMS + p ESI Full ms [100.00-1500.00]
 MS Apotteri

NL: 9.16E5
 Base Peak m/z= 198.65166-198.65364 F:
 FTMS + p ESI Full ms [100.00-1500.00]
 MS Apotteri

NL: 3.78E5
 Base Peak m/z= 50.00000-1500.00000 F:
 FTMS + p ESI d Full ms2
 198.65@hcd35.00 [50.00-425.00] MS
 Apotteri

Apotteri#1884 RT: 4.68
 F: FTMS + p ESI d Full ms2 198.65 ...
 m/z= 50.00000-1000.00000

m/z	Intensity	Relative
55.76305	2071.6	1.08
70.74093	2500.3	1.31
72.08154	72728.6	38.00
75.60201	2348.5	1.23
81.03438	2706.1	1.41
83.19578	2405.2	1.26
84.08124	3934.0	2.06
84.48336	2379.9	1.24
98.09698	25213.3	13.17
112.11253	70517.5	36.85
115.12325	33115.2	17.30
122.13115	4599.4	2.40
129.13858	23629.6	12.35
137.02342	191378.3	100.00
161.43126	2827.4	1.48
172.18109	11093.2	5.80
186.19696	13633.5	7.12
189.20732	5153.7	2.69
194.08131	69255.7	36.19
203.22360	3523.2	1.84
207.73151	2998.4	1.57
243.25444	37365.5	19.52
251.13951	14494.7	7.57
260.28052	4506.5	2.35
325.22263	13441.2	7.02
356.13620	2791.6	1.46
382.49338	3242.0	1.69



NL: 6.07E6
 Apotteri#1873 RT:
 4.66 AV: 1 T: FTMS +
 p ESI Full ms
 [100.00-1500.00]

NL: 1.91E5
 Apotteri#1870 RT:
 4.68 AV: 1 F: FTMS +
 p ESI d Full ms2
 198.65@hcd35.00
 [50.00-425.00]