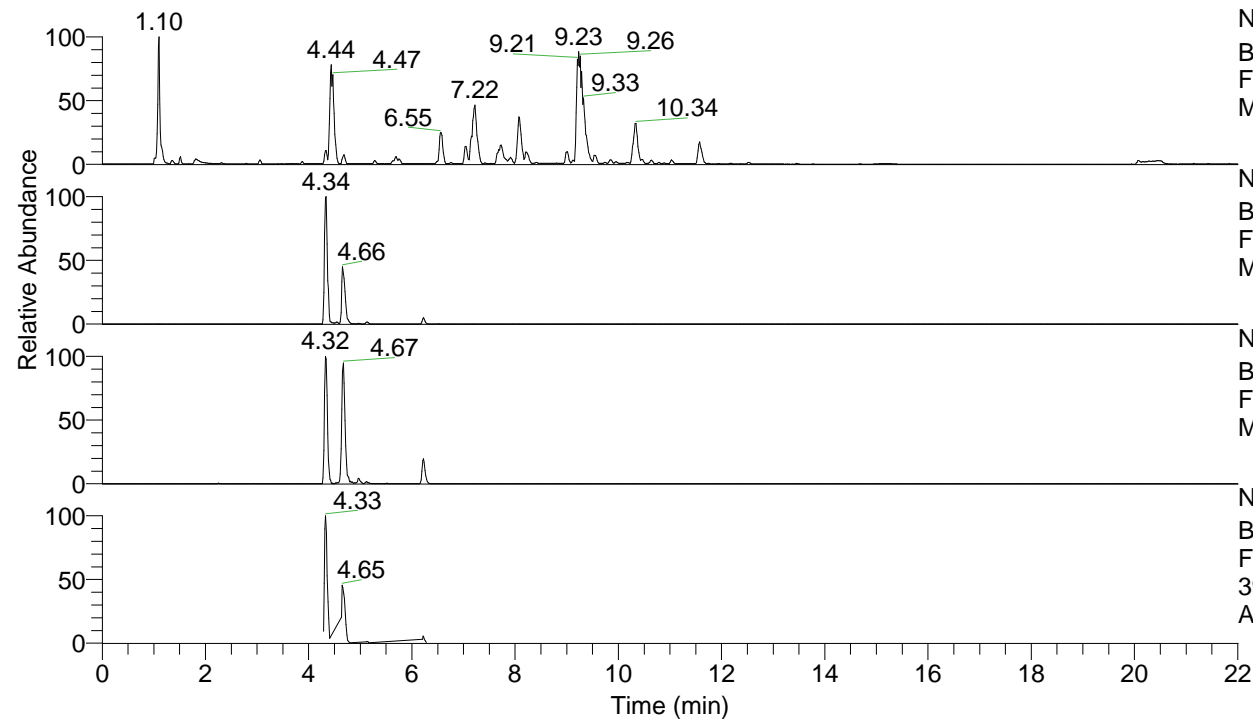


RT: 0.00 - 22.00



NL: 1.25E8
 Base Peak m/z= 100.00000-1500.00000 F:
 FTMS + p ESI Full ms [100.00-1500.00]
 MS Apotteri

NL: 1.37E7
 Base Peak m/z= 396.29549-396.29945 F:
 FTMS + p ESI Full ms [100.00-1500.00]
 MS Apotteri

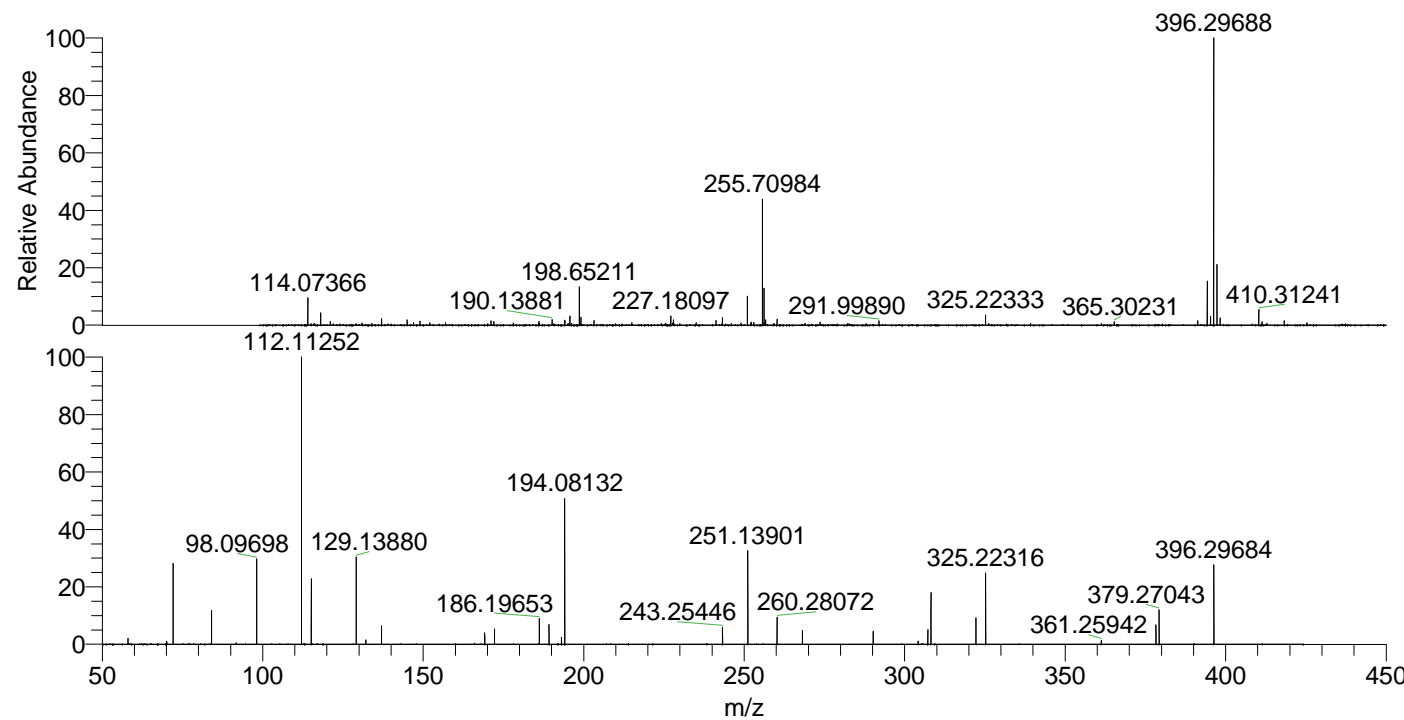
NL: 9.16E5
 Base Peak m/z= 198.65166-198.65364 F:
 FTMS + p ESI Full ms [100.00-1500.00]
 MS Apotteri

NL: 1.62E6
 Base Peak m/z= 50.00000-1500.00000 F:
 FTMS + p ESI d Full ms2
 396.30@hcd35.00 [50.00-420.00] MS
 Apotteri

Apotteri#1864-1893 RT: 4.64-4.71 AV: 6

F: FTMS + p ESI d Full ms2 396.30 ...
 m/z= 50.00000-1000.00000

m/z	Intensity	Relative
58.06596	10986.8	2.11
70.06593	5738.7	1.10
72.08159	148013.7	28.41
84.08144	61603.2	11.82
91.75212	2612.5	0.50
98.09698	157738.1	30.27
112.11252	521072.4	100.00
115.12339	118866.4	22.81
129.13880	163867.6	31.45
132.14972	7882.0	1.51
137.02329	33431.1	6.42
169.17018	20949.2	4.02
172.18094	27955.8	5.37
186.19653	46698.6	8.96
189.20757	35977.4	6.90
193.09754	12404.5	2.38
194.08132	263847.1	50.64
243.25446	31256.9	6.00
251.13901	169242.6	32.48
260.28072	49308.3	9.46
268.16577	25307.3	4.86
290.18615	23555.2	4.52
304.20175	5656.2	1.09
307.21291	26912.9	5.16
308.19681	96619.0	18.54
322.21251	48754.2	9.36
325.22316	130320.4	25.01
361.25942	7246.3	1.39
378.28656	35280.0	6.77
379.27043	62597.0	12.01
396.29684	144219.2	27.68



NL: 6.07E6
 Apotteri#1873 RT: 4.66
 AV: 1 T: FTMS + p ESI
 Full ms [100.00-1500.00]

NL: 5.19E5
 Apotteri#1861-1895 RT:
 4.64-4.71 AV: 6 F: FTMS
 + p ESI d Full ms2
 396.30@hcd35.00
 [50.00-420.00]