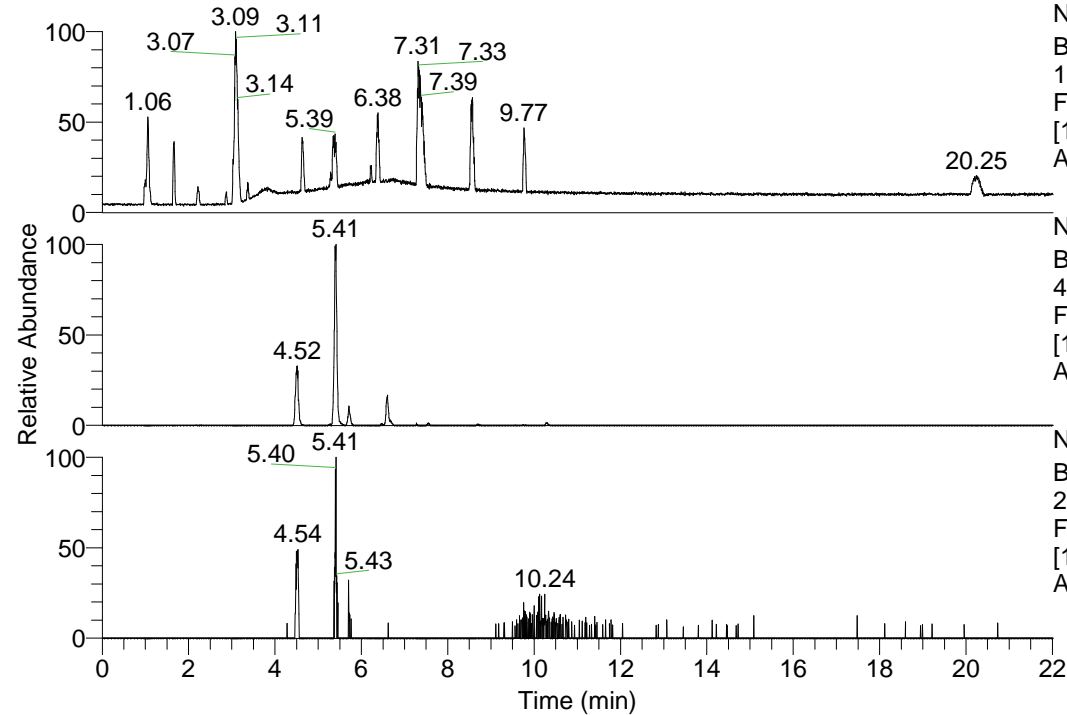


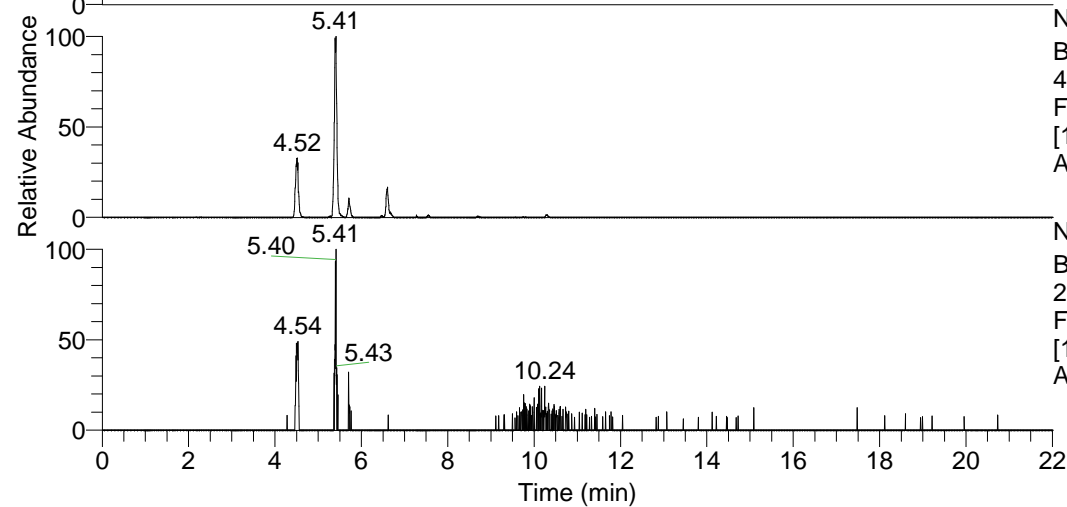
RT: 0.00 - 22.01



NL: 1.69E8
 Base Peak m/z=
 100.00000-1500.00000 F:
 FTMS + p ESI Full ms
 [100.00-1500.00] MS
 Apotteri_HDX

Apotteri_HDX#856 RT: 5.41
 T: FTMS + p ESI Full ms [100.00-1500.00]
 m/z= 400.00000-401.00000

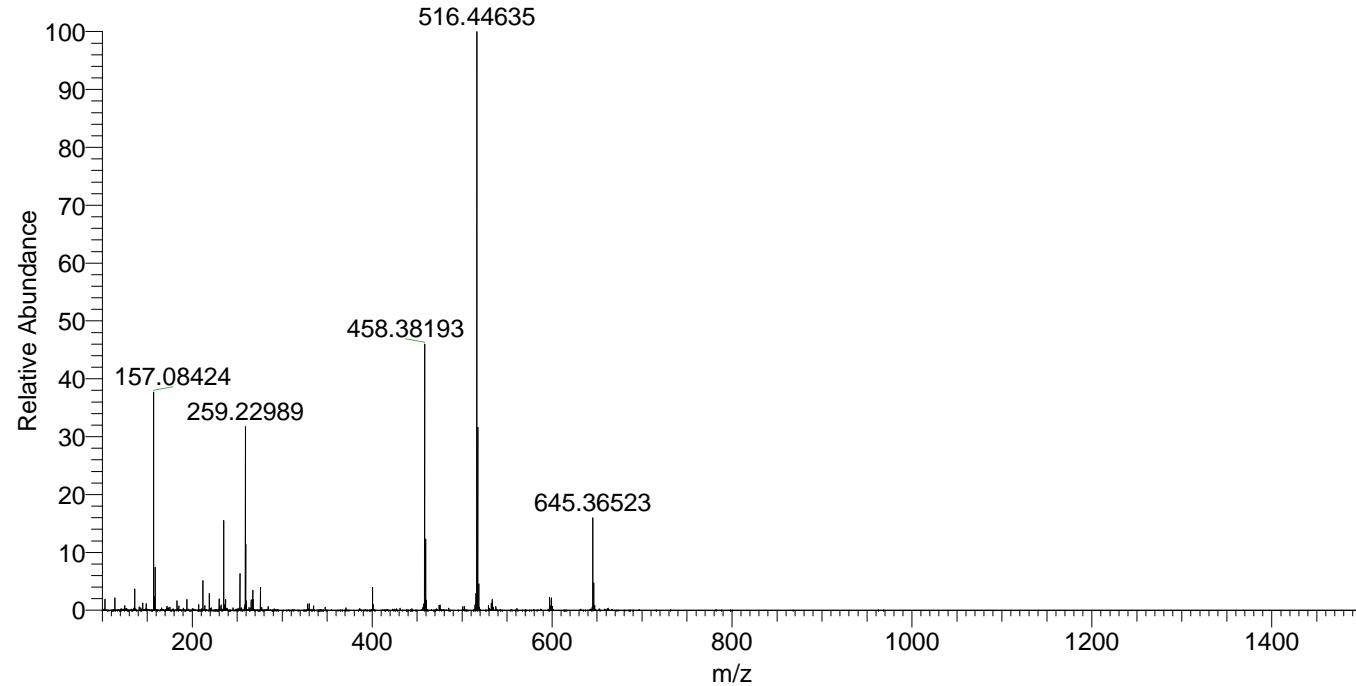
m/z	Intensity	Relative	Delta (ppm)	Composition
400.31754	2618959.8	100.00	0.39	C ₂₀ H ₂₈ ² H ₇ O ₃ N ₅
			-3.48	C ₂₀ H ₃₀ ² H ₆ O ₃ N ₅
			4.26	C ₂₀ H ₂₆ ² H ₈ O ₃ N ₅



NL: 2.62E6
 Base Peak m/z=
 400.31438-400.31838 F:
 FTMS + p ESI Full ms
 [100.00-1500.00] MS
 Apotteri_HDX

NL: 4.16E4
 Base Peak m/z=
 201.16423-201.16625 F:
 FTMS + p ESI Full ms
 [100.00-1500.00] MS
 Apotteri_HDX

Apotteri_HDX #856 RT: 5.41 AV: 1 NL: 6.46E7
 T: FTMS + p ESI Full ms [100.00-1500.00]



Apotteri_HDX #856 RT: 5.41 AV: 1 NL: 2.54E6
 T: FTMS + p ESI Full ms [100.00-1500.00]

