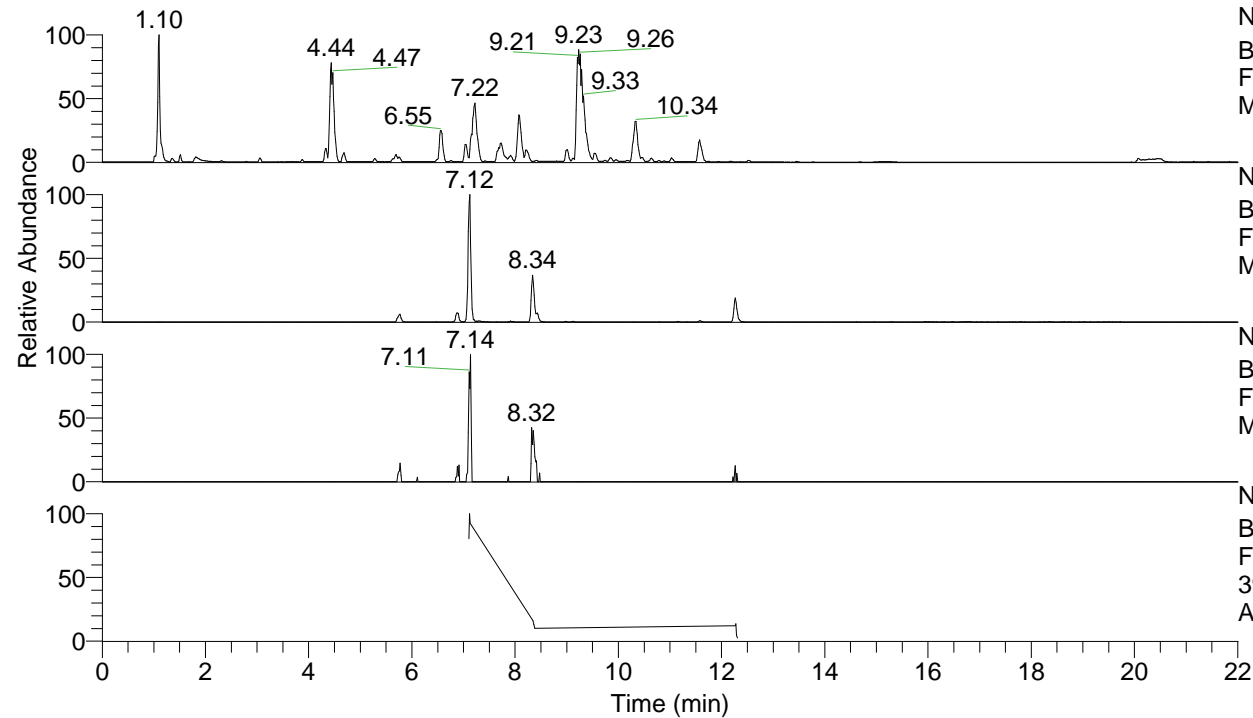


RT: 0.00 - 22.00



NL: 1.25E8  
 Base Peak m/z= 100.00000-1500.00000 F:  
 FTMS + p ESI Full ms [100.00-1500.00]  
 MS Apotteri

NL: 1.34E6  
 Base Peak m/z= 392.26420-392.26812 F:  
 FTMS + p ESI Full ms [100.00-1500.00]  
 MS Apotteri

NL: 2.97E4  
 Base Peak m/z= 196.63602-196.63798 F:  
 FTMS + p ESI Full ms [100.00-1500.00]  
 MS Apotteri

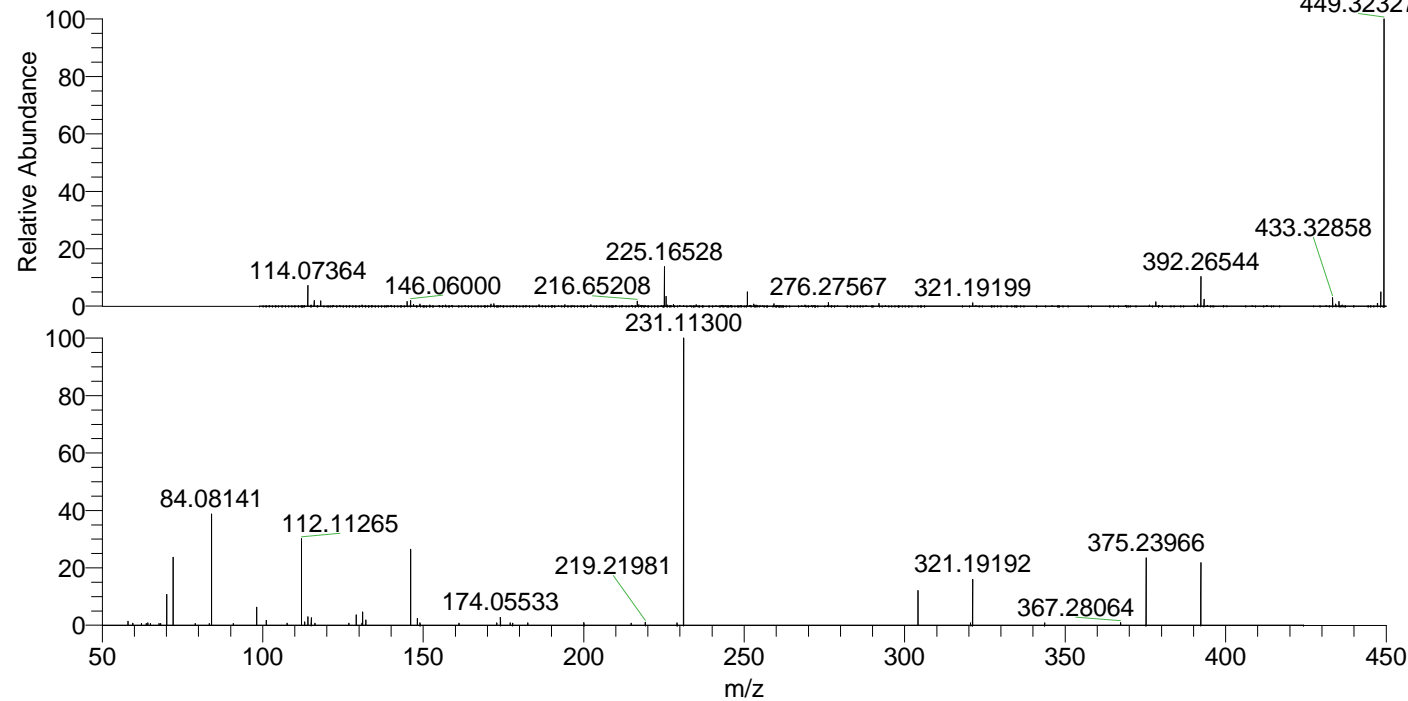
NL: 1.85E5  
 Base Peak m/z= 50.00000-1500.00000 F:  
 FTMS + p ESI d Full ms2  
 392.27@hcd35.00 [50.00-420.00] MS  
 Apotteri

Apotteri#2848-2859 RT: 7.10-7.13 AV: 3

F: FTMS + p ESI d Full ms2 392.27 ...

m/z= 50.00000-1000.00000

m/z	Intensity	Relative
58.06594	2210.4	1.35
59.52661	1120.0	0.68
62.21787	1046.6	0.64
63.72619	1019.3	0.62
64.24350	1394.0	0.85
65.00029	995.2	0.61
67.69537	1013.3	0.62
68.23584	1050.2	0.64
70.06588	17615.5	10.76
72.08159	39145.7	23.91
78.99767	1102.8	0.67
83.35737	1067.0	0.65
84.08141	63585.1	38.84
90.84084	1055.8	0.64
98.09702	10463.0	6.39
101.10781	2855.3	1.74
107.63523	1226.3	0.75
112.11265	49323.7	30.13
113.10770	1907.4	1.17
114.09214	4831.8	2.95
115.12325	4354.1	2.66
116.28022	1259.4	0.77
126.86526	1166.3	0.71
129.13874	5946.2	3.63
130.91077	1139.5	0.70
131.11816	7528.8	4.60
132.15032	3064.1	1.87
146.06004	44928.8	27.45
148.14437	3843.4	2.35
149.02331	1394.8	0.85
161.13936	1233.8	0.75
172.90448	1411.4	0.86
174.05533	4452.8	2.72
177.11210	1314.4	0.80
177.85292	1287.2	0.79
182.60437	1372.3	0.84
200.08101	1588.6	0.97
214.76685	1166.6	0.71
219.21981	1763.2	1.08
229.09719	1358.3	0.83
231.11300	163697.8	100.00
304.16579	19731.4	12.05
320.53003	1457.0	0.89
321.19192	26475.2	16.17
343.61719	1377.4	0.84
367.28064	1564.8	0.96
375.23966	38651.8	23.61
392.26558	35551.0	21.72



449.32327 NL: 1.22E7  
 Apotteri#2857 RT: 7.12  
 AV: 1 T: FTMS + p ESI  
 Full ms [100.00-1500.00]

NL: 1.63E5  
 Apotteri#2845-2863 RT:  
 7.10-7.13 AV: 3 F: FTMS  
 + p ESI d Full ms2  
 392.27@hcd35.00  
 [50.00-420.00]