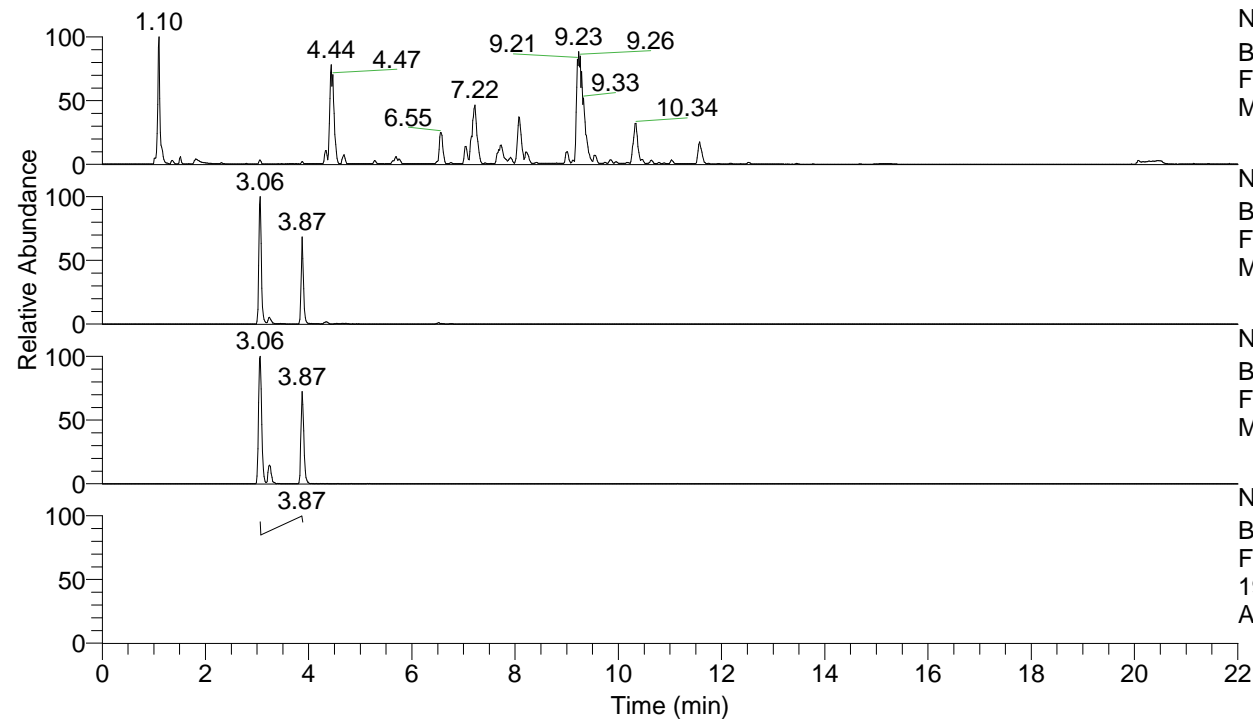


RT: 0.00 - 22.00



NL: 1.25E8
 Base Peak m/z= 100.00000-1500.00000 F:
 FTMS + p ESI Full ms [100.00-1500.00]
 MS Apotteri

NL: 4.39E6
 Base Peak m/z= 380.30065-380.30445 F:
 FTMS + p ESI Full ms [100.00-1500.00]
 MS Apotteri

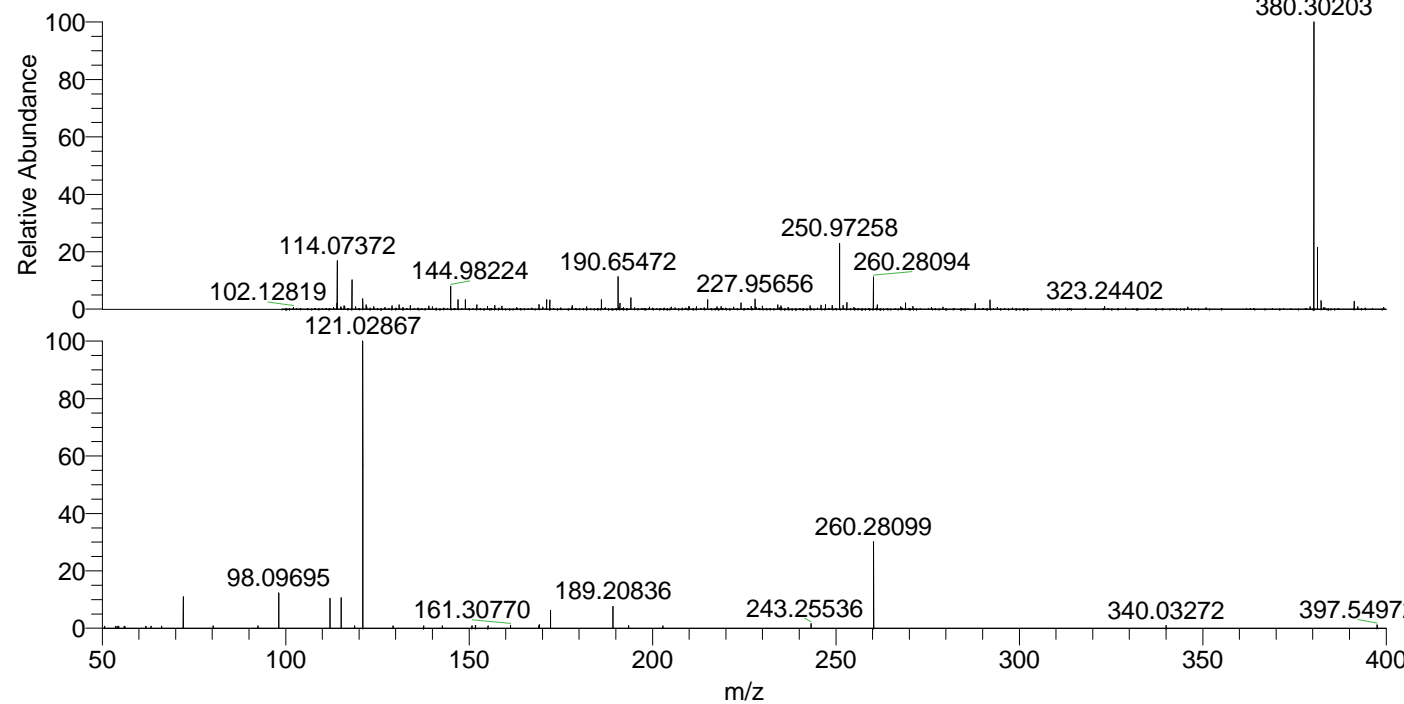
NL: 4.77E5
 Base Peak m/z= 190.65424-190.65614 F:
 FTMS + p ESI Full ms [100.00-1500.00]
 MS Apotteri

NL: 1.64E5
 Base Peak m/z= 50.00000-1500.00000 F:
 FTMS + p ESI d Full ms2
 190.65@hcd35.00 [50.00-405.00] MS
 Apotteri

Apotteri#1554-1559 RT: 3.87-3.88 AV: 2

F: FTMS + p ESI d Full ms2 190.65 ...
 m/z= 50.00000-1000.00000

m/z	Intensity	Relative
50.69582	1092.9	0.71
53.63334	958.6	0.62
54.09801	1037.1	0.67
54.48772	1066.7	0.69
55.98857	965.2	0.63
56.15312	1167.5	0.76
61.87264	1126.5	0.73
63.26735	1139.9	0.74
66.15673	1148.4	0.74
72.08150	17418.1	11.28
80.26098	1247.4	0.81
92.48828	1250.8	0.81
98.09695	19490.7	12.62
112.11280	15940.9	10.32
115.12359	16351.1	10.59
118.77931	1332.7	0.86
121.02867	154409.7	100.00
129.24864	1218.7	0.79
137.61254	1307.3	0.85
142.71254	1392.2	0.90
150.78652	1295.0	0.84
151.74534	1491.0	0.97
155.15266	1262.8	0.82
161.30770	1559.6	1.01
169.05171	1239.8	0.80
169.17015	1933.8	1.25
172.18141	9530.6	6.17
189.20836	12211.9	7.91
193.48487	1500.4	0.97
202.84007	1230.0	0.80
243.25536	2538.5	1.64
260.28099	46157.1	29.89
340.03272	1454.7	0.94
397.54972	1785.8	1.16



NL: 2.95E6
 Apotteri#1555 RT: 3.87
 AV: 1 T: FTMS + p ESI
 Full ms [100.00-1500.00]

NL: 1.53E5
 Apotteri#1538-1582 RT:
 3.87-3.88 AV: 2 F: FTMS
 + p ESI d Full ms2
 190.65@hcd35.00
 [50.00-405.00]