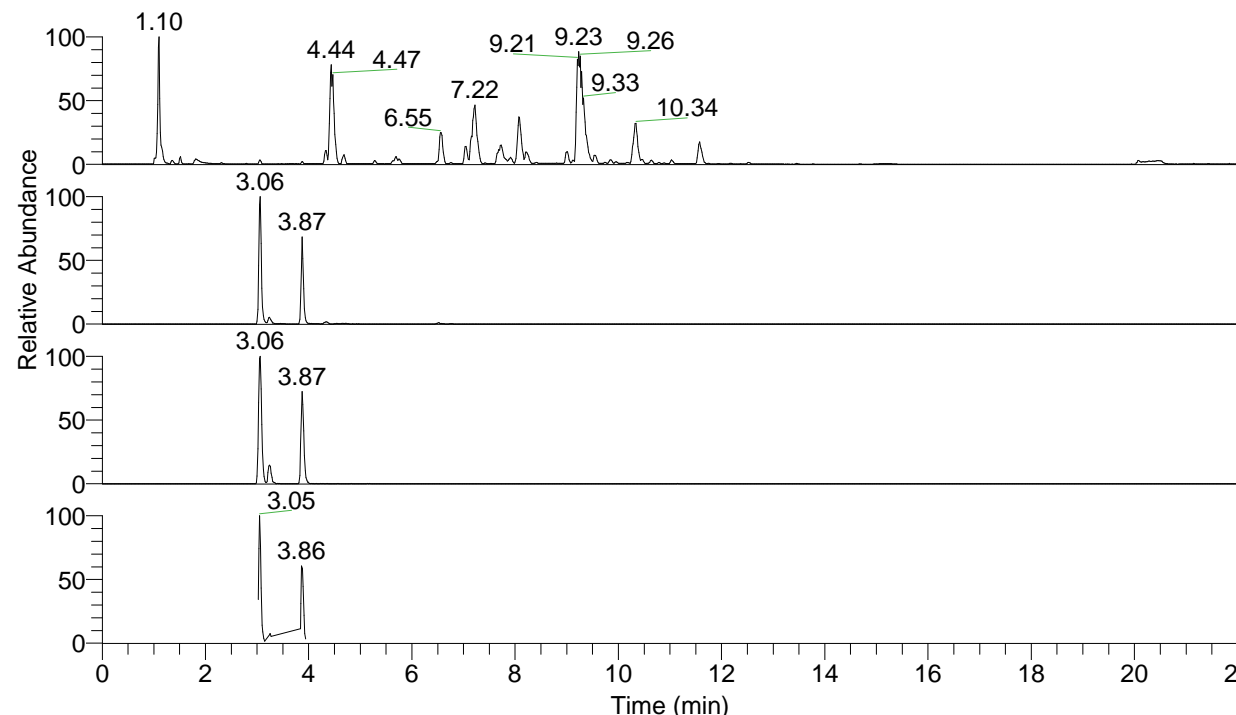


RT: 0.00 - 22.00



NL: 1.25E8
 Base Peak m/z= 100.00000-1500.00000 F:
 FTMS + p ESI Full ms [100.00-1500.00]
 MS Apotteri

NL: 4.39E6
 Base Peak m/z= 380.30065-380.30445 F:
 FTMS + p ESI Full ms [100.00-1500.00]
 MS Apotteri

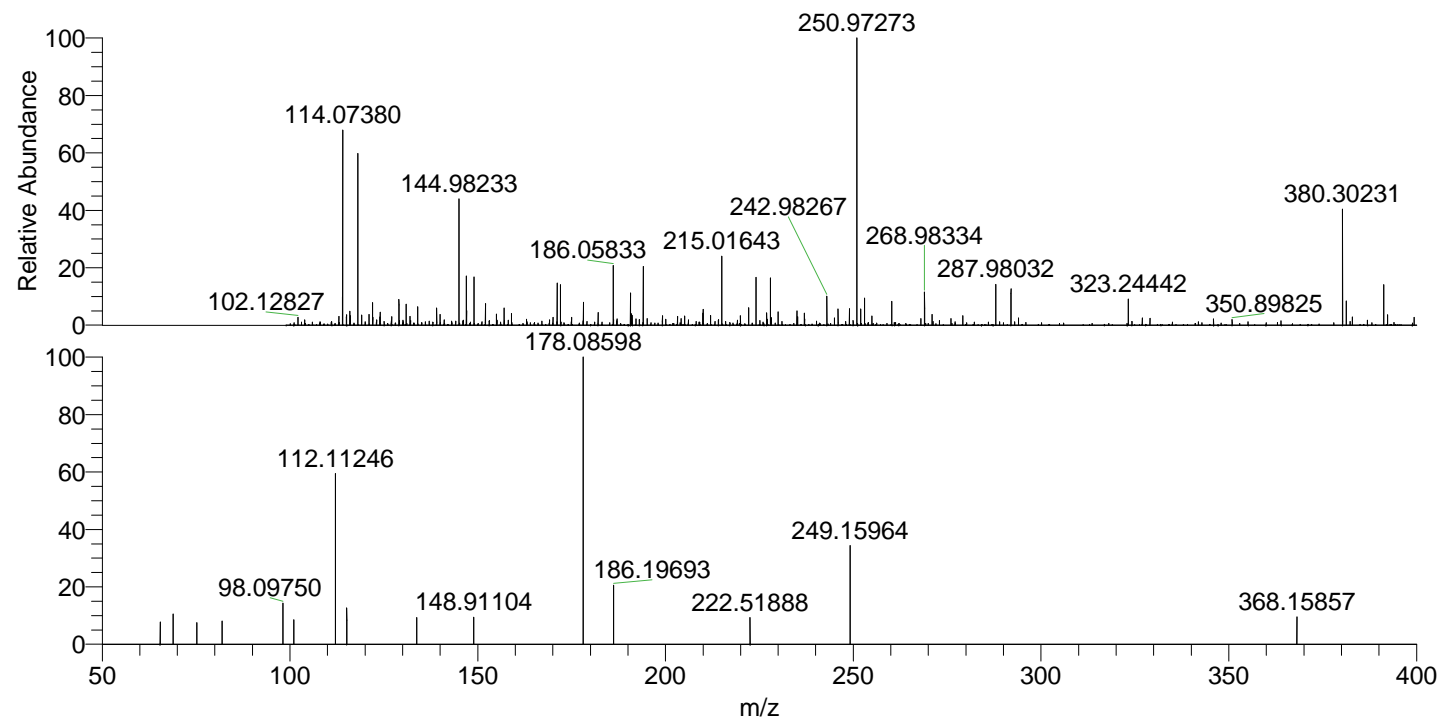
NL: 4.77E5
 Base Peak m/z= 190.65424-190.65614 F:
 FTMS + p ESI Full ms [100.00-1500.00]
 MS Apotteri

NL: 5.32E5
 Base Peak m/z= 50.00000-1500.00000 F:
 FTMS + p ESI d Full ms2
 380.30@hcd35.00 [50.00-405.00] MS
 Apotteri

Apotteri#1308 RT: 3.25
 F: FTMS + p ESI d Full ms2 380.30 ...

m/z= 50.00000-1000.00000

m/z	Intensity	Relative
65.43092	3156.4	7.63
68.87041	4405.4	10.65
75.21046	3058.8	7.39
81.94226	3338.9	8.07
98.09750	6041.5	14.60
101.04688	3491.9	8.44
112.11246	25069.9	60.60
115.12353	5449.6	13.17
133.74268	3855.2	9.32
148.91104	3885.3	9.39
178.08598	41367.7	100.00
186.19693	8528.6	20.62
222.51888	3808.6	9.21
249.15964	14598.2	35.29
368.15857	3903.2	9.44



NL: 5.92E5
 Apotteri#1303 RT:
 3.24 AV: 1 T: FTMS +
 p ESI Full ms
 [100.00-1500.00]

NL: 4.08E4
 Apotteri#1308 RT:
 3.25 AV: 1 F: FTMS +
 p ESI d Full ms2
 380.30@hcd35.00
 [50.00-405.00]