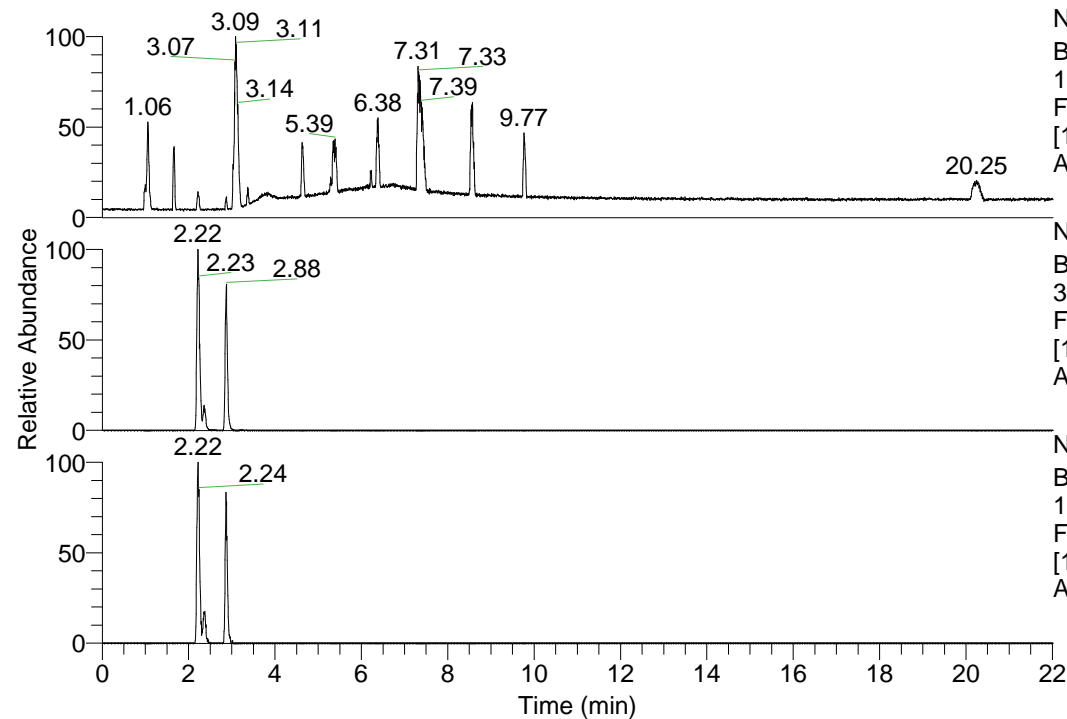


RT: 0.00 - 22.01



NL: 1.69E8
 Base Peak m/z=
 100.00000-1500.00000 F:
 FTMS + p ESI Full ms
 [100.00-1500.00] MS
 Apotteri_HDX

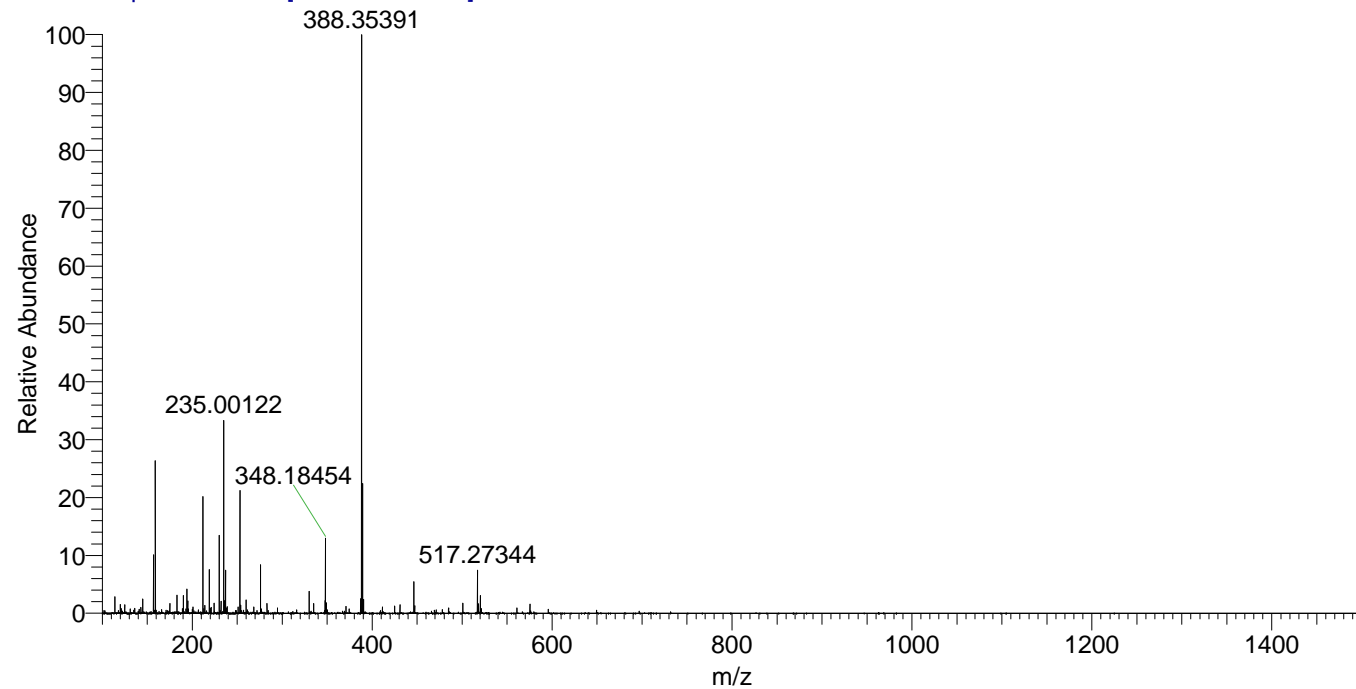
Apotteri_HDX#339 RT: 2.22
 T: FTMS + p ESI Full ms [100.00-1500.00]
 m/z= 388.00000-389.00000

m/z	Intensity	Relative	Delta (ppm)	Composition
388.35391	23873018.0	100.00	0.38	C ₂₀ H ₃₂ ² H ₇ O ₂ N ₅
			-3.61	C ₂₀ H ₃₄ ² H ₆ O ₂ N ₅
			4.37	C ₂₀ H ₃₀ ² H ₈ O ₂ N ₅

NL: 2.39E7
 Base Peak m/z=
 388.35083-388.35471 F:
 FTMS + p ESI Full ms
 [100.00-1500.00] MS
 Apotteri_HDX

NL: 4.83E5
 Base Peak m/z=
 195.18245-195.18441 F:
 FTMS + p ESI Full ms
 [100.00-1500.00] MS
 Apotteri_HDX

Apotteri_HDX #339 RT: 2.22 AV: 1 NL: 2.24E7
 T: FTMS + p ESI Full ms [100.00-1500.00]



Apotteri_HDX #339 RT: 2.22 AV: 1 NL: 2.24E7
 T: FTMS + p ESI Full ms [100.00-1500.00]

