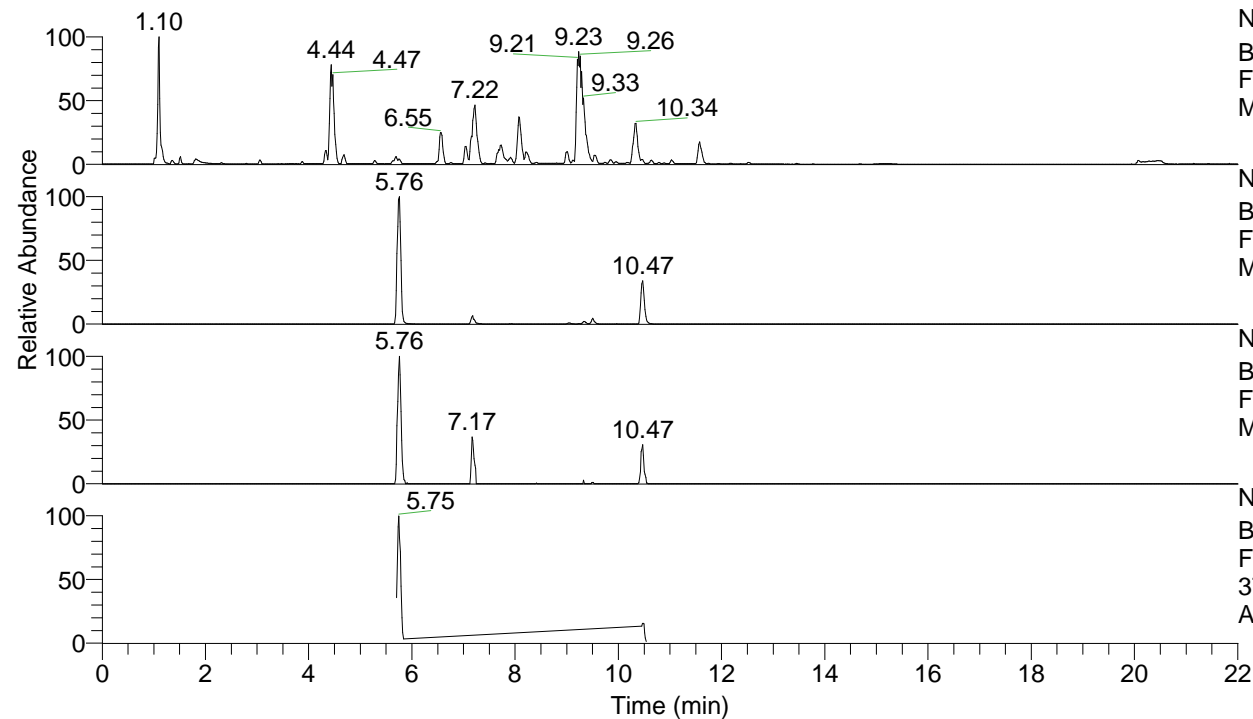


RT: 0.00 - 22.00



Apotteri#2290-4227 RT: 5.70-10.51 AV:

F: FTMS + p ESI d Full ms2 376.27 ...

m/z= 50.00000-1000.00000

m/z	Intensity	Relative
58.06604	7095.4	2.15
70.06594	21534.6	6.51
72.08160	31565.7	9.55
84.08148	23938.0	7.24
98.09701	17858.2	5.40
112.11254	173676.3	52.52
114.09201	4091.7	1.24
115.12347	24300.9	7.35
128.10740	6826.0	2.06
129.13888	132854.2	40.17
130.06525	13961.1	4.22
131.11841	3303.3	1.00
132.14978	4295.3	1.30
146.06019	34383.7	10.40
148.14478	2057.8	0.62
174.05514	7126.9	2.16
175.08680	2858.9	0.86
186.19703	1853.0	0.56
203.08133	4610.3	1.39
203.22340	3166.1	0.96
229.13362	19996.1	6.05
230.12904	4205.4	1.27
231.11286	330694.1	100.00
272.17646	5905.0	1.79
286.19229	3813.1	1.15
287.18653	6538.5	1.98
288.17080	32482.6	9.82
302.18620	78332.5	23.69
305.19728	43466.6	13.14
341.23383	17417.3	5.27
358.26029	27891.1	8.43
359.24436	28639.9	8.66
376.27059	81002.0	24.49

