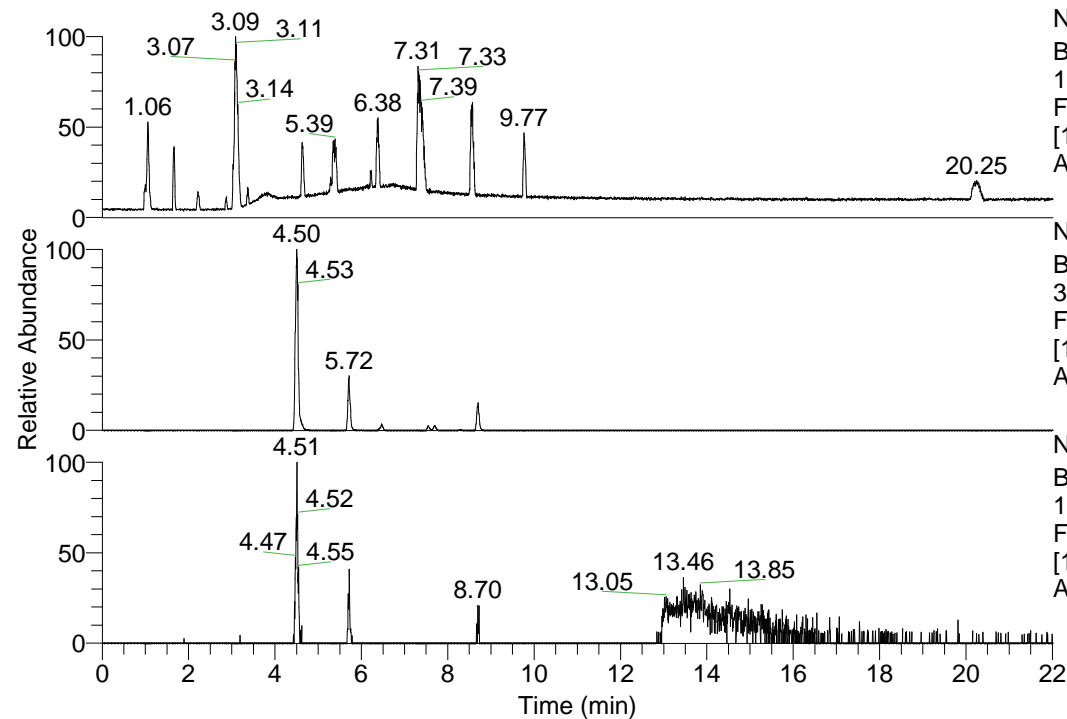


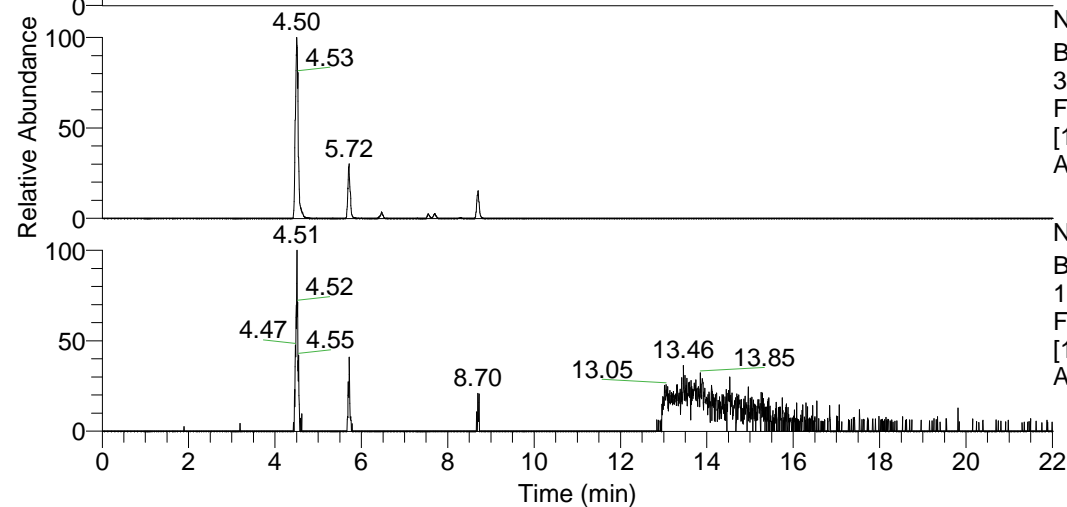
RT: 0.00 - 22.01



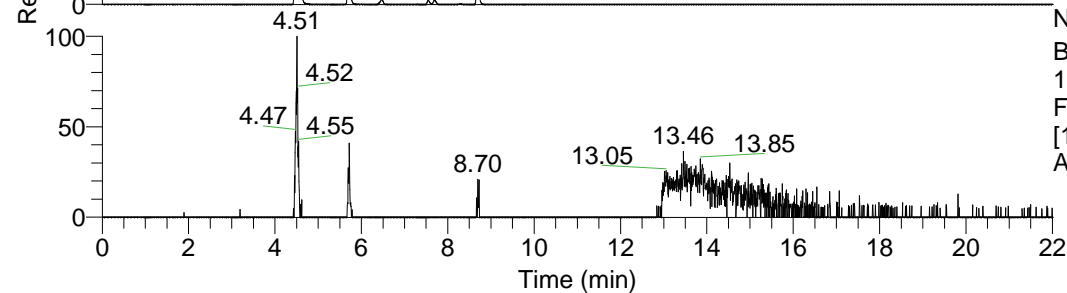
NL: 1.69E8  
 Base Peak m/z=  
 100.00000-1500.00000 F:  
 FTMS + p ESI Full ms  
 [100.00-1500.00] MS  
 Apotteri\_HDX

Apotteri\_HDX#704 RT: 4.50  
 T: FTMS + p ESI Full ms [100.00-1500.00]  
 m/z= 384.00000-385.00000

m/z	Intensity	Relative	Delta (ppm)	Composition
384.32260	4674020.0	100.00	0.36	C <sub>20</sub> H <sub>28</sub> <sup>2</sup> H <sub>7</sub> O <sub>2</sub> N <sub>5</sub>
			-3.67	C <sub>20</sub> H <sub>30</sub> <sup>2</sup> H <sub>6</sub> O <sub>2</sub> N <sub>5</sub>
			4.39	C <sub>20</sub> H <sub>26</sub> <sup>2</sup> H <sub>8</sub> O <sub>2</sub> N <sub>5</sub>

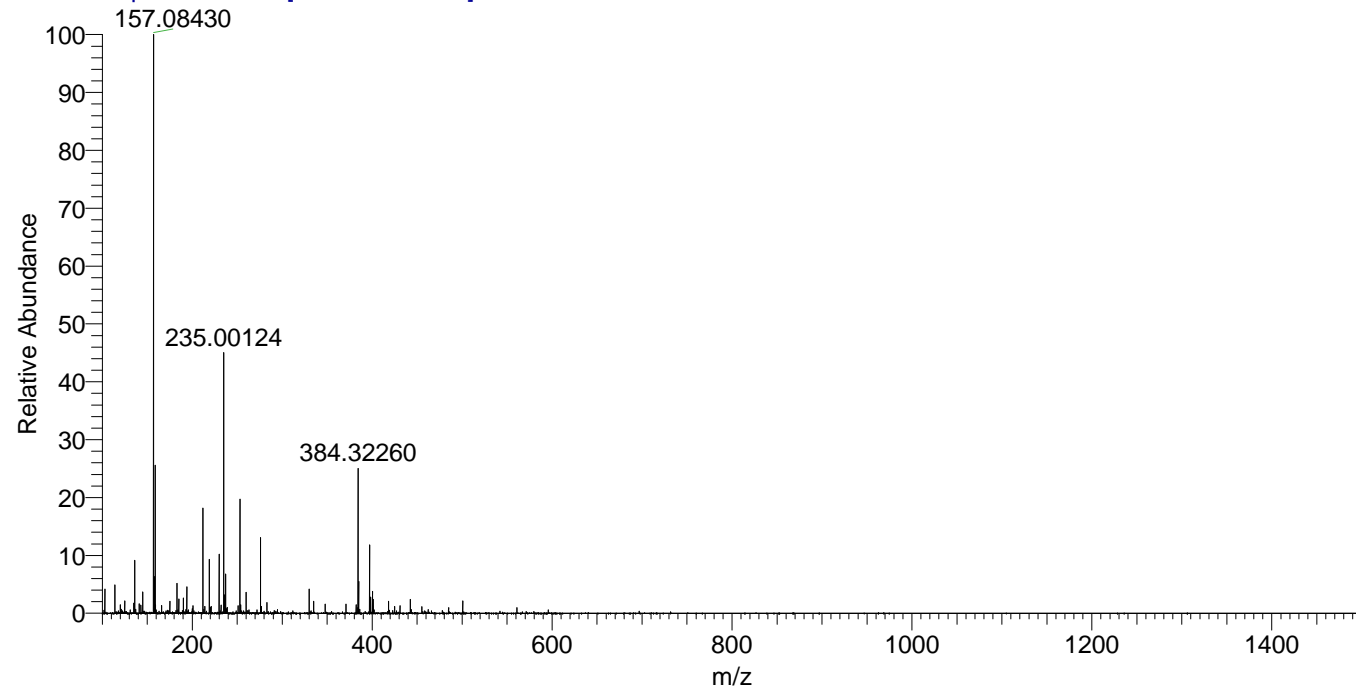


NL: 5.19E6  
 Base Peak m/z=  
 384.31955-384.32339 F:  
 FTMS + p ESI Full ms  
 [100.00-1500.00] MS  
 Apotteri\_HDX



NL: 7.99E4  
 Base Peak m/z=  
 193.16681-193.16875 F:  
 FTMS + p ESI Full ms  
 [100.00-1500.00] MS  
 Apotteri\_HDX

Apotteri\_HDX #704 RT: 4.50 AV: 1 NL: 1.86E7  
 T: FTMS + p ESI Full ms [100.00-1500.00]



Apotteri\_HDX #704 RT: 4.50 AV: 1 NL: 4.67E6  
 T: FTMS + p ESI Full ms [100.00-1500.00]

