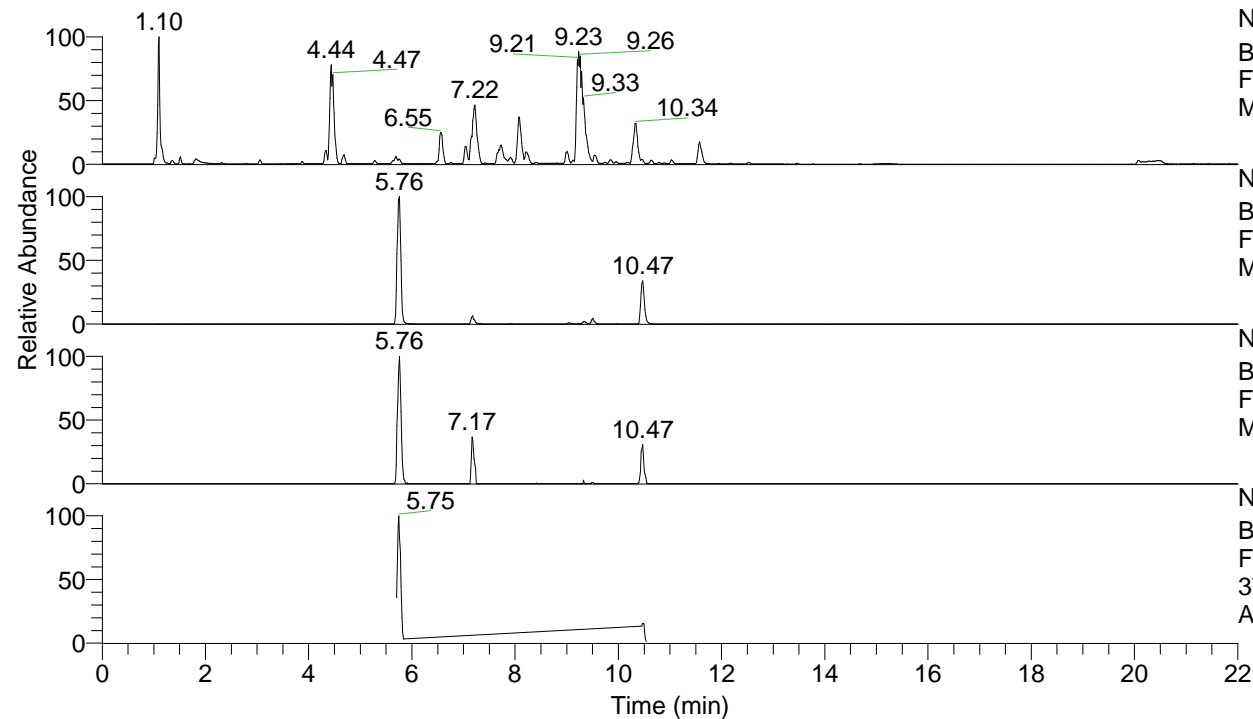


RT: 0.00 - 22.00



NL: 1.25E8
 Base Peak m/z= 100.00000-1500.00000 F:
 FTMS + p ESI Full ms [100.00-1500.00]
 MS Apotteri

NL: 5.28E6
 Base Peak m/z= 376.26937-376.27313 F:
 FTMS + p ESI Full ms [100.00-1500.00]
 MS Apotteri

NL: 1.64E5
 Base Peak m/z= 188.63860-188.64048 F:
 FTMS + p ESI Full ms [100.00-1500.00]
 MS Apotteri

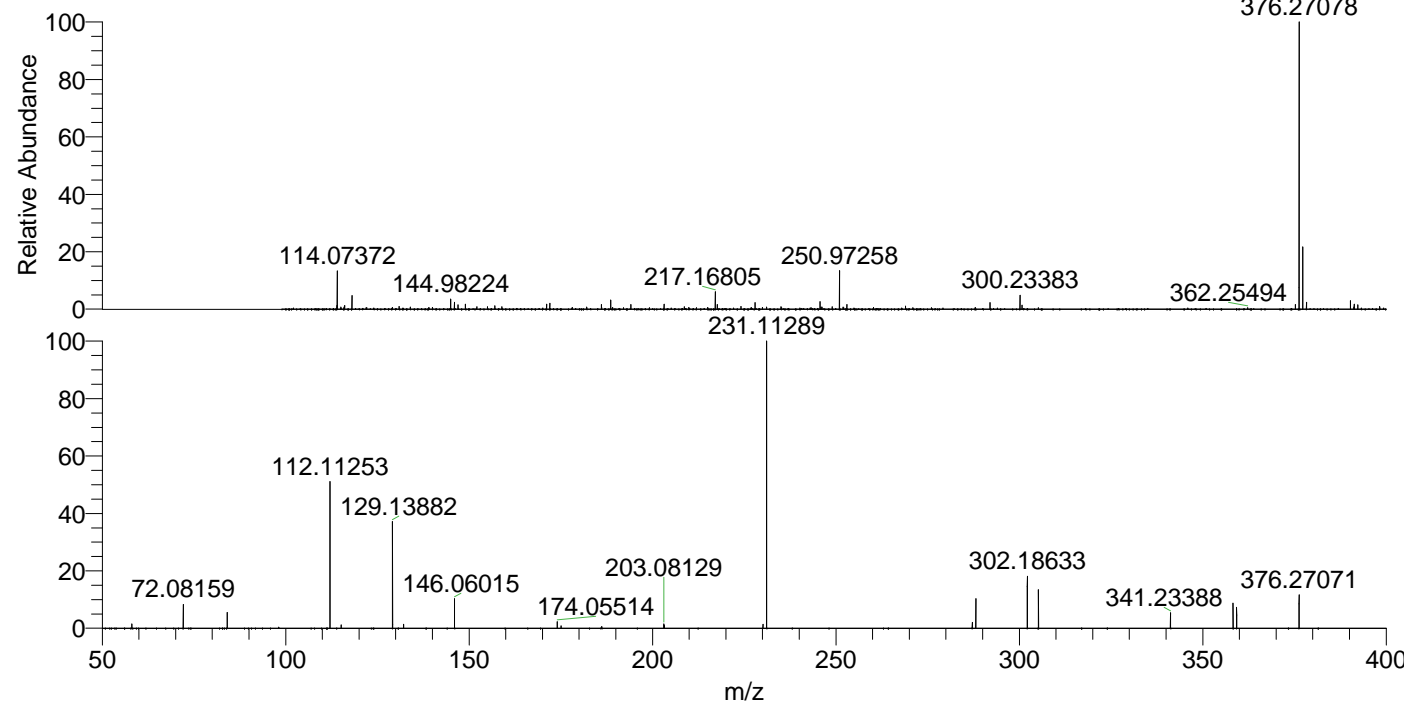
NL: 9.97E5
 Base Peak m/z= 50.00000-1500.00000 F:
 FTMS + p ESI d Full ms2
 376.27@hcd35.00 [50.00-400.00] MS
 Apotteri

Apotteri#2290-2324 RT: 5.70-5.79 AV: 7

F: FTMS + p ESI d Full ms2 376.27 ...

m/z= 50.00000-1000.00000

m/z	Intensity	Relative
58.06603	10248.9	1.52
72.08159	57080.8	8.48
84.08143	37561.8	5.58
112.11253	345862.5	51.40
115.12345	7914.6	1.18
129.13882	258496.4	38.42
132.14978	9290.4	1.38
146.06015	70610.8	10.49
174.05514	15381.9	2.29
175.08672	6161.1	0.92
186.19703	3992.1	0.59
203.08129	10040.6	1.49
203.22340	6816.3	1.01
230.12905	9071.3	1.35
231.11289	672843.7	100.00
287.18660	14146.8	2.10
288.17081	70221.7	10.44
302.18633	121460.5	18.05
305.19730	91543.9	13.61
341.23388	36935.4	5.49
358.26036	59542.9	8.85
359.24421	50692.5	7.53
376.27071	78500.1	11.67



NL: 5.07E6
 Apotteri#2311 RT: 5.76
 AV: 1 T: FTMS + p ESI
 Full ms [100.00-1500.00]

NL: 6.72E5
 Apotteri#2289-2326 RT:
 5.70-5.79 AV: 7 F: FTMS
 + p ESI d Full ms2
 376.27@hcd35.00
 [50.00-400.00]