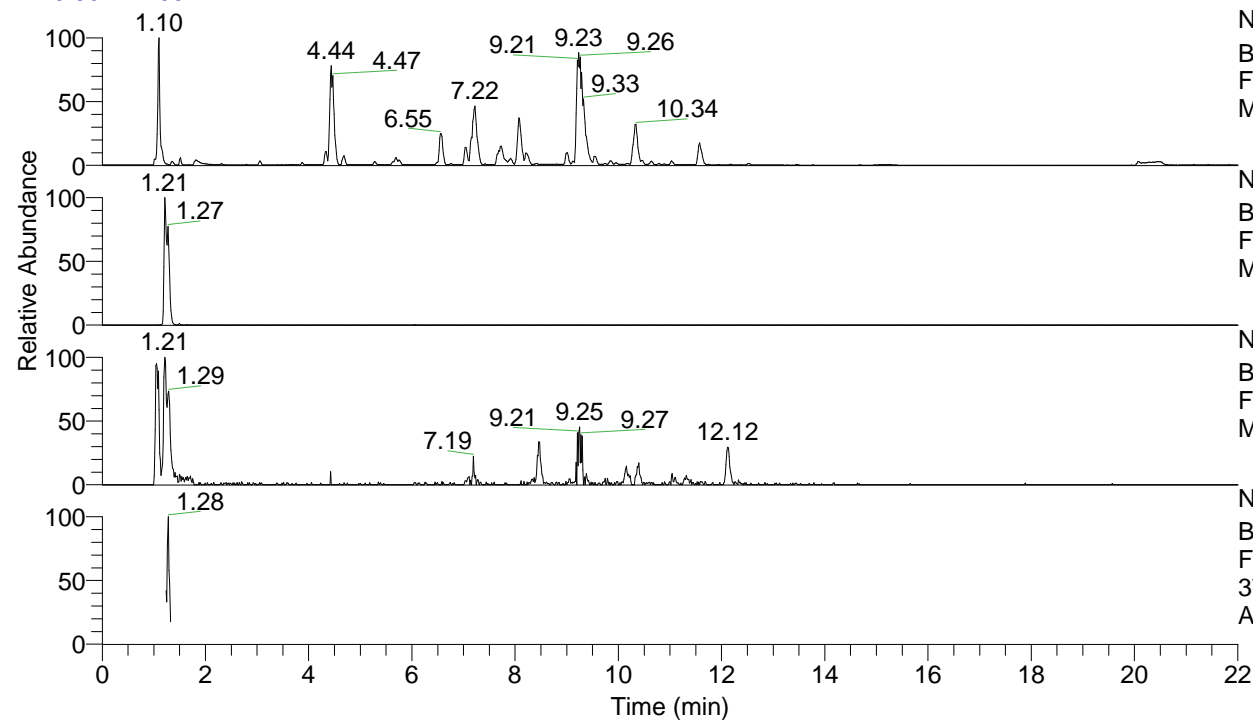


RT: 0.00 - 22.00



NL: 1.25E8
 Base Peak m/z= 100.00000-1500.00000 F:
 FTMS + p ESI Full ms [100.00-1500.00]
 MS Apotteri

NL: 1.14E6
 Base Peak m/z= 375.34287-375.34663 F:
 FTMS + p ESI Full ms [100.00-1500.00]
 MS Apotteri

NL: 8.98E4
 Base Peak m/z= 188.17535-188.17723 F:
 FTMS + p ESI Full ms [100.00-1500.00]
 MS Apotteri

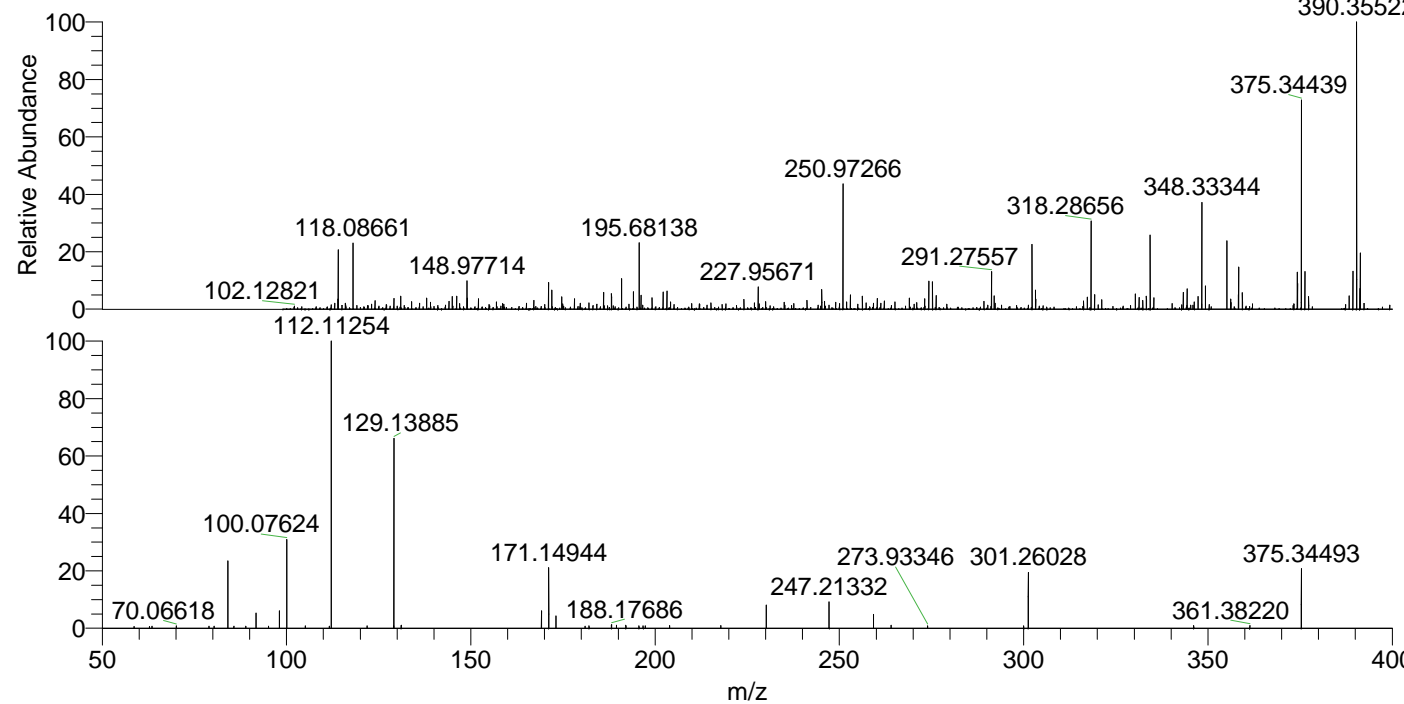
NL: 1.74E5
 Base Peak m/z= 50.00000-1500.00000 F:
 FTMS + p ESI d Full ms2
 375.34@hcd35.00 [50.00-400.00] MS
 Apotteri

Apotteri#513-525 RT: 1.26-1.29 AV: 3

F: FTMS + p ESI d Full ms2 375.34 ...

m/z= 50.00000-1000.00000

m/z	Intensity	Relative
63.49987	1149.2	0.89
78.95789	1001.9	0.78
84.08141	27177.3	21.15
85.69924	1012.7	0.79
88.94644	1033.6	0.80
91.75196	1729.1	1.35
91.75667	5186.3	4.04
98.09719	7299.7	5.68
100.07626	27150.1	21.13
112.11252	128495.2	100.00
121.85526	1343.9	1.05
129.13881	91314.9	71.06
169.17018	7620.6	5.93
171.14947	15270.1	11.88
173.12878	6332.9	4.93
181.00822	1092.1	0.85
182.09206	1202.4	0.94
189.51684	1599.6	1.24
192.07995	1526.2	1.19
196.76194	1226.3	0.95
197.34975	1246.2	0.97
217.83254	1414.3	1.10
230.18678	12272.8	9.55
247.21341	13886.3	10.81
259.24946	2433.7	1.89
264.03841	1520.2	1.18
273.93354	1320.7	1.03
300.01165	1292.3	1.01
301.26028	28668.3	22.31
346.14078	1340.9	1.04
361.38231	1367.6	1.06
375.34503	22703.5	17.67



NL: 1.18E6
 Apotteri#517 RT: 1.27
 AV: 1 T: FTMS + p ESI
 Full ms [100.00-1500.00]

NL: 1.10E5
 Apotteri#508-528 RT:
 1.25-1.29 AV: 4 F: FTMS
 + p ESI d Full ms2
 375.34@hcd35.00
 [50.00-400.00]