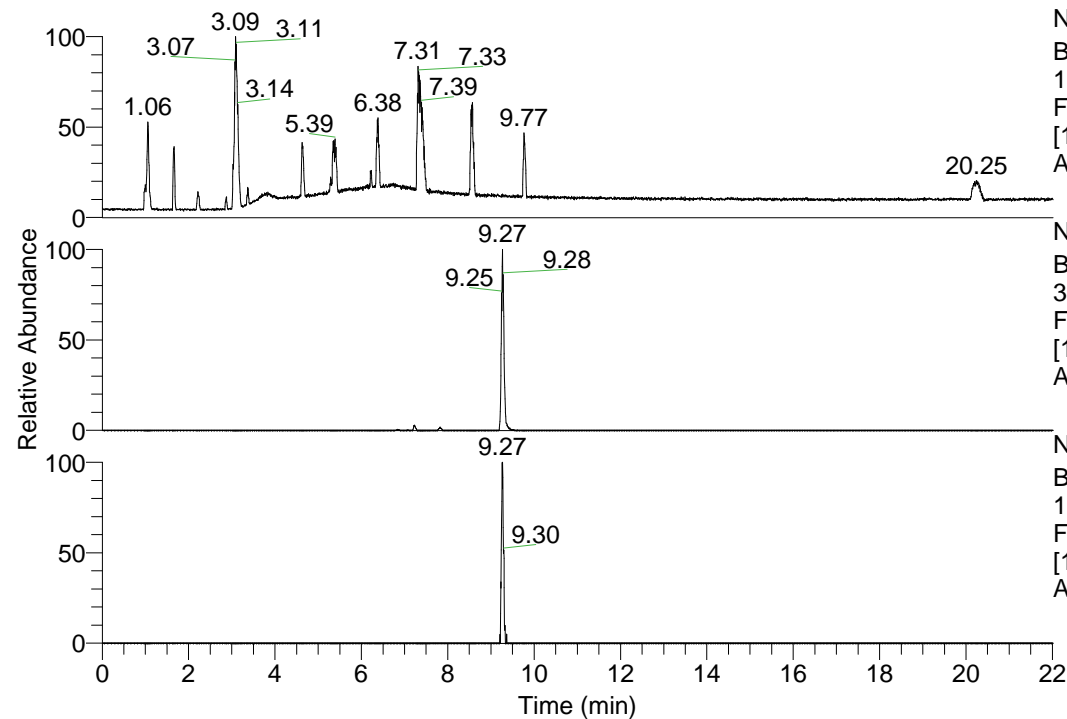


RT: 0.00 - 22.01



NL: 1.69E8  
 Base Peak m/z=  
 100.00000-1500.00000 F:  
 FTMS + p ESI Full ms  
 [100.00-1500.00] MS  
 Apotteri\_HDX

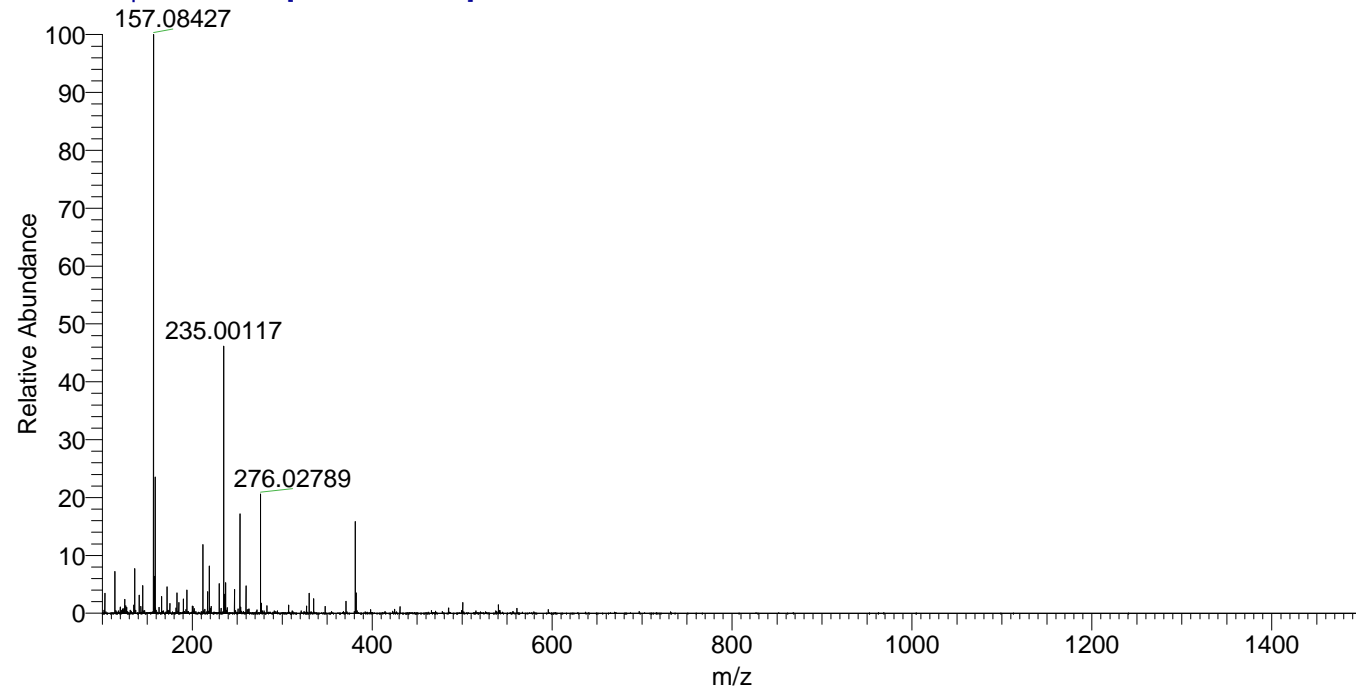
Apotteri\_HDX#1504 RT: 9.27  
 T: FTMS + p ESI Full ms [100.00-1500.00]  
 m/z= 381.00000-382.00000

m/z	Intensity	Relative	Delta (ppm)	Composition
381.33694	3534465.3	100.00	0.06	C <sub>21</sub> H <sub>31</sub> <sup>2</sup> H <sub>6</sub> ON <sub>5</sub>
			-4.00	C <sub>21</sub> H <sub>33</sub> <sup>2</sup> H <sub>5</sub> ON <sub>5</sub>
			4.12	C <sub>21</sub> H <sub>29</sub> <sup>2</sup> H <sub>7</sub> ON <sub>5</sub>

NL: 3.56E6  
 Base Peak m/z=  
 381.33401-381.33783 F:  
 FTMS + p ESI Full ms  
 [100.00-1500.00] MS  
 Apotteri\_HDX

NL: 6.82E4  
 Base Peak m/z=  
 191.67405-191.67597 F:  
 FTMS + p ESI Full ms  
 [100.00-1500.00] MS  
 Apotteri\_HDX

Apotteri\_HDX #1504 RT: 9.27 AV: 1 NL: 2.18E7  
 T: FTMS + p ESI Full ms [100.00-1500.00]



Apotteri\_HDX #1504 RT: 9.27 AV: 1 NL: 3.45E6  
 T: FTMS + p ESI Full ms [100.00-1500.00]

