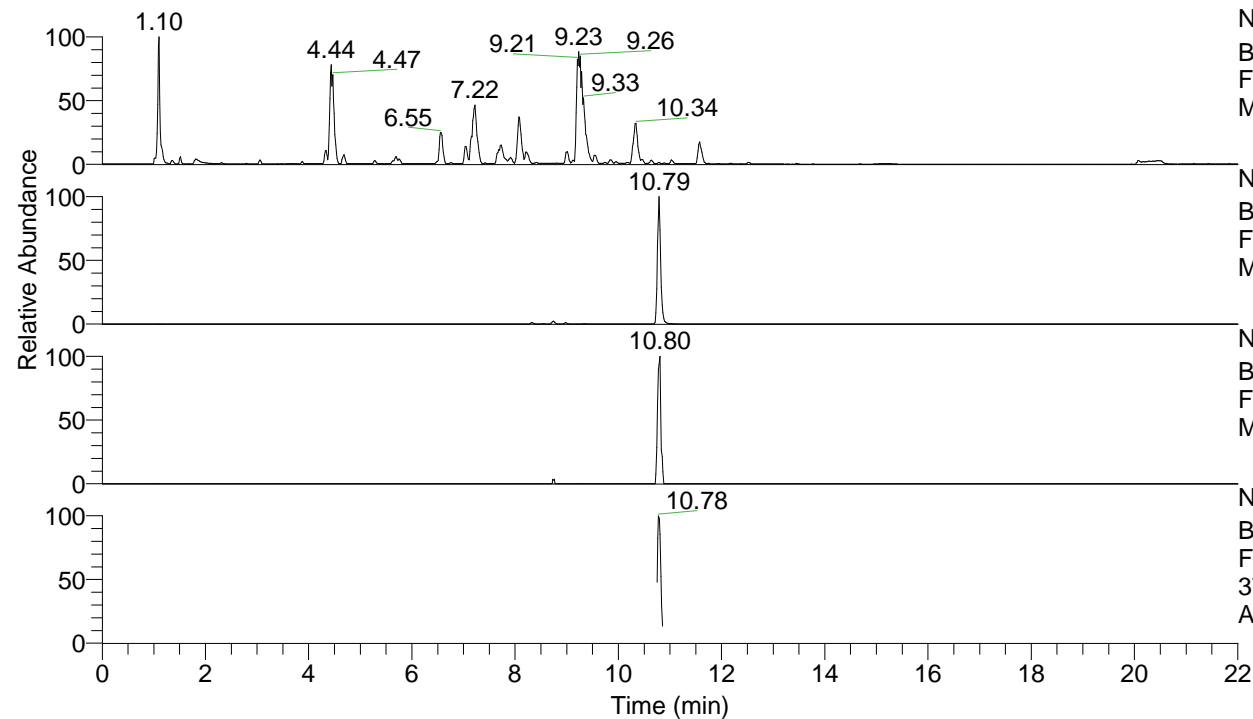


RT: 0.00 - 22.00



NL: 1.25E8  
 Base Peak m/z= 100.00000-1500.00000 F:  
 FTMS + p ESI Full ms [100.00-1500.00]  
 MS Apotteri

NL: 1.91E6  
 Base Peak m/z= 374.29012-374.29386 F:  
 FTMS + p ESI Full ms [100.00-1500.00]  
 MS Apotteri

NL: 4.91E4  
 Base Peak m/z= 187.64897-187.65085 F:  
 FTMS + p ESI Full ms [100.00-1500.00]  
 MS Apotteri

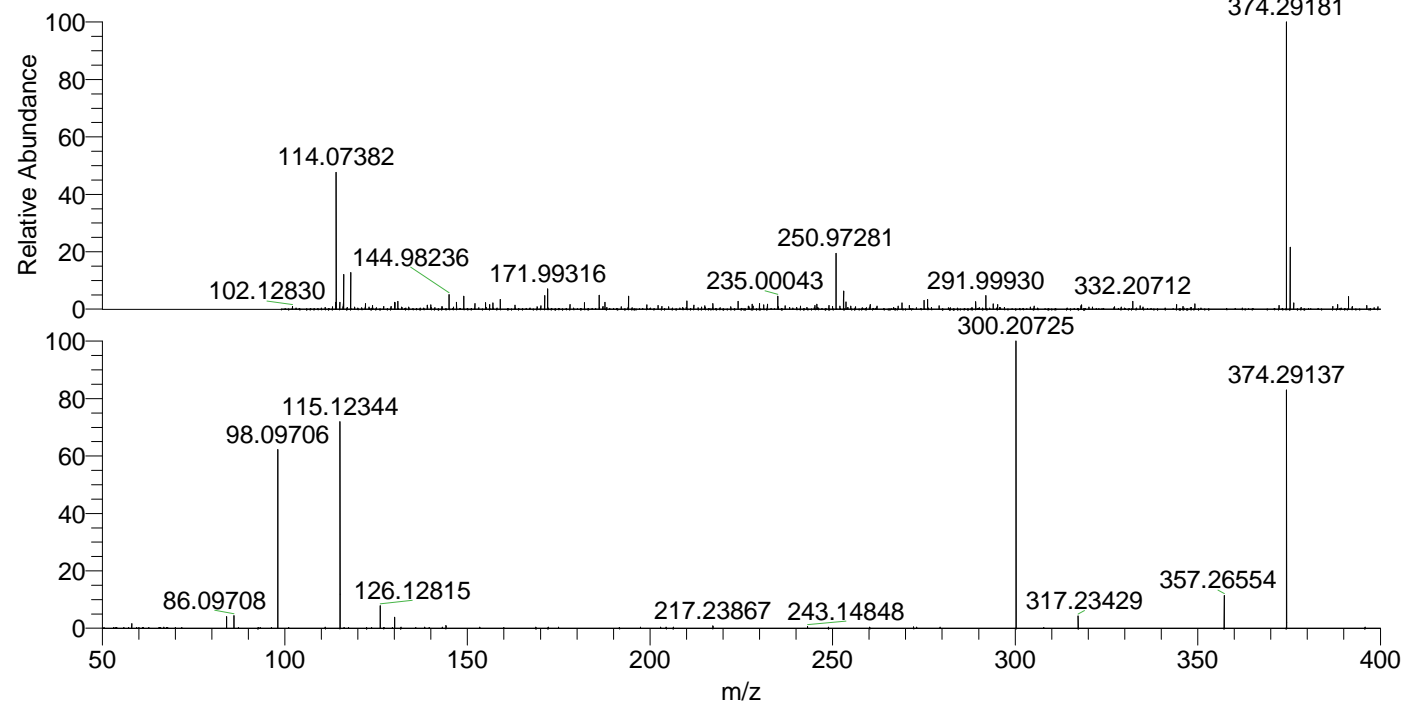
NL: 2.47E5  
 Base Peak m/z= 50.00000-1500.00000 F:  
 FTMS + p ESI d Full ms2  
 374.29@hcd35.00 [50.00-400.00] MS  
 Apotteri

Apotteri#4324-4352 RT: 10.75-10.82

F: FTMS + p ESI d Full ms2 374.29 ...

m/z = 50.00000-1000.00000

m/z	Intensity	Relative
58.06599	3027.6	1.64
84.08161	7725.5	4.20
86.09708	8542.8	4.64
98.09706	116068.9	63.06
115.12344	132854.9	72.18
126.12815	14782.5	8.03
130.06563	7113.0	3.86
144.08058	1383.3	0.75
144.13830	1729.3	0.94
217.23867	1476.3	0.80
243.14848	1160.5	0.63
300.20725	184065.3	100.00
317.23429	8197.0	4.45
357.26554	21189.3	11.51
374.29137	154022.9	83.68



NL: 1.85E6  
 Apotteri#4339 RT: 10.79  
 AV: 1 T: FTMS + p ESI  
 Full ms [100.00-1500.00]

NL: 1.84E5  
 Apotteri#4323-4356 RT:  
 10.75-10.82 AV: 6 F:  
 FTMS + p ESI d Full ms2  
 374.29@hcd35.00  
 [50.00-400.00]