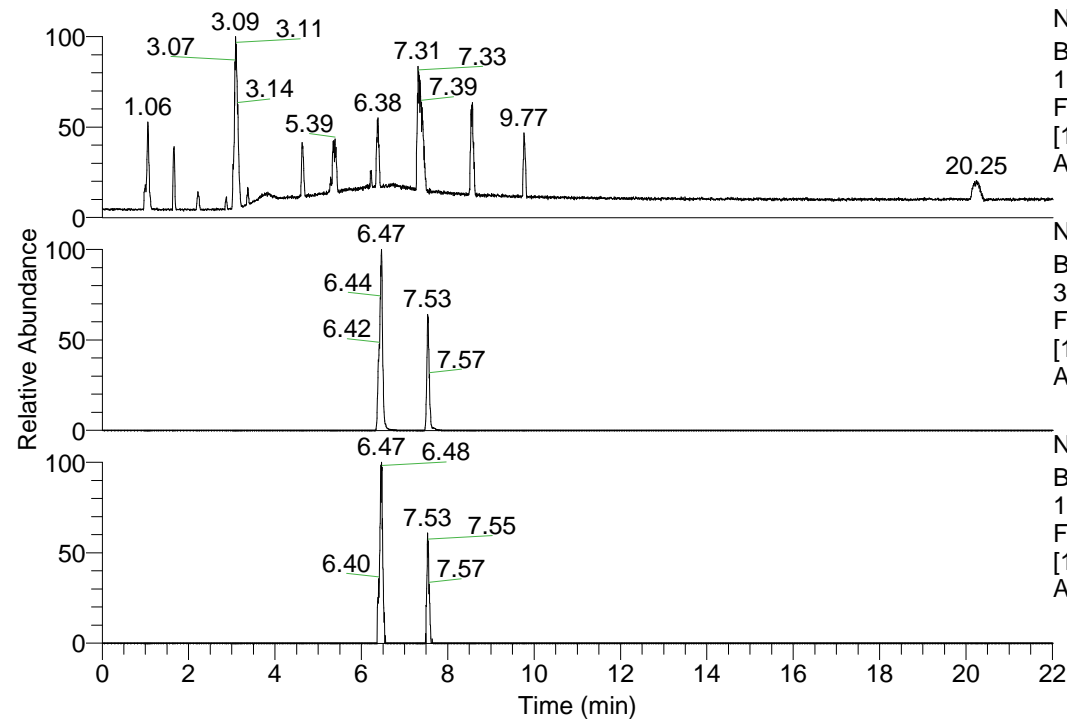


RT: 0.00 - 22.01



NL: 1.69E8
 Base Peak m/z=
 100.00000-1500.00000 F:
 FTMS + p ESI Full ms
 [100.00-1500.00] MS
 Apotteri_HDX

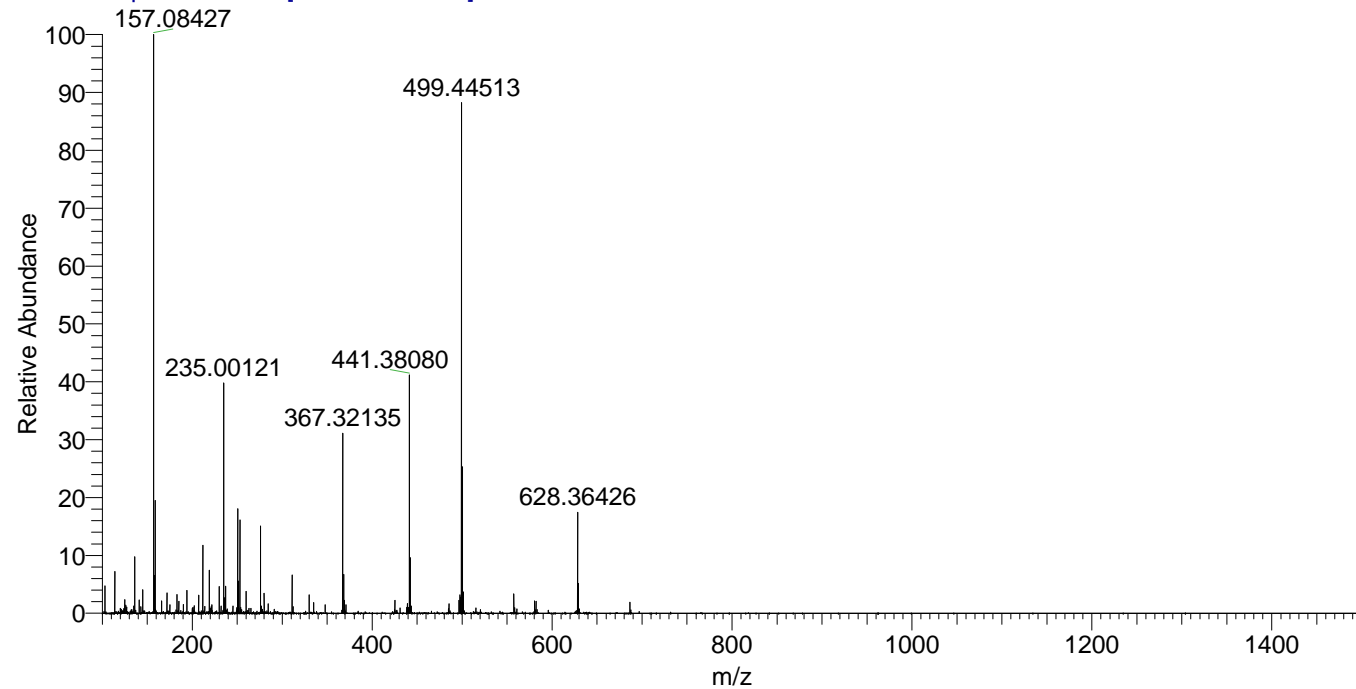
NL: 1.42E7
 Base Peak m/z=
 367.31843-367.32211 F:
 FTMS + p ESI Full ms
 [100.00-1500.00] MS
 Apotteri_HDX

NL: 1.78E5
 Base Peak m/z=
 184.66627-184.66811 F:
 FTMS + p ESI Full ms
 [100.00-1500.00] MS
 Apotteri_HDX

Apotteri_HDX#1214 RT: 7.53
 T: FTMS + p ESI Full ms [100.00-1500.00]
 m/z= 367.00000-368.00000

m/z	Intensity	Relative	Delta (ppm)	Composition
367.32135	7476091.5	100.00	0.21	C ₂₀ H ₂₉ ² H ₆ ON ₅
			-4.00	C ₂₀ H ₃₁ ² H ₅ ON ₅
			4.43	C ₂₀ H ₂₇ ² H ₇ ON ₅

Apotteri_HDX #1214 RT: 7.53 AV: 1 NL: 2.27E7
 T: FTMS + p ESI Full ms [100.00-1500.00]



Apotteri_HDX #1214 RT: 7.53 AV: 1 NL: 7.05E6
 T: FTMS + p ESI Full ms [100.00-1500.00]

