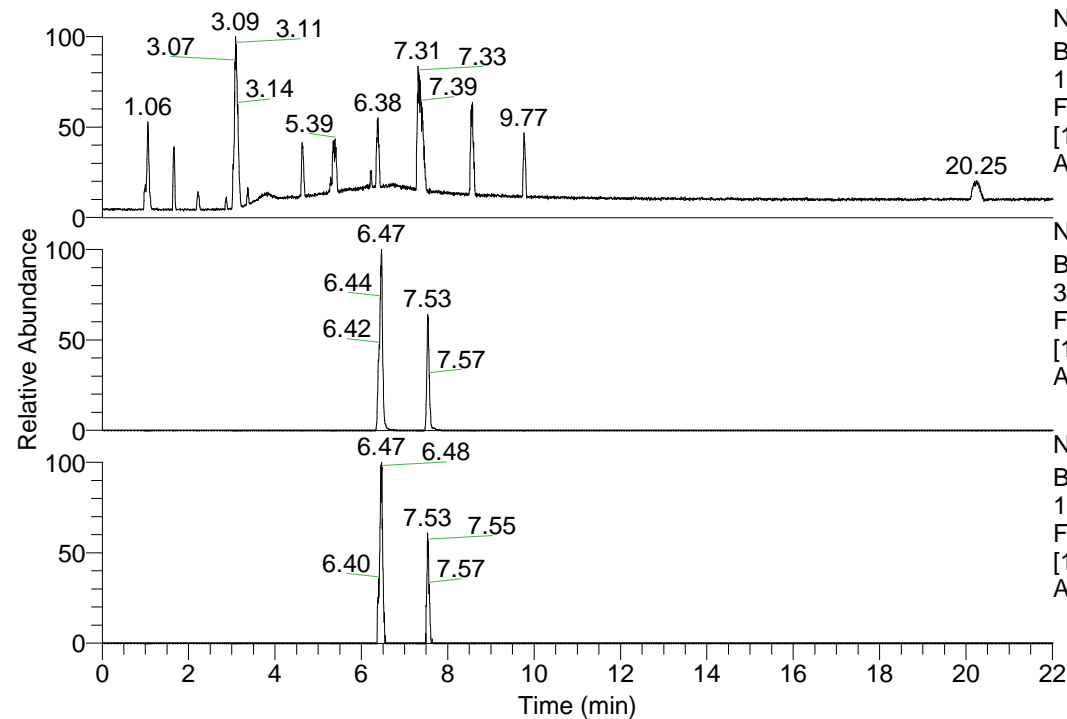


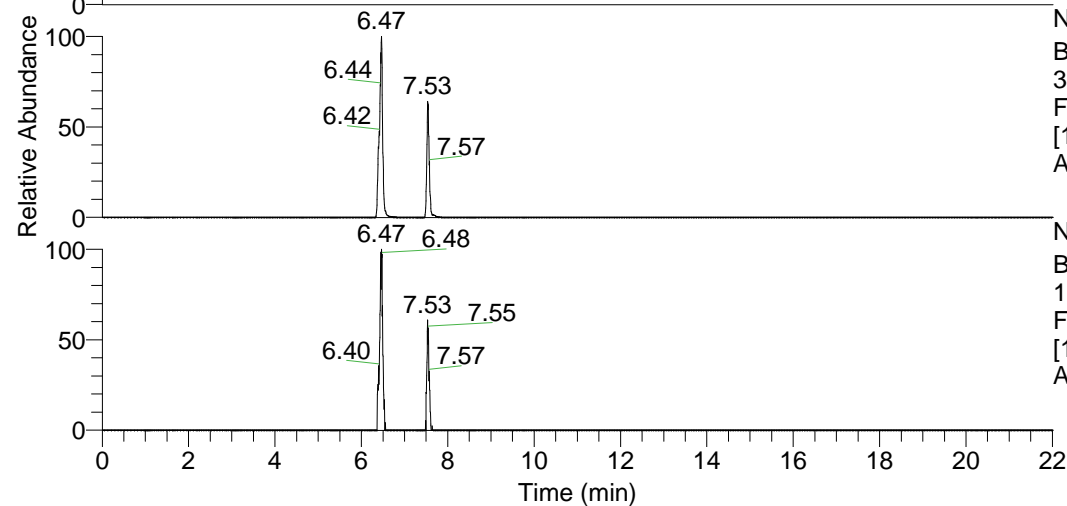
RT: 0.00 - 22.01



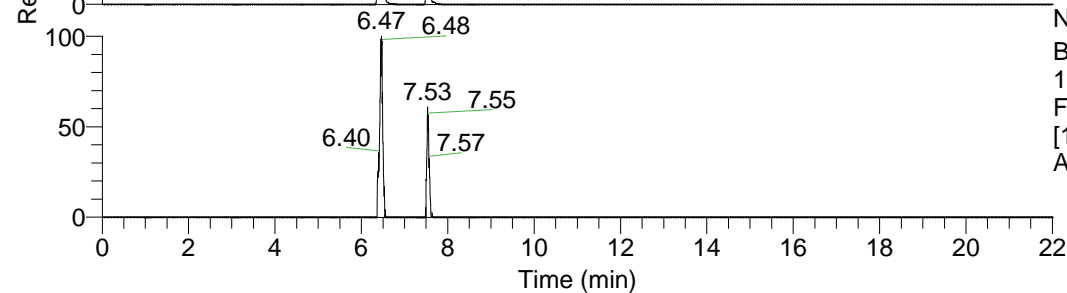
NL: 1.69E8
 Base Peak m/z=
 100.00000-1500.00000 F:
 FTMS + p ESI Full ms
 [100.00-1500.00] MS
 Apotteri_HDX

Apotteri_HDX#1035 RT: 6.47
 T: FTMS + p ESI Full ms [100.00-1500.00]
 m/z = 367.00000-368.00000

| m/z | Intensity | Relative | Delta (ppm) | Composition |
|-----------|------------|----------|-------------|---|
| 367.32135 | 13240061.0 | 100.00 | 0.21 | C ₂₀ H ₂₉ ² H ₆ ON ₅ |
| | | | -4.00 | C ₂₀ H ₃₁ ² H ₅ ON ₅ |
| | | | 4.43 | C ₂₀ H ₂₇ ² H ₇ ON ₅ |

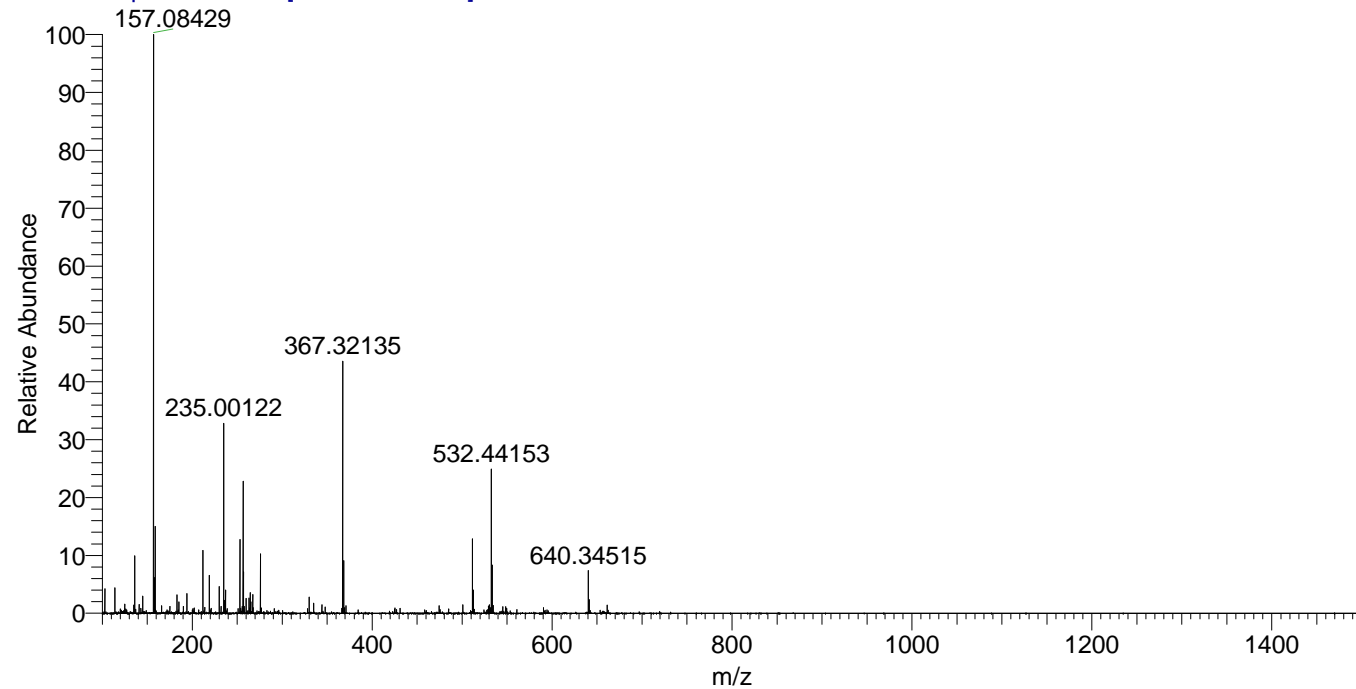


NL: 1.42E7
 Base Peak m/z=
 367.31843-367.32211 F:
 FTMS + p ESI Full ms
 [100.00-1500.00] MS
 Apotteri_HDX



NL: 1.78E5
 Base Peak m/z=
 184.66627-184.66811 F:
 FTMS + p ESI Full ms
 [100.00-1500.00] MS
 Apotteri_HDX

Apotteri_HDX #1035 RT: 6.47 AV: 1 NL: 2.89E7
 T: FTMS + p ESI Full ms [100.00-1500.00]



Apotteri_HDX #1035 RT: 6.47 AV: 1 NL: 1.26E7
 T: FTMS + p ESI Full ms [100.00-1500.00]

