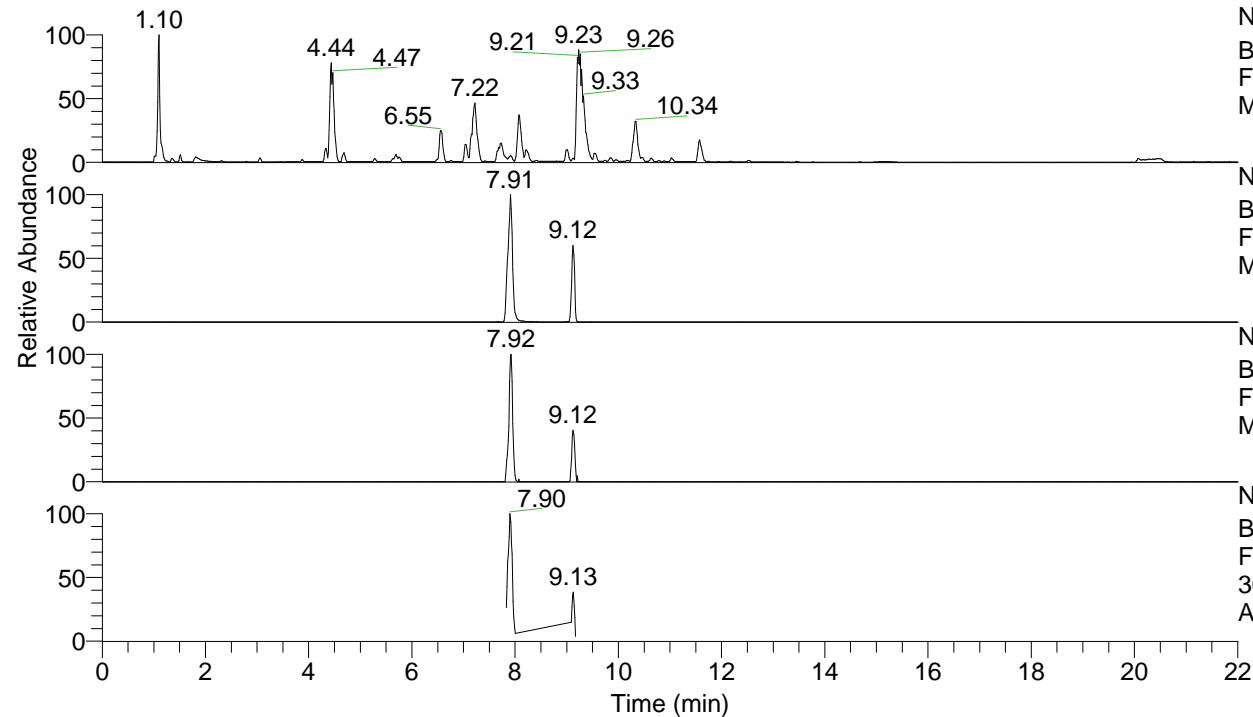


RT: 0.00 - 22.00



NL: 1.25E8
 Base Peak m/z= 100.00000-1500.00000 F:
 FTMS + p ESI Full ms [100.00-1500.00]
 MS Apotteri

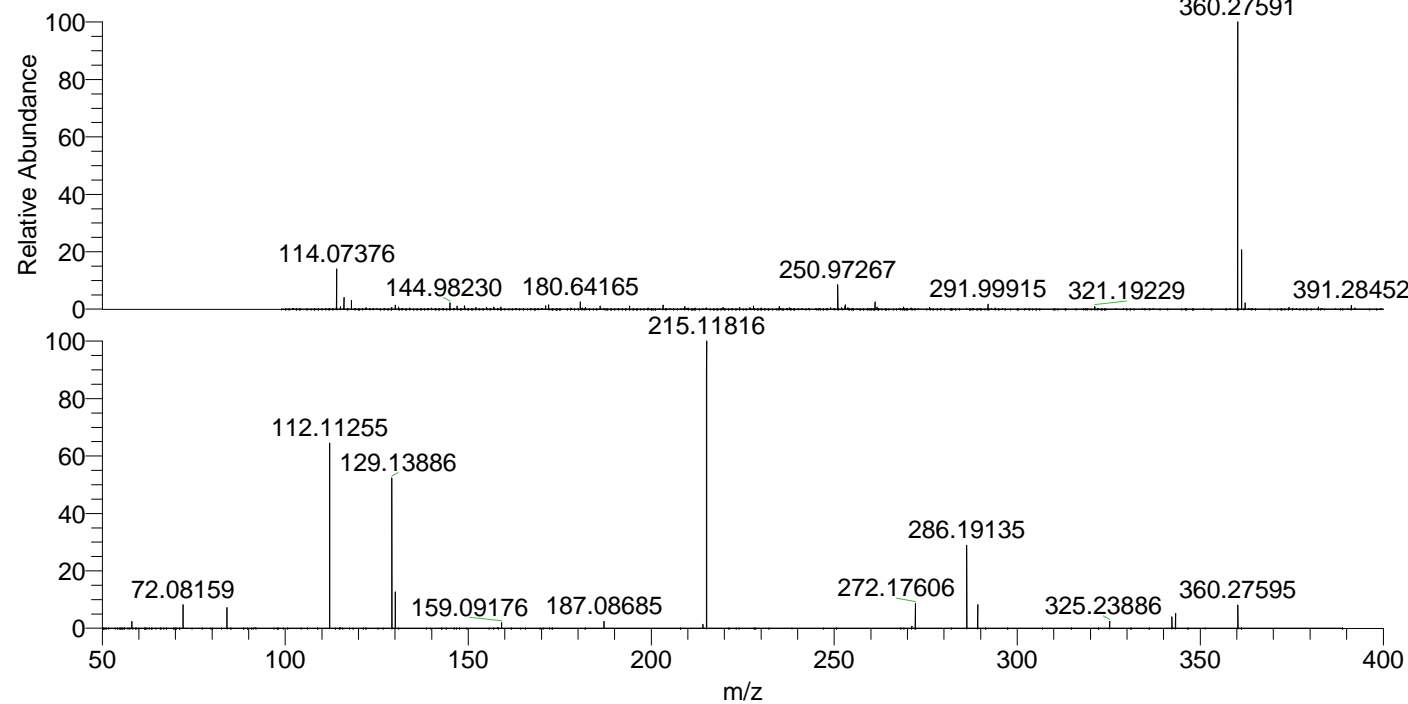
NL: 6.98E6
 Base Peak m/z= 360.27454-360.27814 F:
 FTMS + p ESI Full ms [100.00-1500.00]
 MS Apotteri

NL: 1.78E5
 Base Peak m/z= 180.64118-180.64298 F:
 FTMS + p ESI Full ms [100.00-1500.00]
 MS Apotteri

NL: 1.36E6
 Base Peak m/z= 50.00000-1500.00000 F:
 FTMS + p ESI d Full ms2
 360.28@hcd35.00 [50.00-385.00] MS
 Apotteri

Apotteri#3147-3200 RT: 7.84-7.97 AV:
 F: FTMS + p ESI d Full ms2 360.28 ...
 m/z= 50.00000-1000.00000

m/z	Intensity	Relative
58.06604	20453.4	2.48
72.08159	67955.5	8.25
84.08148	59614.3	7.24
112.11255	529192.3	64.27
129.13886	443929.5	53.91
130.06525	106514.9	12.94
159.09176	15771.2	1.92
187.08685	19412.2	2.36
214.13398	11148.6	1.35
215.11816	823425.4	100.00
271.19150	5844.2	0.71
272.17606	72039.2	8.75
286.19135	236819.2	28.76
289.20217	69102.1	8.39
325.23886	19384.8	2.35
342.26510	32349.9	3.93
343.24878	43251.4	5.25
360.27595	66762.4	8.11



NL: 6.97E6
 Apotteri#3175 RT: 7.91
 AV: 1 T: FTMS + p ESI
 Full ms [100.00-1500.00]

NL: 8.19E5
 Apotteri#3143-3200 RT:
 7.84-7.97 AV: 10 F:
 FTMS + p ESI d Full ms2
 360.28@hcd35.00
 [50.00-385.00]