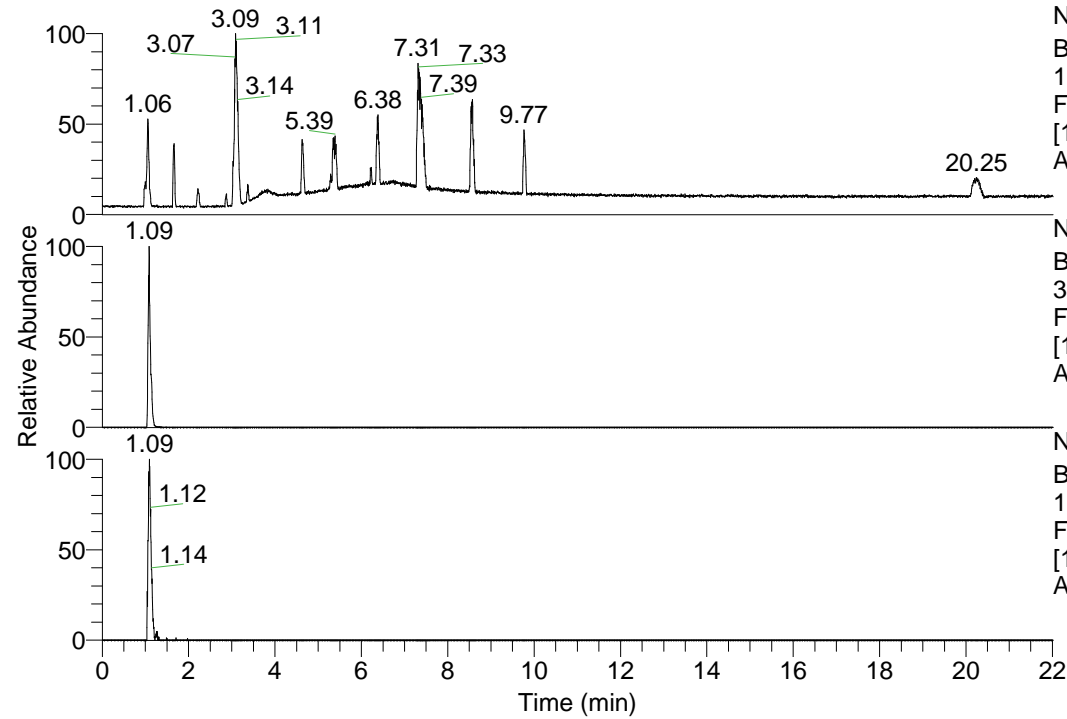


RT: 0.00 - 22.01



NL: 1.69E8
 Base Peak m/z=
 100.00000-1500.00000 F:
 FTMS + p ESI Full ms
 [100.00-1500.00] MS
 Apotteri_HDX

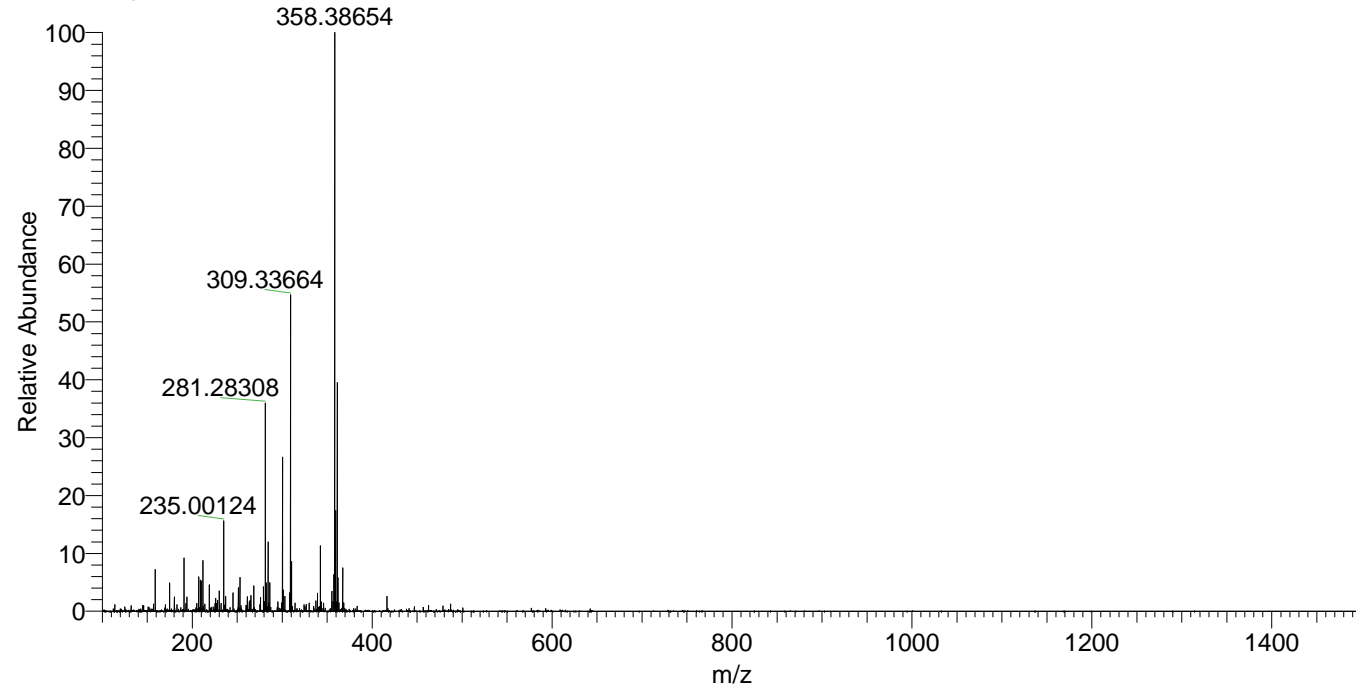
NL: 3.51E6
 Base Peak m/z=
 367.39821-367.40189 F:
 FTMS + p ESI Full ms
 [100.00-1500.00] MS
 Apotteri_HDX

NL: 2.12E5
 Base Peak m/z=
 184.70616-184.70800 F:
 FTMS + p ESI Full ms
 [100.00-1500.00] MS
 Apotteri_HDX

Apotteri_HDX#166 RT: 1.09
 T: FTMS + p ESI Full ms [100.00-1500.00]
 m/z= 367.00000-368.00000

m/z	Intensity	Relative	Delta (ppm)	Composition
367.40091	3300433.0	100.00	-0.38	C ₁₈ H ₃₇ ² H ₇ ON ₆
			3.83	C ₁₈ H ₃₅ ² H ₈ ON ₆
			-4.59	C ₁₈ H ₃₉ ² H ₆ ON ₆

Apotteri_HDX #165 RT: 1.09 AV: 1 NL: 4.59E7
 T: FTMS + p ESI Full ms [100.00-1500.00]



Apotteri_HDX #166 RT: 1.09 AV: 1 NL: 3.38E7
 T: FTMS + p ESI Full ms [100.00-1500.00]

