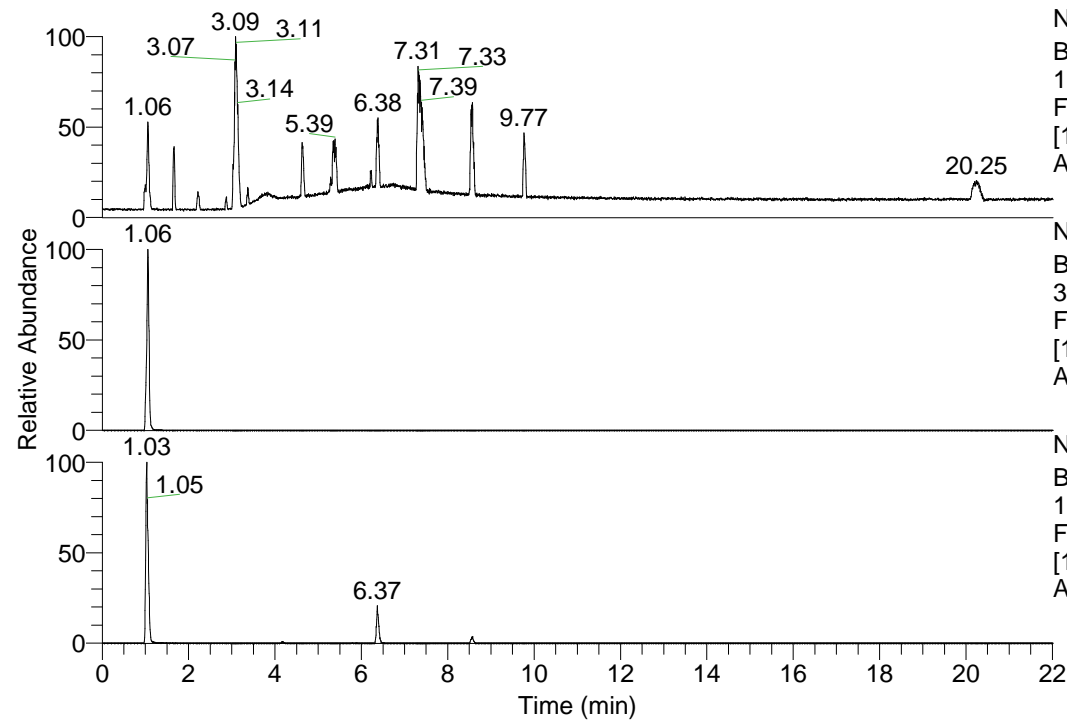


RT: 0.00 - 22.01

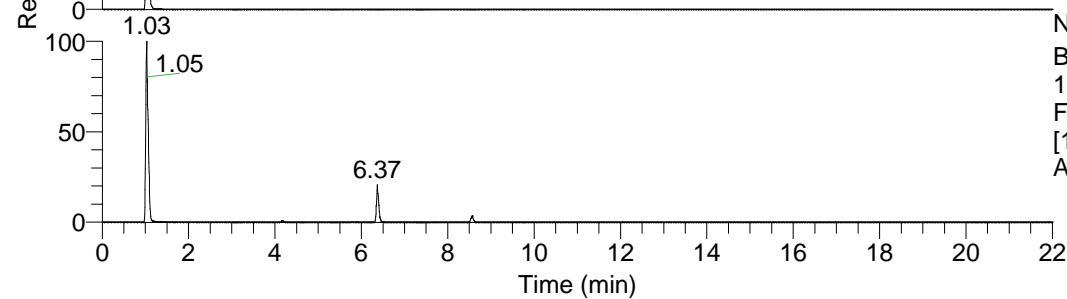


NL: 1.69E8
 Base Peak m/z=
 100.00000-1500.00000 F:
 FTMS + p ESI Full ms
 [100.00-1500.00] MS
 Apotteri_HDX

Apotteri_HDX#160 RT: 1.06
 T: FTMS + p ESI Full ms [100.00-1500.00]
 m/z= 358.00000-359.00000

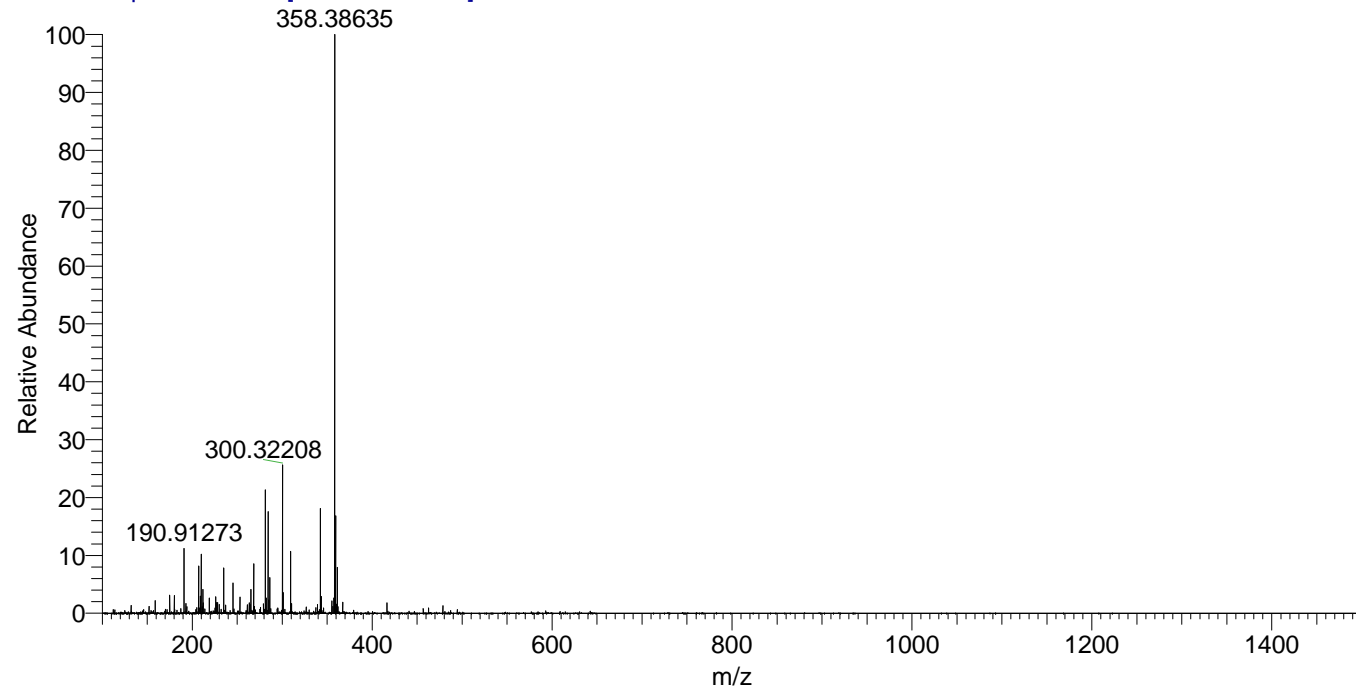
m/z	Intensity	Relative	Delta (ppm)	Composition
358.38635	89009688.0	100.00	-0.66	C ₁₆ H ₃₄ ² H ₈ O ₂ N ₆
			3.66	C ₁₆ H ₃₂ ² H ₉ O ₂ N ₆

NL: 8.90E7
 Base Peak m/z=
 358.38380-358.38738 F:
 FTMS + p ESI Full ms
 [100.00-1500.00] MS
 Apotteri_HDX



NL: 4.38E6
 Base Peak m/z=
 180.19895-180.20075 F:
 FTMS + p ESI Full ms
 [100.00-1500.00] MS
 Apotteri_HDX

Apotteri_HDX #160 RT: 1.06 AV: 1 NL: 8.51E7
 T: FTMS + p ESI Full ms [100.00-1500.00]



Apotteri_HDX #160 RT: 1.06 AV: 1 NL: 8.51E7
 T: FTMS + p ESI Full ms [100.00-1500.00]

