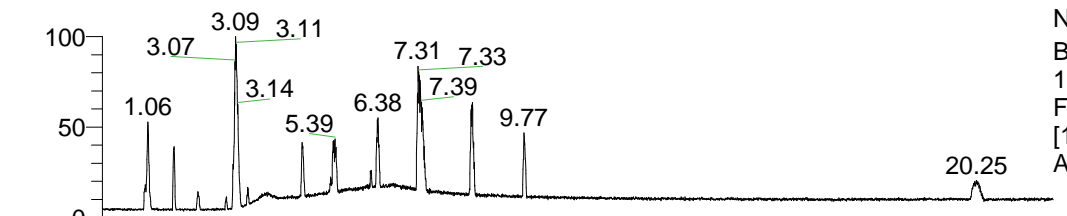


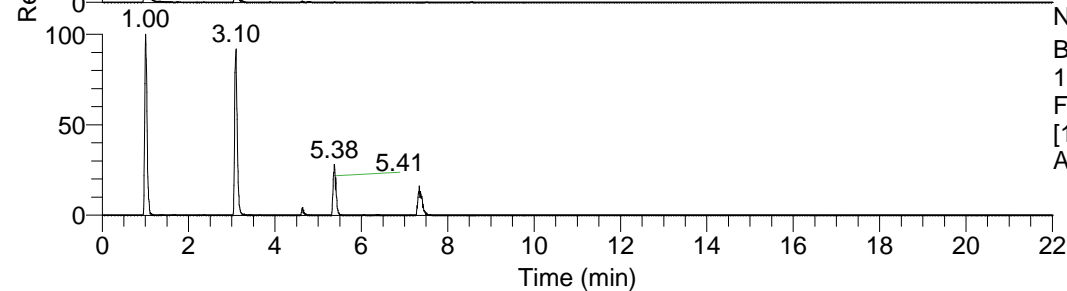
RT: 0.00 - 22.01



NL: 1.69E8
 Base Peak m/z=
 100.00000-1500.00000 F:
 FTMS + p ESI Full ms
 [100.00-1500.00] MS
 Apotteri_HDX



NL: 1.69E7
 Base Peak m/z=
 342.38897-342.39239 F:
 FTMS + p ESI Full ms
 [100.00-1500.00] MS
 Apotteri_HDX

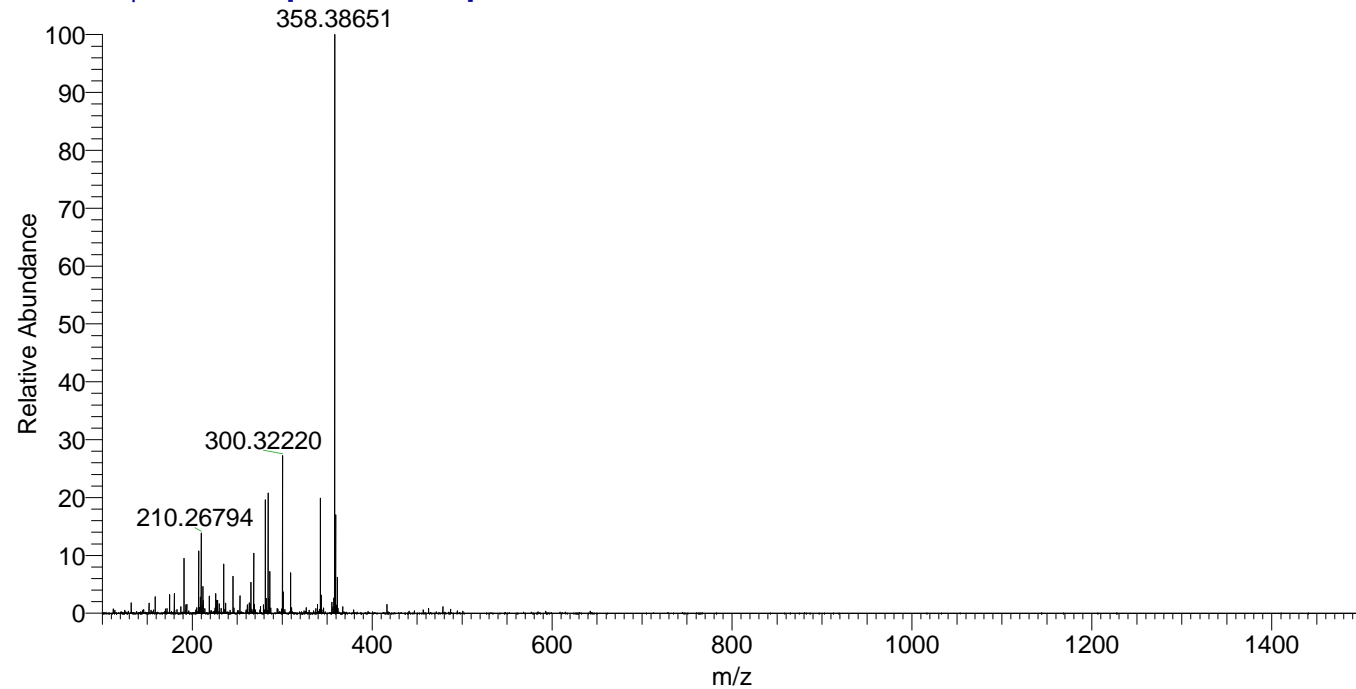


NL: 2.58E6
 Base Peak m/z=
 172.20153-172.20325 F:
 FTMS + p ESI Full ms
 [100.00-1500.00] MS
 Apotteri_HDX

Apotteri_HDX#159 RT: 1.05
 T: FTMS + p ESI Full ms [100.00-1500.00]
 m/z= 342.00000-343.00000

m/z	Intensity	Relative	Delta (ppm)	Composition
342.39169	15961887.0	100.00	0.05	C ₁₆ H ₃₄ ² H ₈ ON ₆
			4.57	C ₁₆ H ₃₂ ² H ₉ ON ₆

Apotteri_HDX #159 RT: 1.05 AV: 1 NL: 7.79E7
 T: FTMS + p ESI Full ms [100.00-1500.00]



Apotteri_HDX #159 RT: 1.05 AV: 1 NL: 1.55E7
 T: FTMS + p ESI Full ms [100.00-1500.00]

