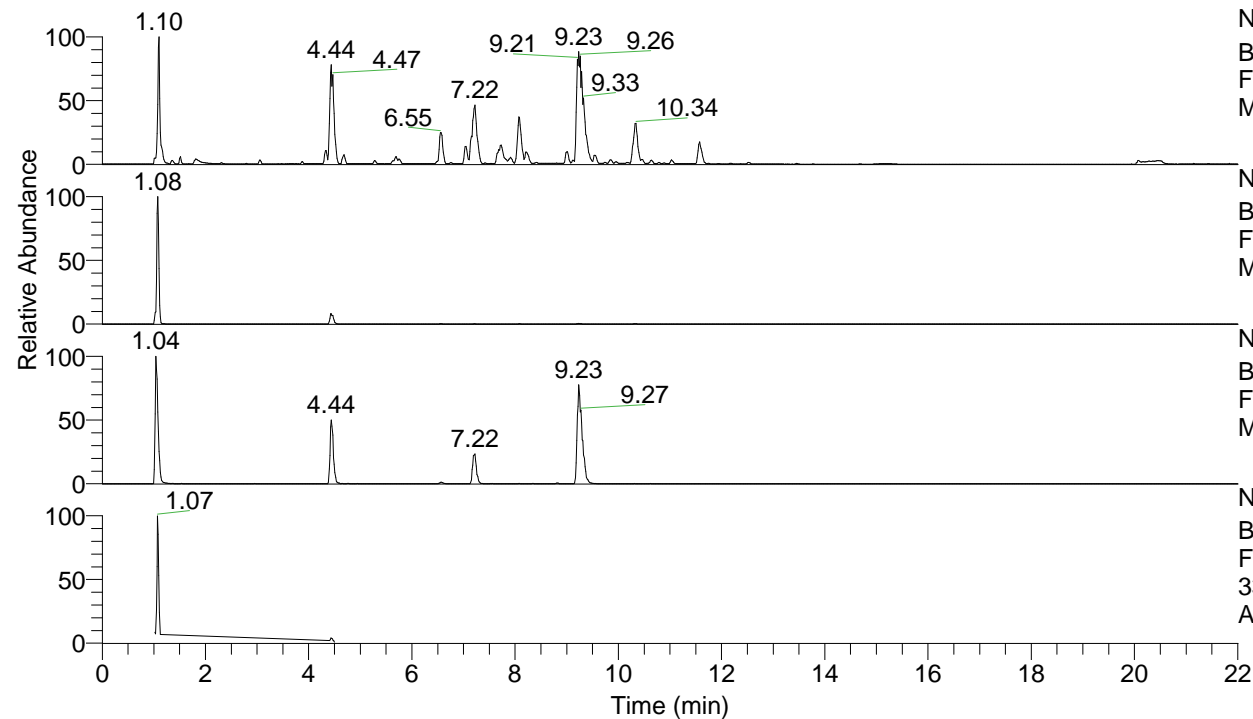


RT: 0.00 - 22.00



NL: 1.25E8
 Base Peak m/z= 100.00000-1500.00000 F:
 FTMS + p ESI Full ms [100.00-1500.00]
 MS Apotteri

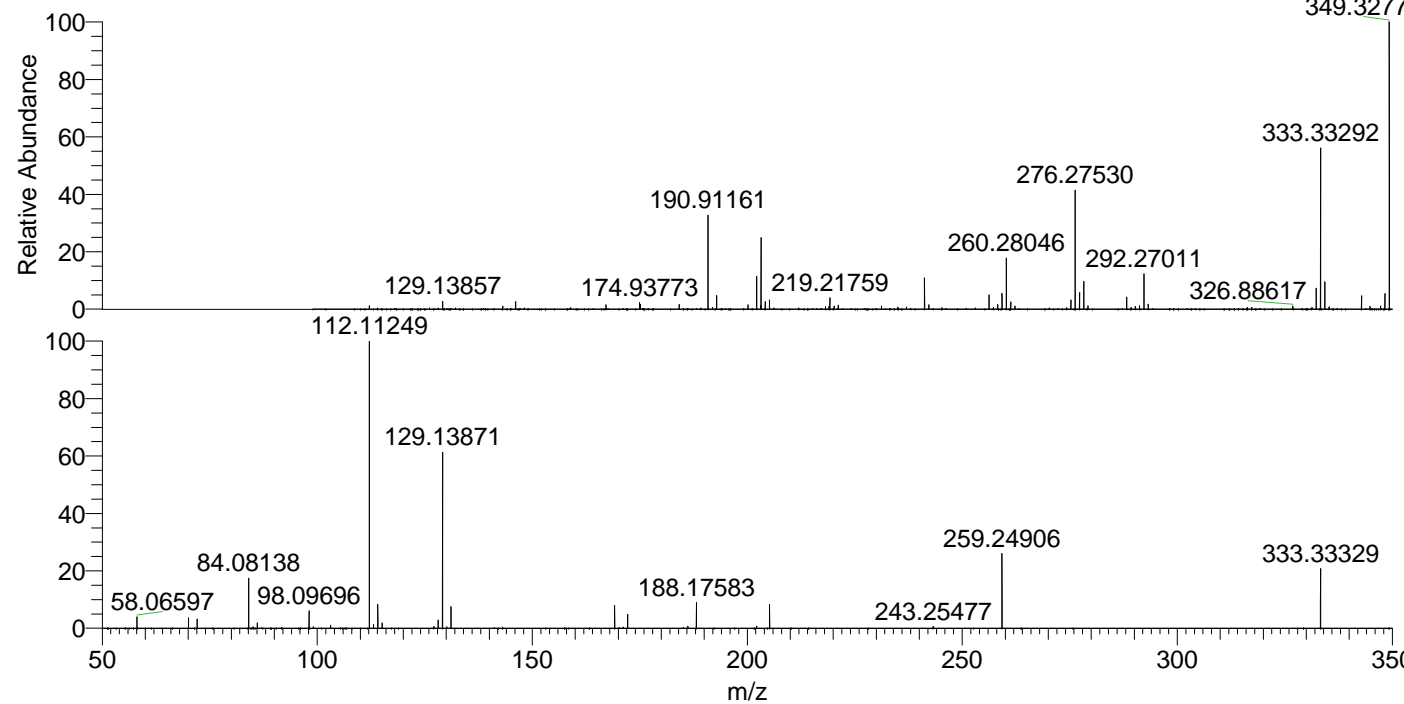
NL: 3.50E7
 Base Peak m/z= 333.33251-333.33585 F:
 FTMS + p ESI Full ms [100.00-1500.00]
 MS Apotteri

NL: 1.61E6
 Base Peak m/z= 167.17016-167.17184 F:
 FTMS + p ESI Full ms [100.00-1500.00]
 MS Apotteri

NL: 6.89E6
 Base Peak m/z= 50.00000-1500.00000 F:
 FTMS + p ESI d Full ms2
 333.33@hcd35.00 [50.00-360.00] MS
 Apotteri

Apotteri#420-441 RT: 1.05-1.09 AV: 5
 F: FTMS + p ESI d Full ms2 333.33@h ...
 m/z= 50.00000-1000.00000

m/z	Intensity	Relative
58.06597	166047.0	3.99
70.06587	148378.8	3.56
72.08154	133225.0	3.20
84.08138	721078.9	17.31
85.07664	22410.4	0.54
86.06064	77410.8	1.86
98.09696	258449.5	6.20
99.09222	21670.7	0.52
103.08694	42533.6	1.02
112.11249	4166174.3	100.00
113.10769	53946.6	1.29
114.09165	351176.0	8.43
115.12319	76009.0	1.82
127.12343	26720.4	0.64
128.10736	116026.8	2.78
129.13871	2592969.3	62.24
131.11797	309117.0	7.42
169.16984	331037.4	7.95
172.18077	204635.6	4.91
186.19661	29094.4	0.70
188.17583	378785.0	9.09
202.19150	28045.7	0.67
205.20238	344778.1	8.28
243.25477	26501.9	0.64
259.24906	1103846.0	26.50
333.33329	861032.9	20.67



NL: 5.89E7
 Apotteri#433 RT: 1.08
 AV: 1 T: FTMS + p ESI
 Full ms [100.00-1500.00]

NL: 4.13E6
 Apotteri#419-446 RT:
 1.05-1.09 AV: 5 F: FTMS
 + p ESI d Full ms2
 333.33@hcd35.00
 [50.00-360.00]