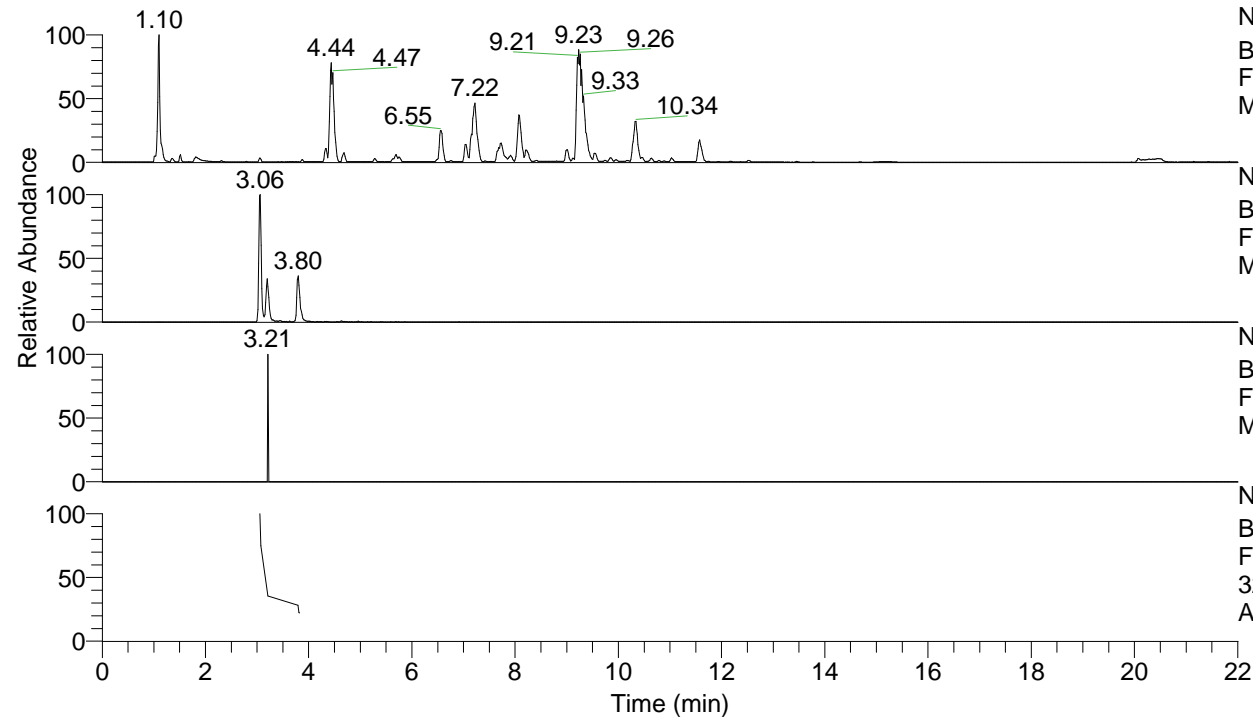


RT: 0.00 - 22.00



NL: 1.25E8  
 Base Peak m/z= 100.00000-1500.00000 F:  
 FTMS + p ESI Full ms [100.00-1500.00]  
 MS Apotteri

NL: 5.05E5  
 Base Peak m/z= 323.24308-323.24632 F:  
 FTMS + p ESI Full ms [100.00-1500.00]  
 MS Apotteri

NL: 1.01E3  
 Base Peak m/z= 162.12545-162.12707 F:  
 FTMS + p ESI Full ms [100.00-1500.00]  
 MS Apotteri

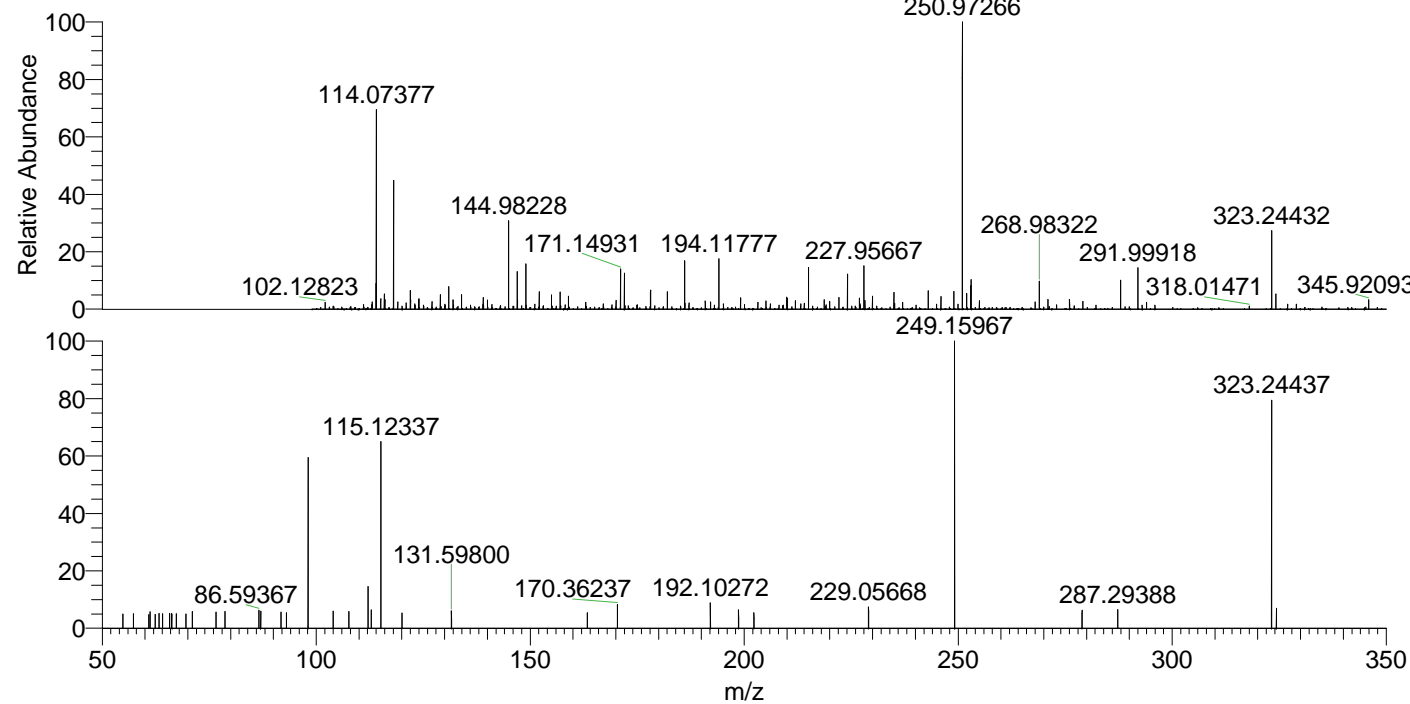
NL: 8.65E4  
 Base Peak m/z= 50.00000-1500.00000 F:  
 FTMS + p ESI d Full ms2  
 323.24@hcd35.00 [50.00-350.00] MS  
 Apotteri

Apotteri#1524-1536 RT: 3.79-3.82 AV: 3

F: FTMS + p ESI d Full ms2 323.24 ...

m/z= 50.00000-1000.00000

m/z	Intensity	Relative
54.81574	914.5	4.88
57.26464	929.2	4.96
60.88441	867.2	4.63
61.20391	1046.1	5.58
62.41213	887.7	4.74
63.24695	965.8	5.15
64.07359	937.9	5.00
65.73489	961.7	5.13
66.18393	945.2	5.04
66.26209	893.1	4.77
66.30257	905.0	4.83
67.28181	930.0	4.96
69.58800	910.0	4.86
71.04187	1072.6	5.72
76.61278	1038.3	5.54
78.66841	1084.8	5.79
86.59367	1158.4	6.18
87.02624	1109.4	5.92
91.75931	1058.4	5.65
93.02321	995.9	5.31
98.09692	11216.7	59.85
103.96493	1089.2	5.81
107.60555	1077.3	5.75
112.11243	2686.1	14.33
112.84528	1195.8	6.38
115.12337	11979.2	63.92
120.06941	997.5	5.32
131.59800	1104.6	5.89
163.34511	1014.5	5.41
170.36237	1549.7	8.27
192.10272	1665.9	8.89
198.68623	1173.0	6.26
202.27684	1012.5	5.40
229.05668	1359.5	7.25
249.15967	18742.2	100.00
278.94730	1151.4	6.14
287.29388	1203.1	6.42
323.24437	14541.9	77.59
324.37566	1303.2	6.95



NL: 6.65E5  
 Apotteri#1525 RT: 3.80  
 AV: 1 T: FTMS + p ESI  
 Full ms [100.00-1500.00]

NL: 1.83E4  
 Apotteri#1507-1548 RT:  
 3.79-3.82 AV: 3 F: FTMS  
 + p ESI d Full ms2  
 323.24@hcd35.00  
 [50.00-350.00]