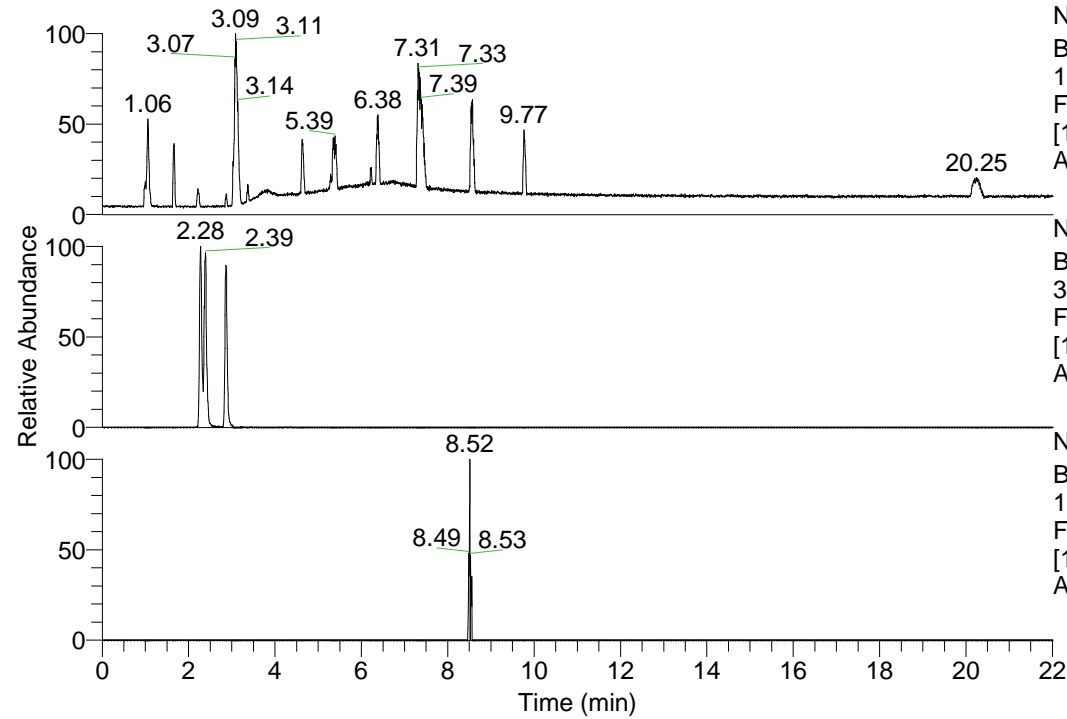


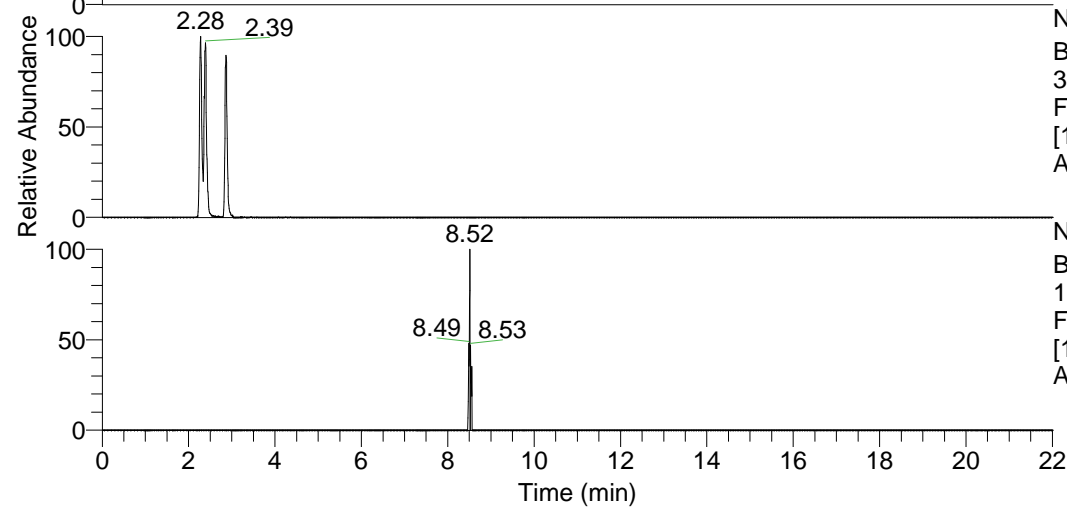
RT: 0.00 - 22.01



NL: 1.69E8
 Base Peak m/z=
 100.00000-1500.00000 F:
 FTMS + p ESI Full ms
 [100.00-1500.00] MS
 Apotteri_HDX

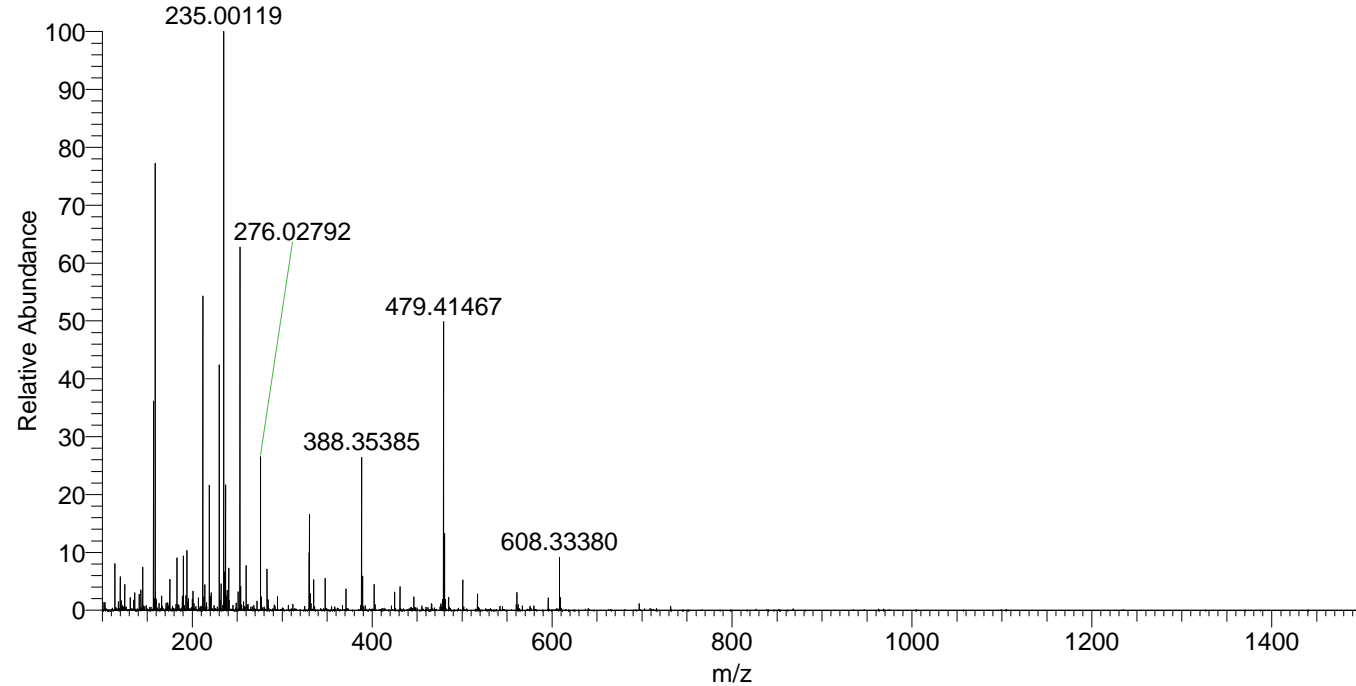
Apotteri_HDX#365 RT: 2.39
 T: FTMS + p ESI Full ms [100.00-1500.00]
 m/z= 330.00000-331.00000

m/z	Intensity	Relative	Delta (ppm)	Composition
330.28946	1231380.1	100.00	-0.54	C ₁₇ H ₂₆ ² H ₆ O ₂ N ₄
			4.15	C ₁₇ H ₂₄ ² H ₇ O ₂ N ₄



NL: 1.28E6
 Base Peak m/z=
 330.28699-330.29029 F:
 FTMS + p ESI Full ms
 [100.00-1500.00] MS
 Apotteri_HDX

Apotteri_HDX #365 RT: 2.39 AV: 1 NL: 7.43E6
 T: FTMS + p ESI Full ms [100.00-1500.00]



Apotteri_HDX #365 RT: 2.39 AV: 1 NL: 1.23E6
 T: FTMS + p ESI Full ms [100.00-1500.00]

