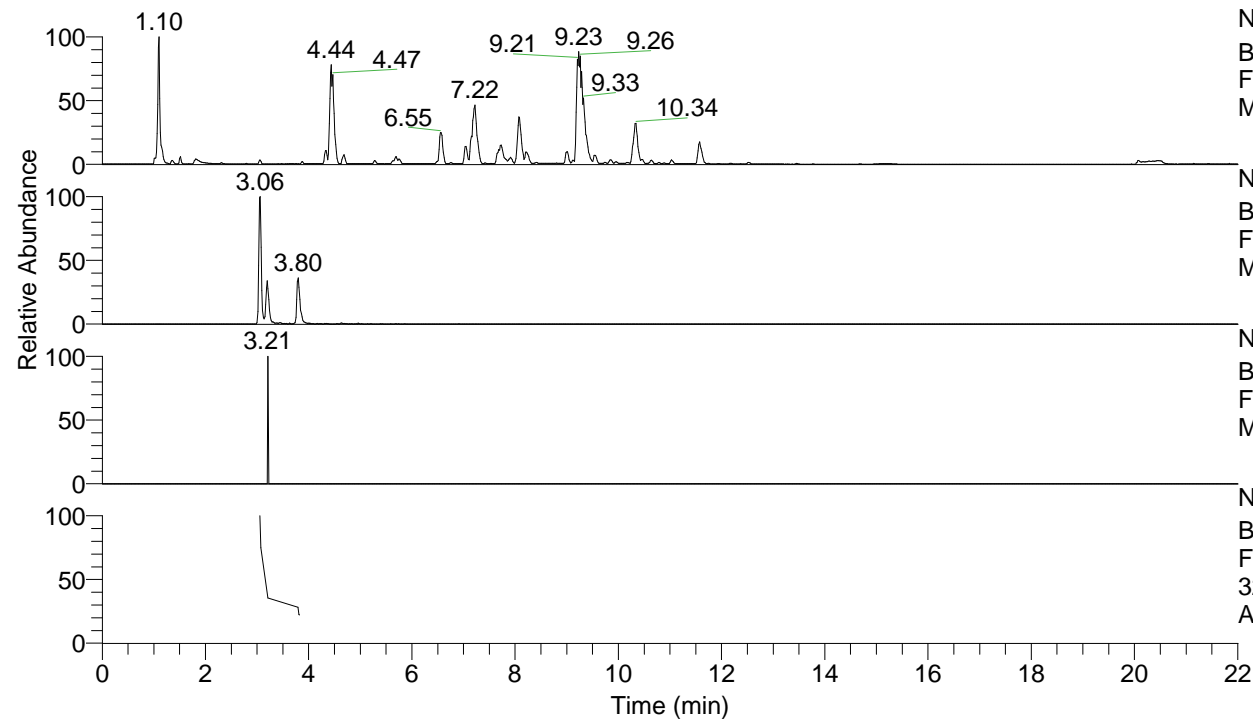


RT: 0.00 - 22.00



NL: 1.25E8  
 Base Peak m/z= 100.00000-1500.00000 F:  
 FTMS + p ESI Full ms [100.00-1500.00]  
 MS Apotteri

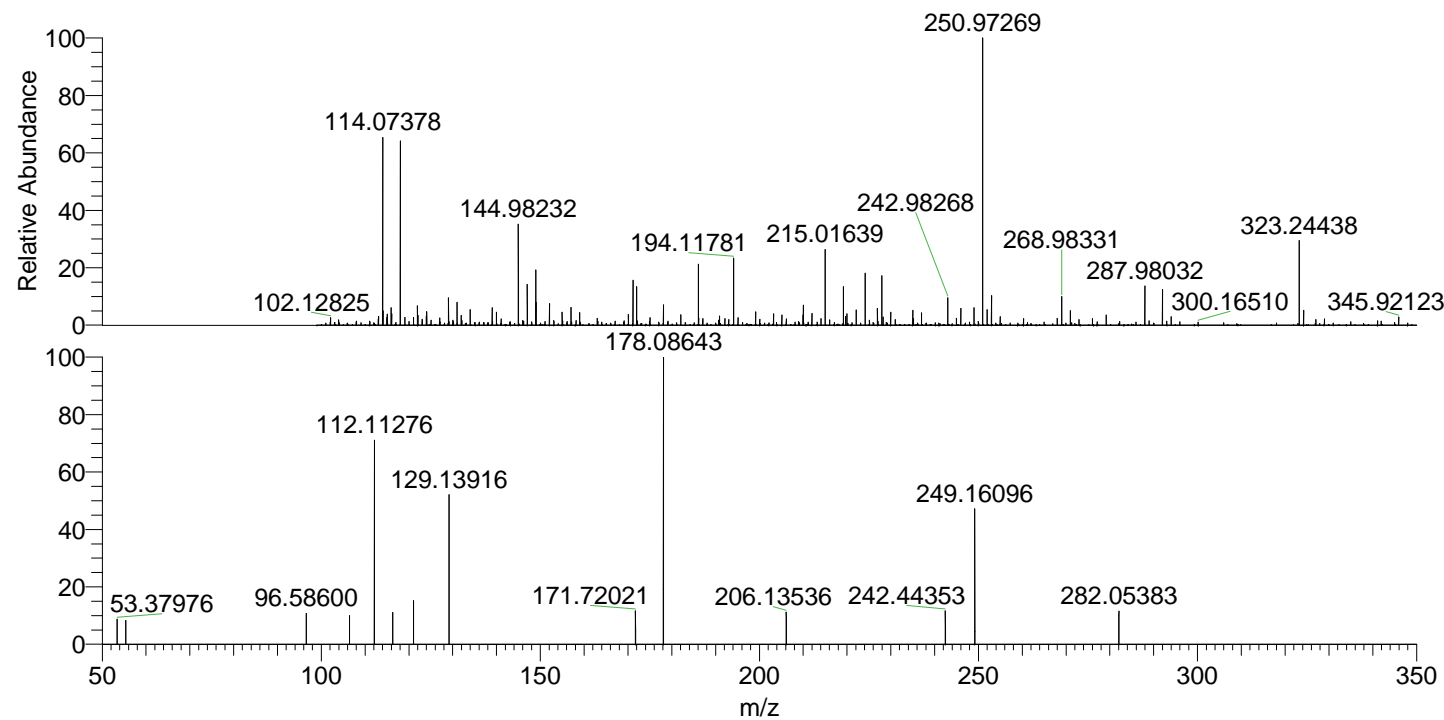
NL: 5.05E5  
 Base Peak m/z= 323.24308-323.24632 F:  
 FTMS + p ESI Full ms [100.00-1500.00]  
 MS Apotteri

NL: 1.01E3  
 Base Peak m/z= 162.12545-162.12707 F:  
 FTMS + p ESI Full ms [100.00-1500.00]  
 MS Apotteri

NL: 8.65E4  
 Base Peak m/z= 50.00000-1500.00000 F:  
 FTMS + p ESI d Full ms2  
 323.24@hcd35.00 [50.00-350.00] MS  
 Apotteri

Apotteri#1290 RT: 3.21  
 F: FTMS + p ESI d Full ms2 323.24 ...  
 m/z= 50.00000-1000.00000

m/z	Intensity	Relative
53.37976	2631.8	8.57
55.35607	2501.8	8.15
96.58600	3403.3	11.08
106.42287	3019.6	9.83
112.11276	22572.6	73.49
116.29675	3362.5	10.95
121.02854	4616.4	15.03
129.13916	16405.3	53.41
171.72021	3515.5	11.45
178.08643	30713.3	100.00
206.13536	3391.4	11.04
242.44353	3503.9	11.41
249.16096	14644.9	47.68
282.05383	3489.1	11.36



NL: 5.81E5  
 Apotteri#1285 RT:  
 3.20 AV: 1 T: FTMS +  
 p ESI Full ms  
 [100.00-1500.00]

NL: 3.01E4  
 Apotteri#1279 RT:  
 3.21 AV: 1 F: FTMS +  
 p ESI d Full ms2  
 323.24@hcd35.00  
 [50.00-350.00]