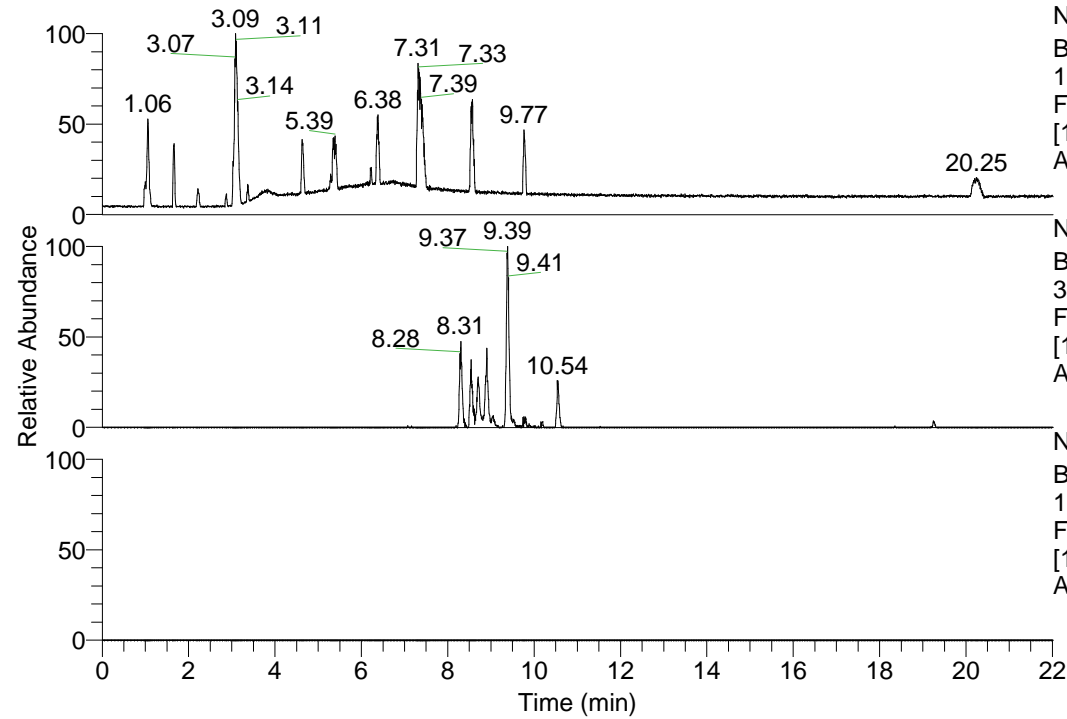


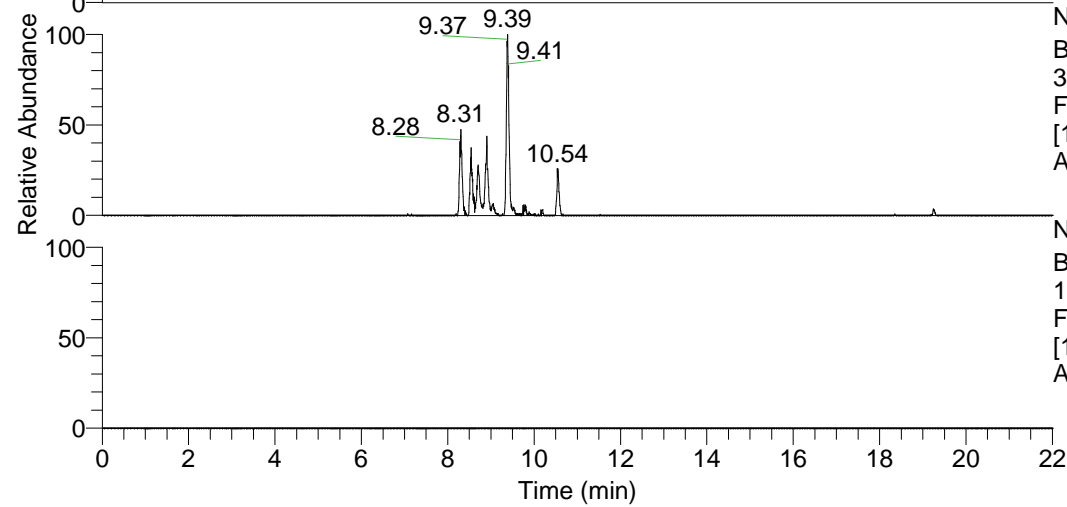
RT: 0.00 - 22.01



NL: 1.69E8
Base Peak m/z=
100.00000-1500.00000 F:
FTMS + p ESI Full ms
[100.00-1500.00] MS
Apotteri_HDX

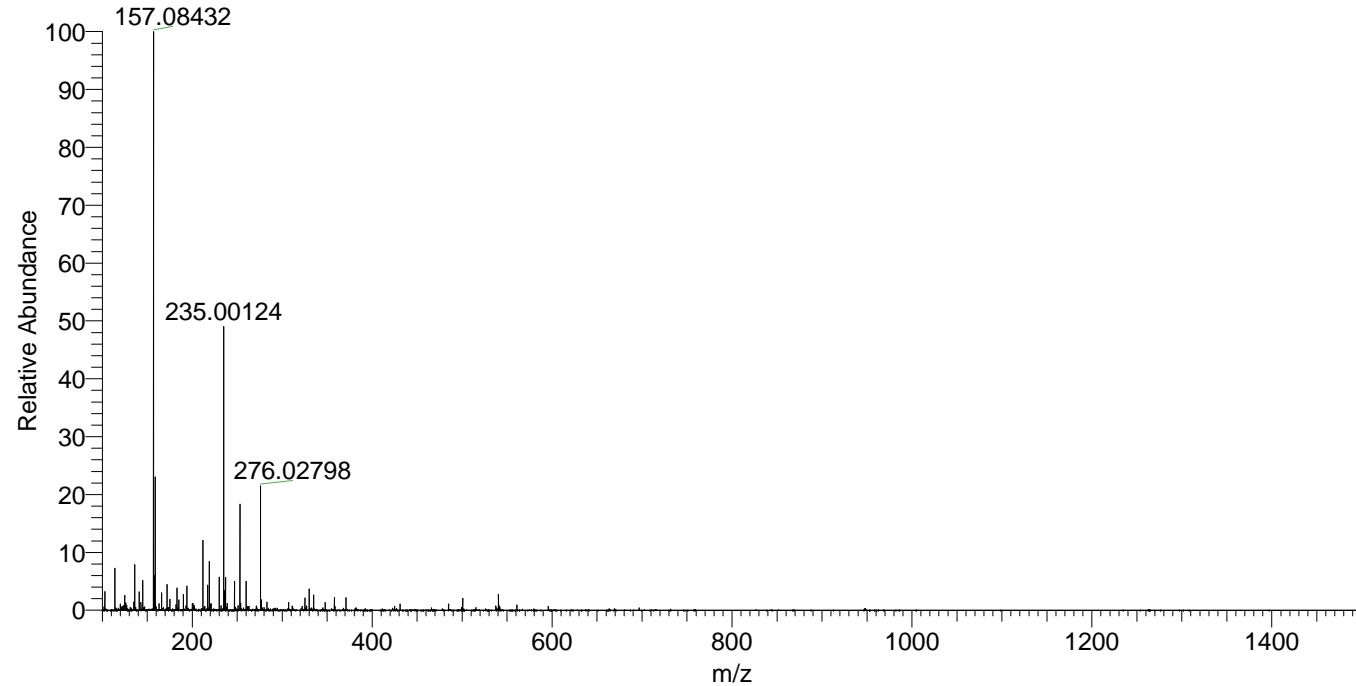
Apotteri_HDX#1523 RT: 9.39
T: FTMS + p ESI Full ms [100.00-1500.00]
m/z= 325.00000-326.00000

m/z	Intensity	Relative	Delta (ppm)	Composition
325.25195	439632.2	100.00	-0.33	C ₁₇ H ₂₃ ² H ₅ O ₂ N ₄
			4.43	C ₁₇ H ₂₁ ² H ₆ O ₂ N ₄



NL: 4.40E5
Base Peak m/z=
325.24943-325.25269 F:
FTMS + p ESI Full ms
[100.00-1500.00] MS
Apotteri_HDX

Apotteri_HDX #1523 RT: 9.39 AV: 1 NL: 2.01E7
T: FTMS + p ESI Full ms [100.00-1500.00]



NL: 0
Base Peak m/z=
163.63176-163.63340 F:
FTMS + p ESI Full ms
[100.00-1500.00] MS
Apotteri_HDX

Apotteri_HDX #1523 RT: 9.39 AV: 1 NL: 7.35E5
T: FTMS + p ESI Full ms [100.00-1500.00]

