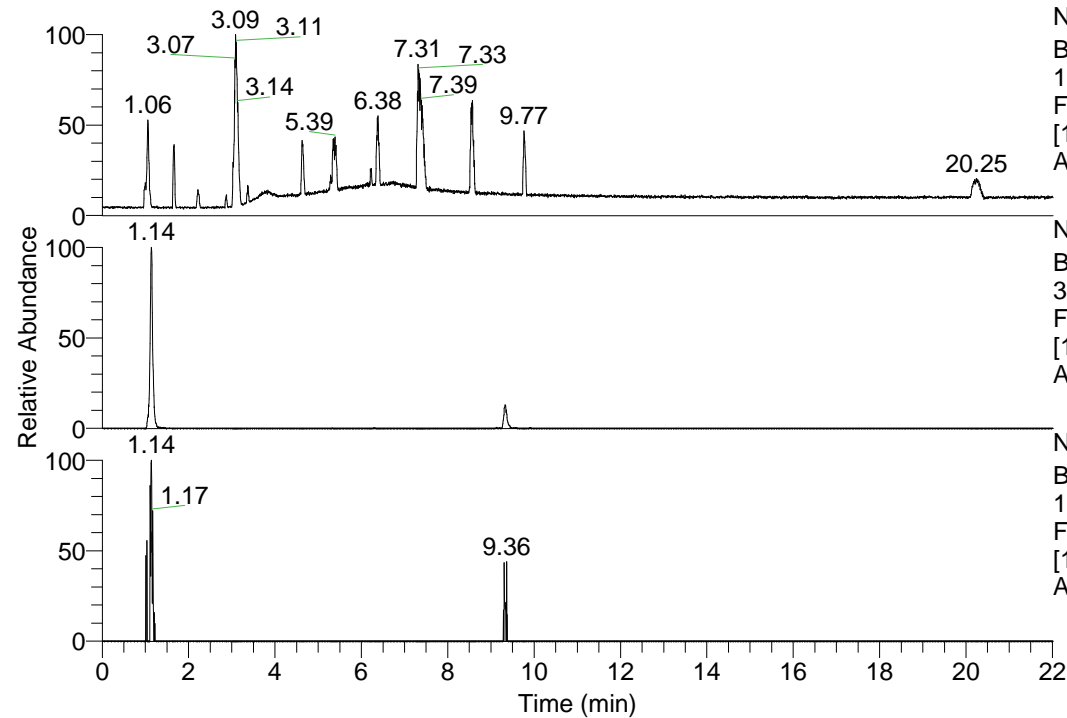


RT: 0.00 - 22.01



NL: 1.69E8
Base Peak m/z=
100.00000-1500.00000 F:
FTMS + p ESI Full ms
[100.00-1500.00] MS
Apotteri_HDX

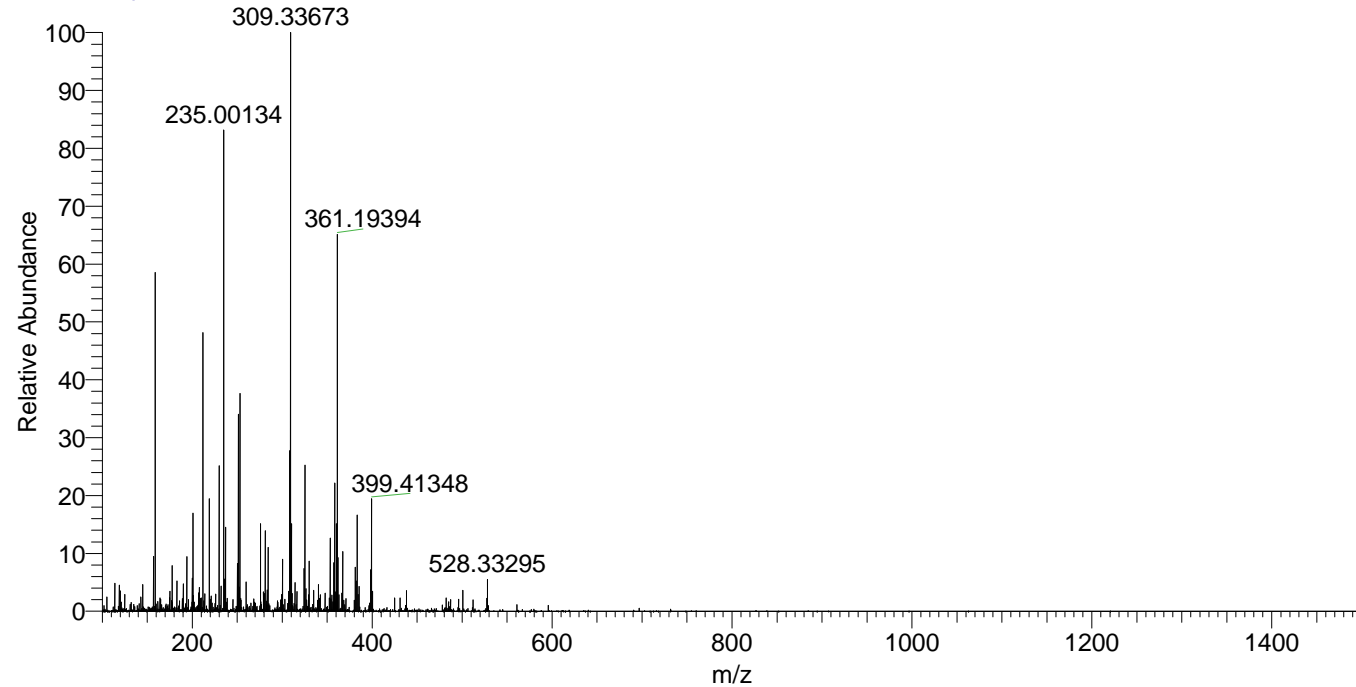
Apotteri_HDX#174 RT: 1.14
T: FTMS + p ESI Full ms [100.00-1500.00]
m/z= 325.00000-326.00000

m/z	Intensity	Relative	Delta (ppm)	Composition
325.33176	2320366.8	100.00	-0.25	C ₁₅ H ₃₁ ² H ₆ O ₂ N ₅
			4.51	C ₁₅ H ₂₉ ² H ₇ O ₂ N ₅

NL: 2.32E6
Base Peak m/z=
325.32921-325.33247 F:
FTMS + p ESI Full ms
[100.00-1500.00] MS
Apotteri_HDX

NL: 2.54E4
Base Peak m/z=
163.67165-163.67329 F:
FTMS + p ESI Full ms
[100.00-1500.00] MS
Apotteri_HDX

Apotteri_HDX #174 RT: 1.14 AV: 1 NL: 8.94E6
T: FTMS + p ESI Full ms [100.00-1500.00]



Apotteri_HDX #174 RT: 1.14 AV: 1 NL: 2.26E6
T: FTMS + p ESI Full ms [100.00-1500.00]

