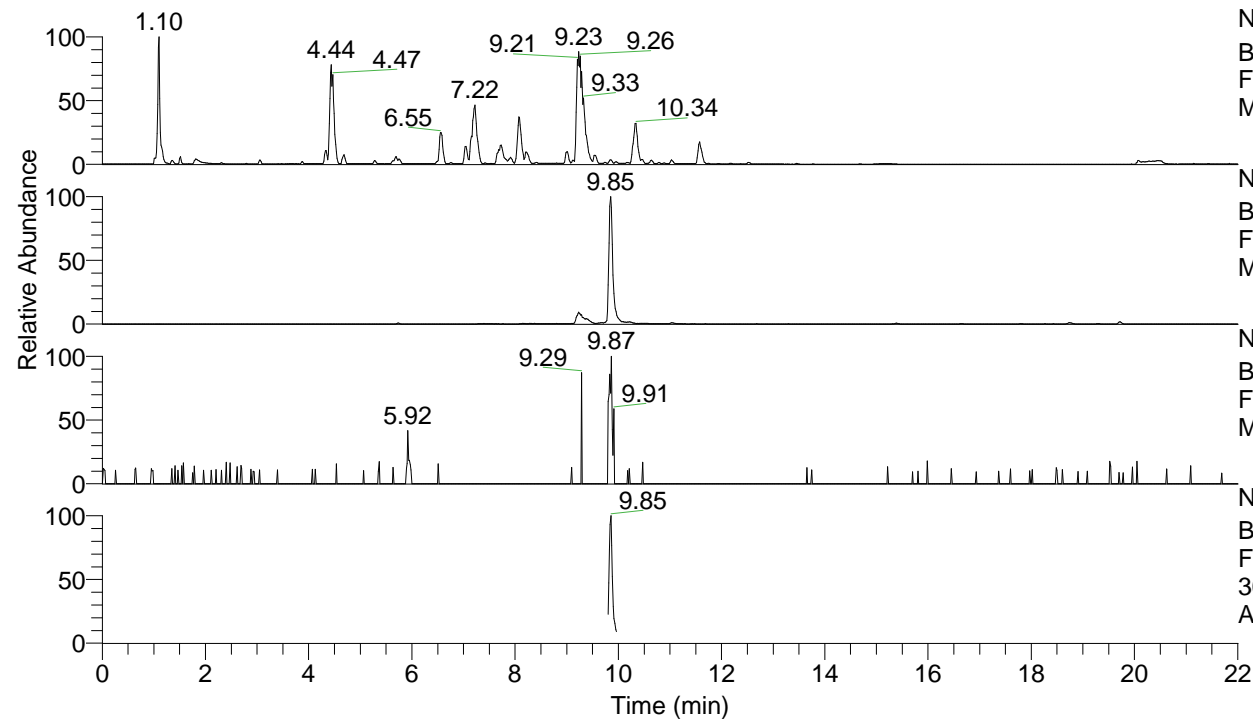


RT: 0.00 - 22.00



NL: 1.25E8
 Base Peak m/z= 100.00000-1500.00000 F:
 FTMS + p ESI Full ms [100.00-1500.00]
 MS Apotteri

NL: 4.60E6
 Base Peak m/z= 305.19622-305.19928 F:
 FTMS + p ESI Full ms [100.00-1500.00]
 MS Apotteri

NL: 1.01E4
 Base Peak m/z= 153.10202-153.10356 F:
 FTMS + p ESI Full ms [100.00-1500.00]
 MS Apotteri

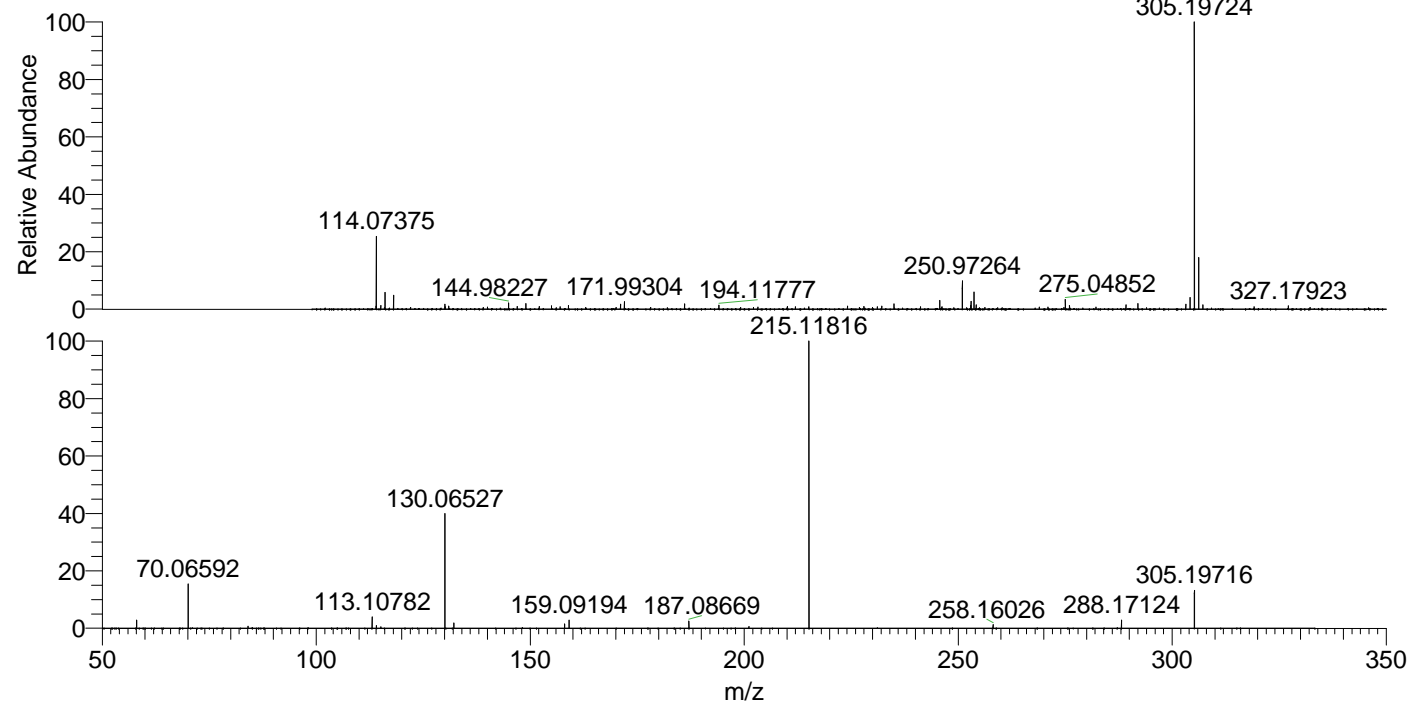
NL: 1.28E6
 Base Peak m/z= 50.00000-1500.00000 F:
 FTMS + p ESI d Full ms2
 305.20@hcd35.00 [50.00-330.00] MS
 Apotteri

Apotteri#3942-3980 RT: 9.80-9.90 AV: 8

F: FTMS + p ESI d Full ms2 305.20 ...

m/z= 50.00000-1000.00000

m/z	Intensity	Relative
58.06599	21245.1	2.87
70.06592	114574.5	15.48
84.08136	5197.2	0.70
113.10782	28916.2	3.91
114.09164	7502.8	1.01
130.06527	301428.7	40.72
132.14969	13848.5	1.87
158.06000	10893.5	1.47
159.09194	21172.1	2.86
187.08669	18578.4	2.51
201.10237	4298.6	0.58
215.11816	740224.8	100.00
258.16026	9887.4	1.34
288.17124	20940.6	2.83
305.19716	98752.6	13.34



NL: 4.31E6
 Apotteri#3961 RT: 9.85
 AV: 1 T: FTMS + p ESI
 Full ms [100.00-1500.00]

NL: 7.35E5
 Apotteri#3941-3983 RT:
 9.80-9.90 AV: 8 F: FTMS
 + p ESI d Full ms2
 305.20@hcd35.00
 [50.00-330.00]