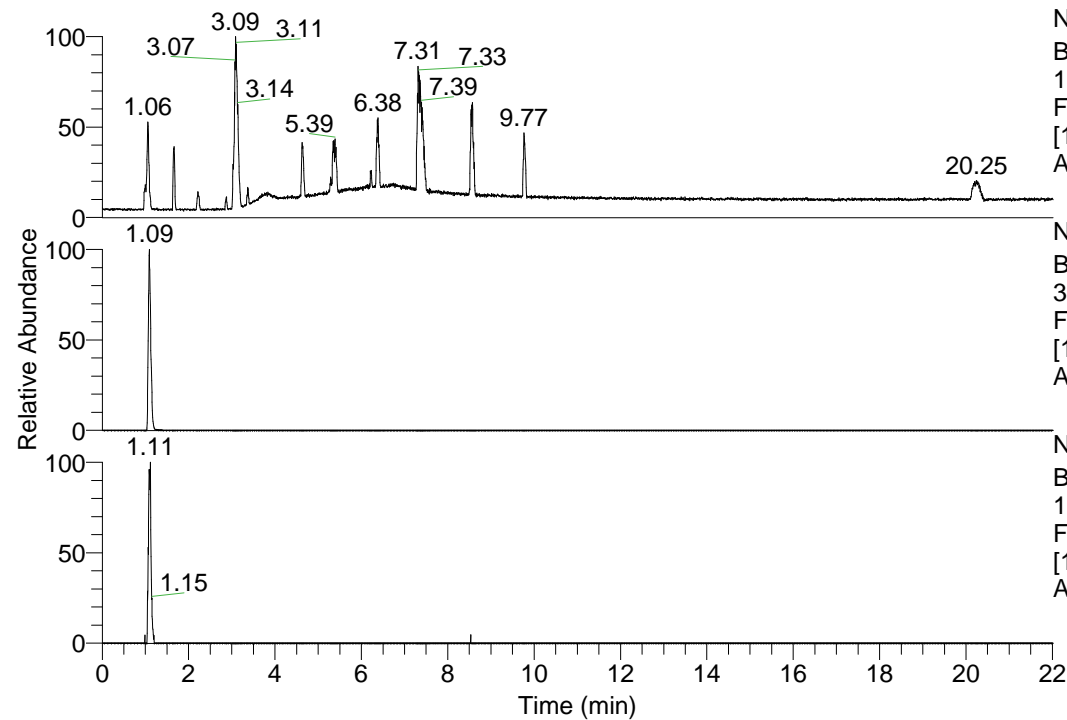


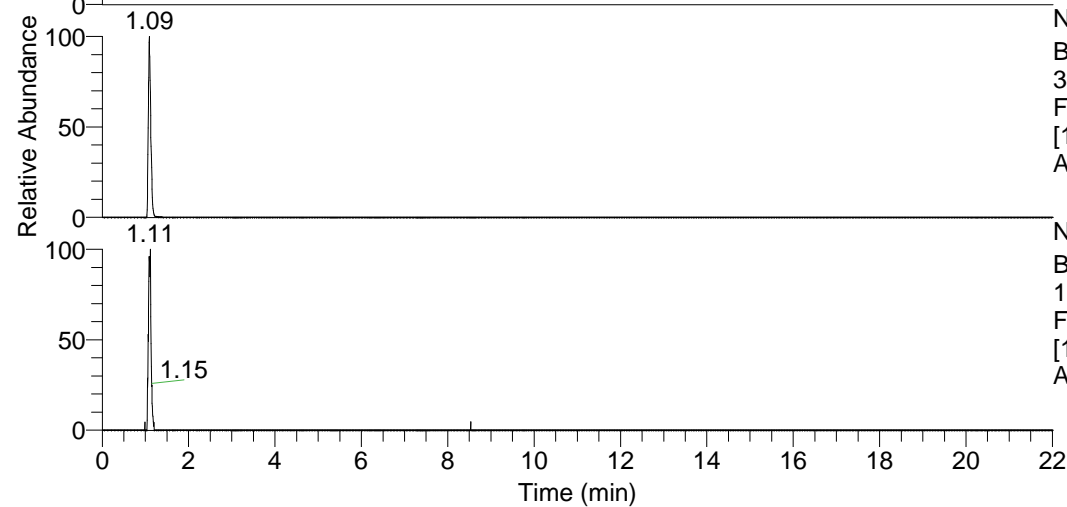
RT: 0.00 - 22.01



NL: 1.69E8
 Base Peak m/z=
 100.00000-1500.00000 F:
 FTMS + p ESI Full ms
 [100.00-1500.00] MS
 Apotteri_HDX

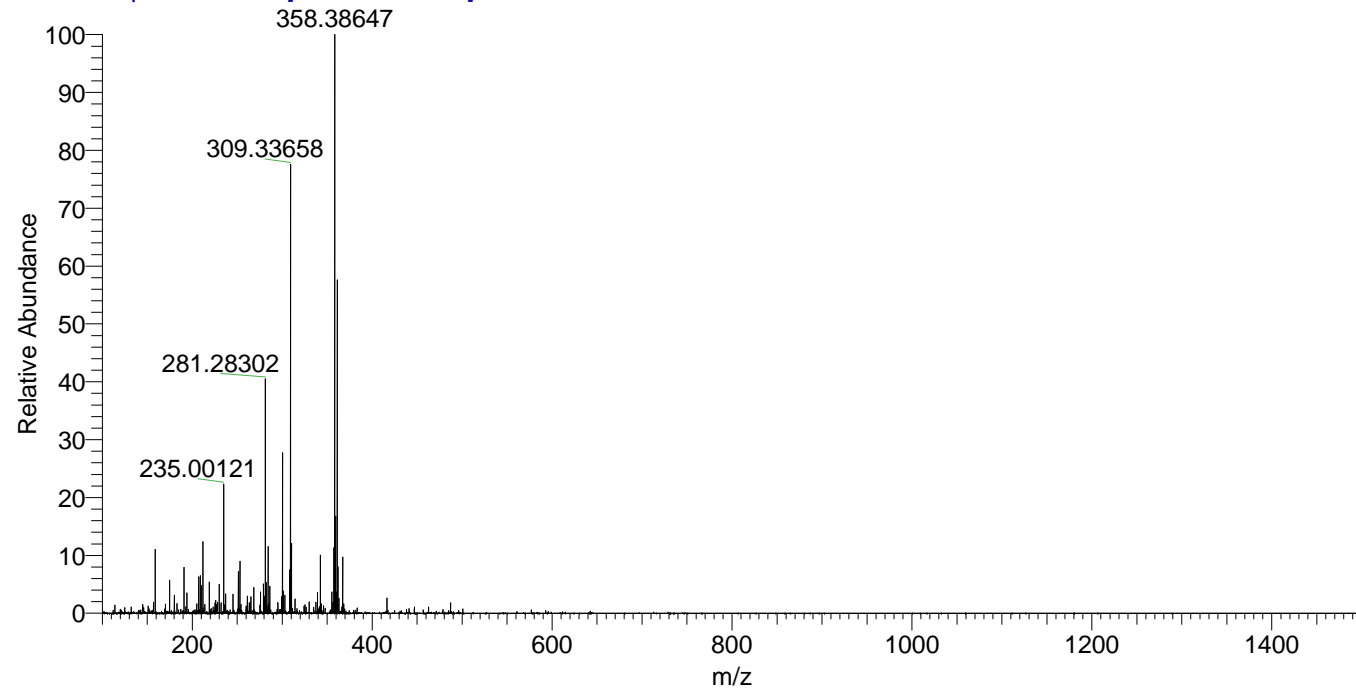
Apotteri_HDX#166 RT: 1.09
 T: FTMS + p ESI Full ms [100.00-1500.00]
 m/z= 309.00000-310.00000

m/z	Intensity	Relative	Delta (ppm)	Composition
309.33658	26497312.0	100.00	-1.11	C ₁₅ H ₃₁ ² H ₆ ON ₅
			3.89	C ₁₅ H ₂₉ ² H ₇ ON ₅



NL: 2.65E7
 Base Peak m/z=
 309.33437-309.33747 F:
 FTMS + p ESI Full ms
 [100.00-1500.00] MS
 Apotteri_HDX

Apotteri_HDX #166 RT: 1.09 AV: 1 NL: 3.38E7
 T: FTMS + p ESI Full ms [100.00-1500.00]



Apotteri_HDX #166 RT: 1.09 AV: 1 NL: 2.62E7
 T: FTMS + p ESI Full ms [100.00-1500.00]

