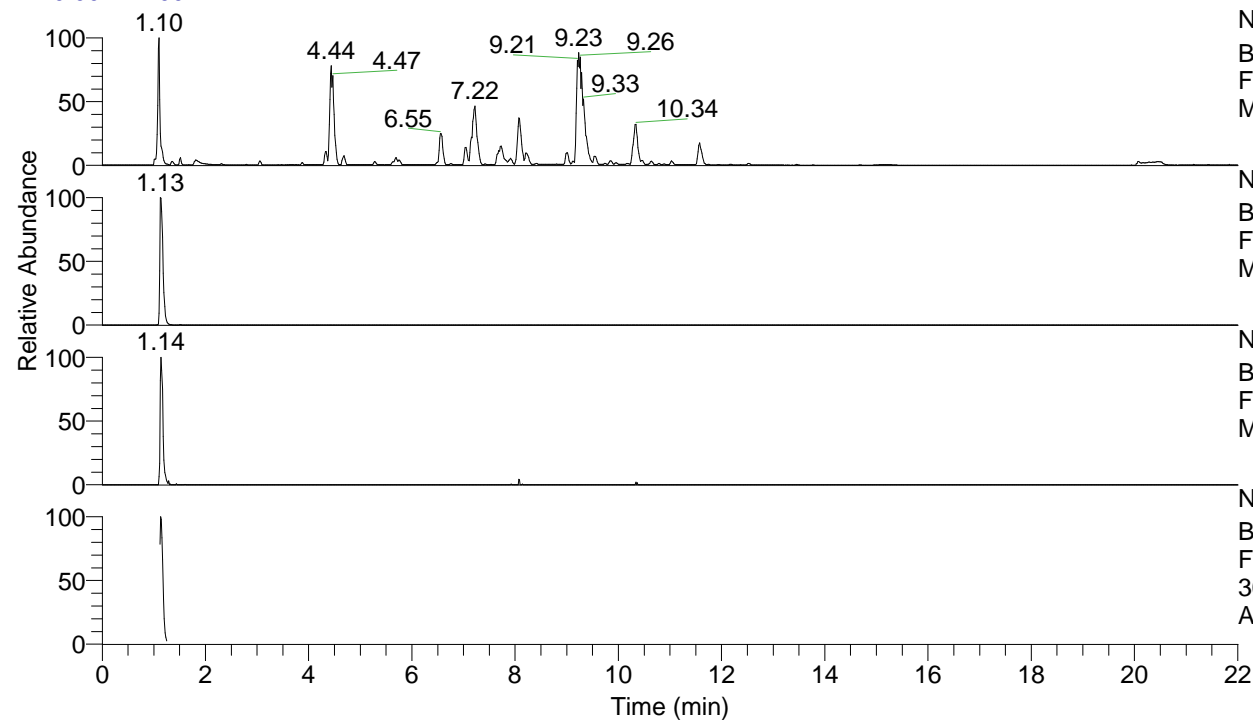


RT: 0.00 - 22.00



NL: 1.25E8
 Base Peak m/z= 100.00000-1500.00000 F:
 FTMS + p ESI Full ms [100.00-1500.00]
 MS Apotteri

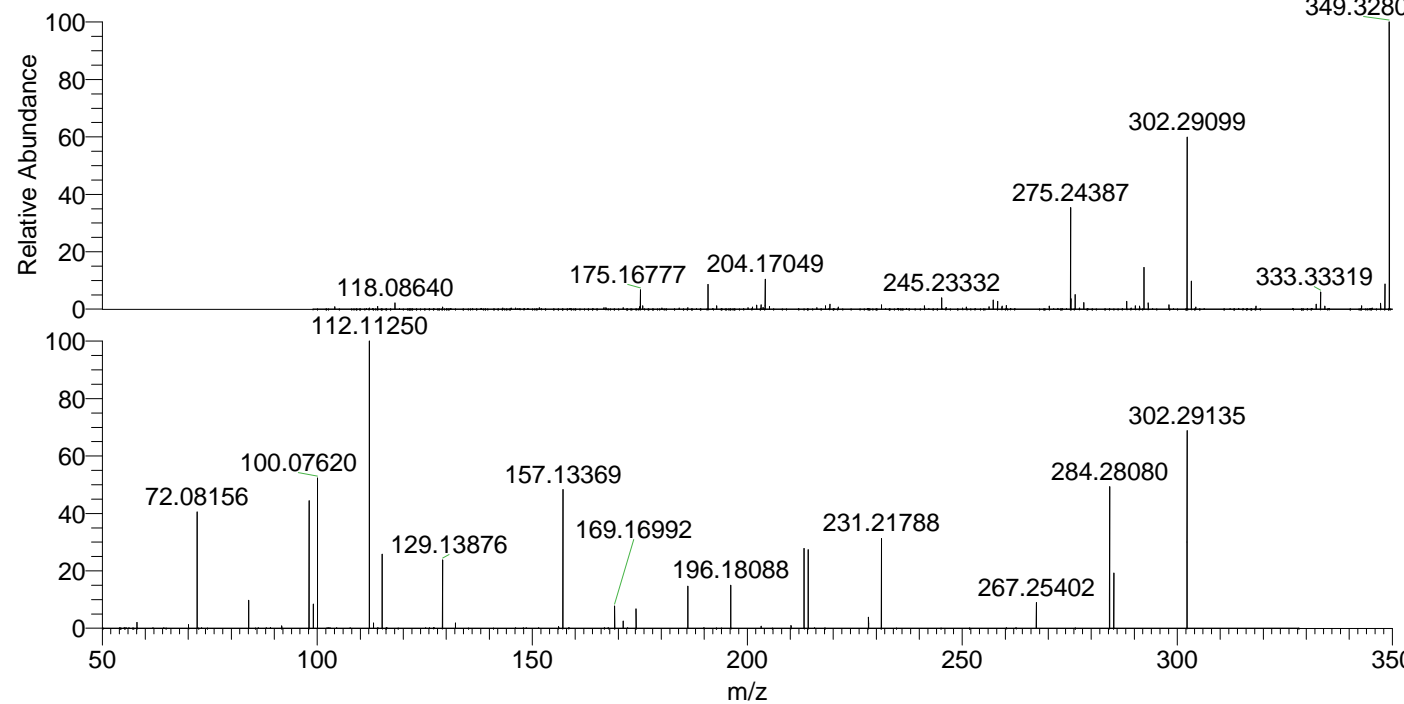
NL: 1.90E7
 Base Peak m/z= 302.29048-302.29350 F:
 FTMS + p ESI Full ms [100.00-1500.00]
 MS Apotteri

NL: 1.94E5
 Base Peak m/z= 151.64915-151.65067 F:
 FTMS + p ESI Full ms [100.00-1500.00]
 MS Apotteri

NL: 1.75E6
 Base Peak m/z= 50.00000-1500.00000 F:
 FTMS + p ESI d Full ms2
 302.29@hcd35.00 [50.00-325.00] MS
 Apotteri

Apotteri#454-488 RT: 1.12-1.20 AV: 7
 F: FTMS + p ESI d Full ms2 302.29@h ...
 m/z= 50.00000-1000.00000

m/z	Intensity	Relative
58.06595	22752.6	2.03
70.06588	13814.6	1.23
72.08156	462033.7	41.16
84.08139	109647.8	9.77
91.75612	9936.7	0.89
98.09699	507719.5	45.23
99.09214	93891.9	8.36
100.07620	583675.9	52.00
112.11250	1122519.6	100.00
113.10758	20541.4	1.83
115.12336	290595.7	25.89
129.10217	6301.2	0.56
129.13876	273544.1	24.37
132.14955	20995.1	1.87
156.14982	6934.5	0.62
157.13369	549394.1	48.94
169.16992	86270.8	7.69
171.14899	28054.1	2.50
174.15995	75070.6	6.69
186.19654	163445.6	14.56
196.18088	167436.0	14.92
203.22342	8263.2	0.74
210.19657	10667.9	0.95
213.20729	311089.4	27.71
214.19134	305615.3	27.23
228.20725	42818.7	3.81
231.21788	361025.8	32.16
267.25402	101498.0	9.04
284.28080	550160.3	49.01
285.26485	216137.8	19.25
302.29135	768174.6	68.43



NL: 3.17E7
 Apotteri#457 RT: 1.13
 AV: 1 T: FTMS + p ESI
 Full ms [100.00-1500.00]

NL: 1.12E6
 Apotteri#446-493 RT:
 1.12-1.20 AV: 7 F: FTMS
 + p ESI d Full ms2
 302.29@hcd35.00
 [50.00-325.00]