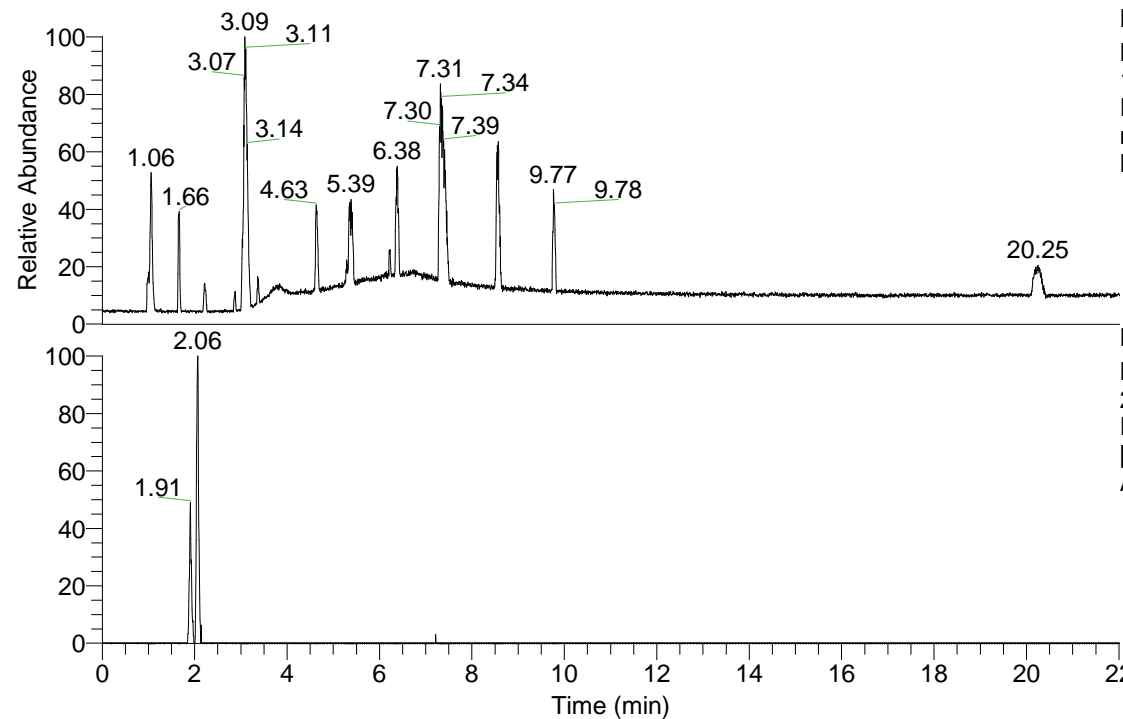


RT: 0.00 - 22.01



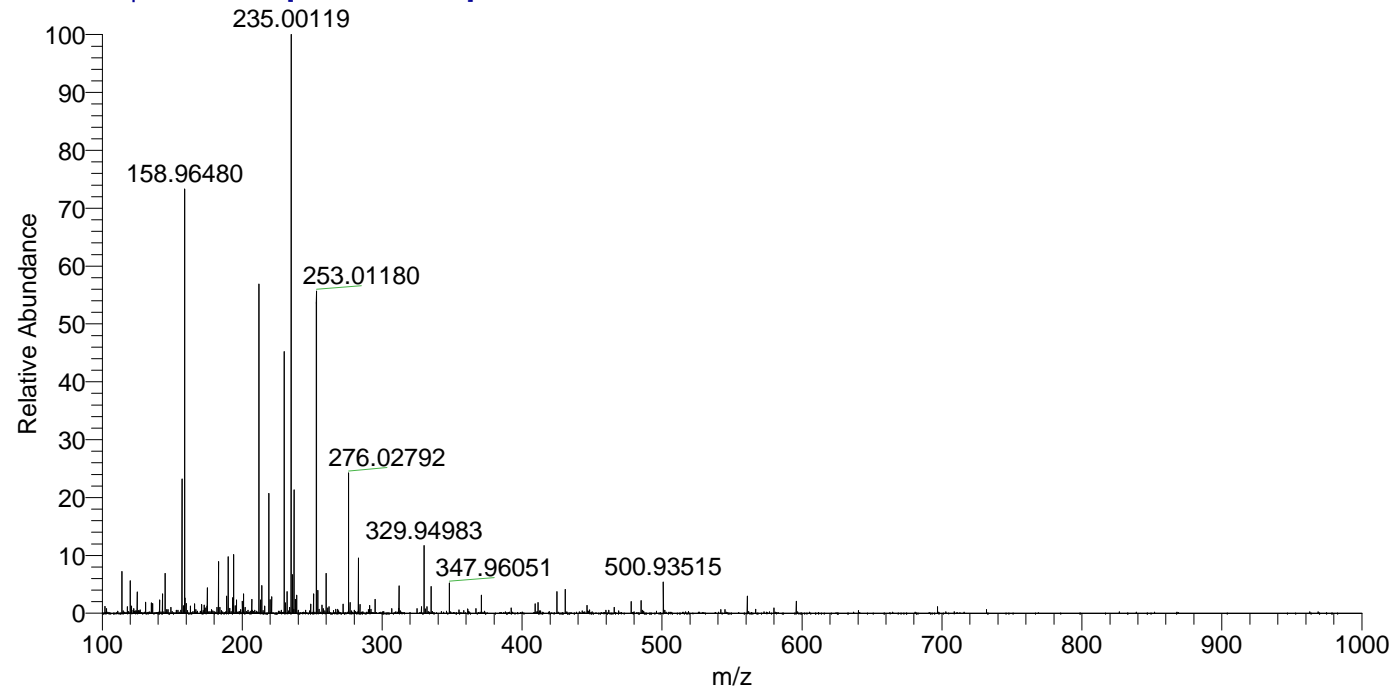
NL: 1.69E8  
 Base Peak m/z= 100.00000-1500.00000  
 F: FTMS + p ESI Full ms [100.00-1500.00]  
 MS Apotteri\_HDX

Apotteri\_HDX#314 RT: 2.06  
 T: FTMS + p ESI Full ms [100.00-1500.00]  
 m/z= 291.00000-292.00000

m/z	Intensity	Relative	Delta (ppm)	Composition
291.14404	101982.0	100.00	-1.33	C <sub>10</sub> H <sub>9</sub> <sup>2</sup> H <sub>6</sub> O <sub>5</sub> N <sub>5</sub>
			3.99	C <sub>10</sub> H <sub>7</sub> <sup>2</sup> H <sub>7</sub> O <sub>5</sub> N <sub>5</sub>

NL: 1.05E5  
 Base Peak m/z= 291.14197-291.14489 F:  
 FTMS + p ESI Full ms [100.00-1500.00] MS  
 Apotteri\_HDX

Apotteri\_HDX #314 RT: 2.06 AV: 1 NL: 7.36E6  
 T: FTMS + p ESI Full ms [100.00-1500.00]



Apotteri\_HDX #314 RT: 2.06 AV: 1 NL: 1.78E5  
 T: FTMS + p ESI Full ms [100.00-1500.00]

