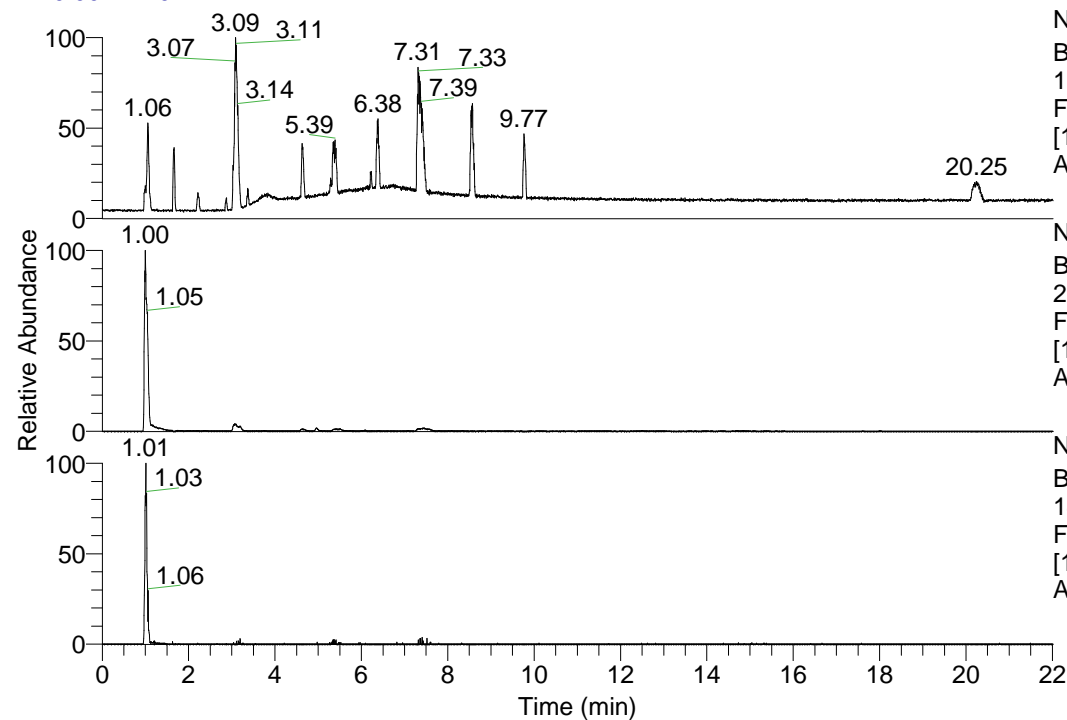


RT: 0.00 - 22.01



NL: 1.69E8
Base Peak m/z=
100.00000-1500.00000 F:
FTMS + p ESI Full ms
[100.00-1500.00] MS
Apotteri_HDX

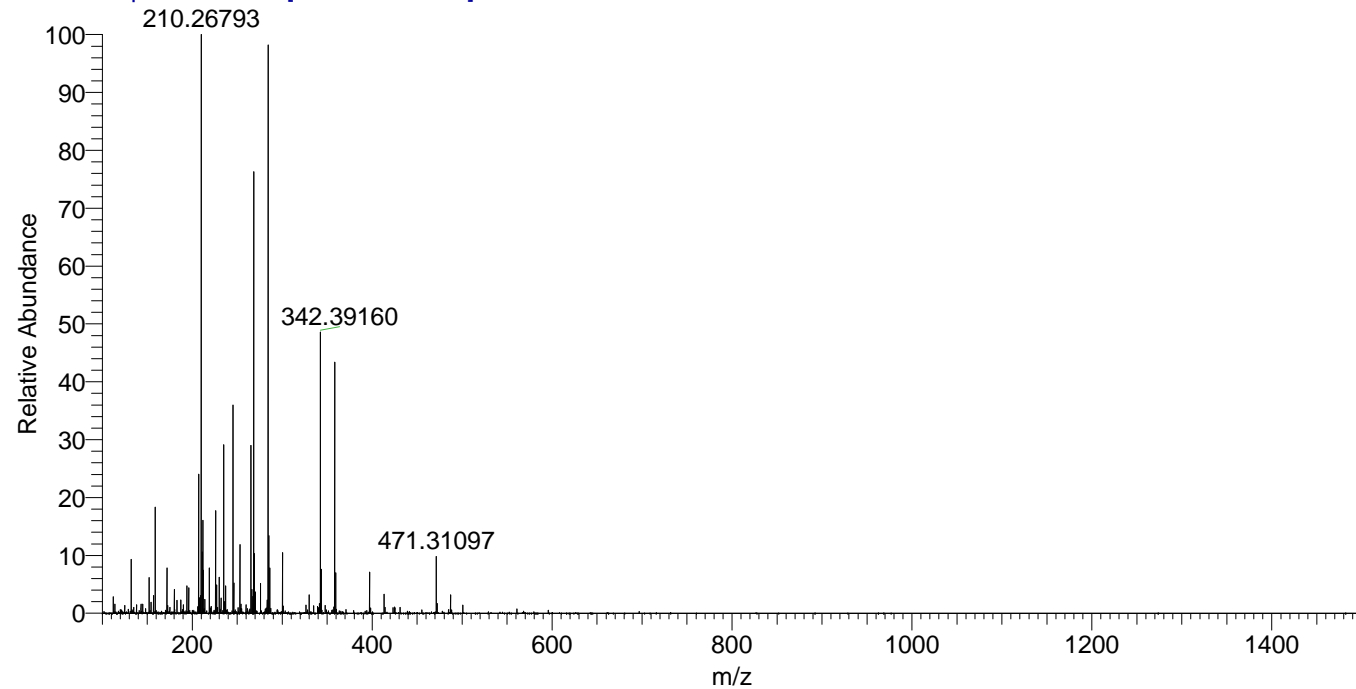
Apotteri_HDX#149 RT: 1.00
T: FTMS + p ESI Full ms [100.00-1500.00]
m/z= 284.00000-285.00000

m/z	Intensity	Relative	Delta (ppm)	Composition
284.32715	29323736.0	100.00	-1.41	C ₁₃ H ₂₈ ² H ₇ ON ₅
			4.03	C ₁₃ H ₂₆ ² H ₈ ON ₅

NL: 2.93E7
Base Peak m/z=
284.32513-284.32797 F:
FTMS + p ESI Full ms
[100.00-1500.00] MS
Apotteri_HDX

NL: 5.75E5
Base Peak m/z=
143.16961-143.17105 F:
FTMS + p ESI Full ms
[100.00-1500.00] MS
Apotteri_HDX

Apotteri_HDX #149 RT: 1.00 AV: 1 NL: 2.98E7
T: FTMS + p ESI Full ms [100.00-1500.00]



Apotteri_HDX #149 RT: 1.00 AV: 1 NL: 2.93E7
T: FTMS + p ESI Full ms [100.00-1500.00]

