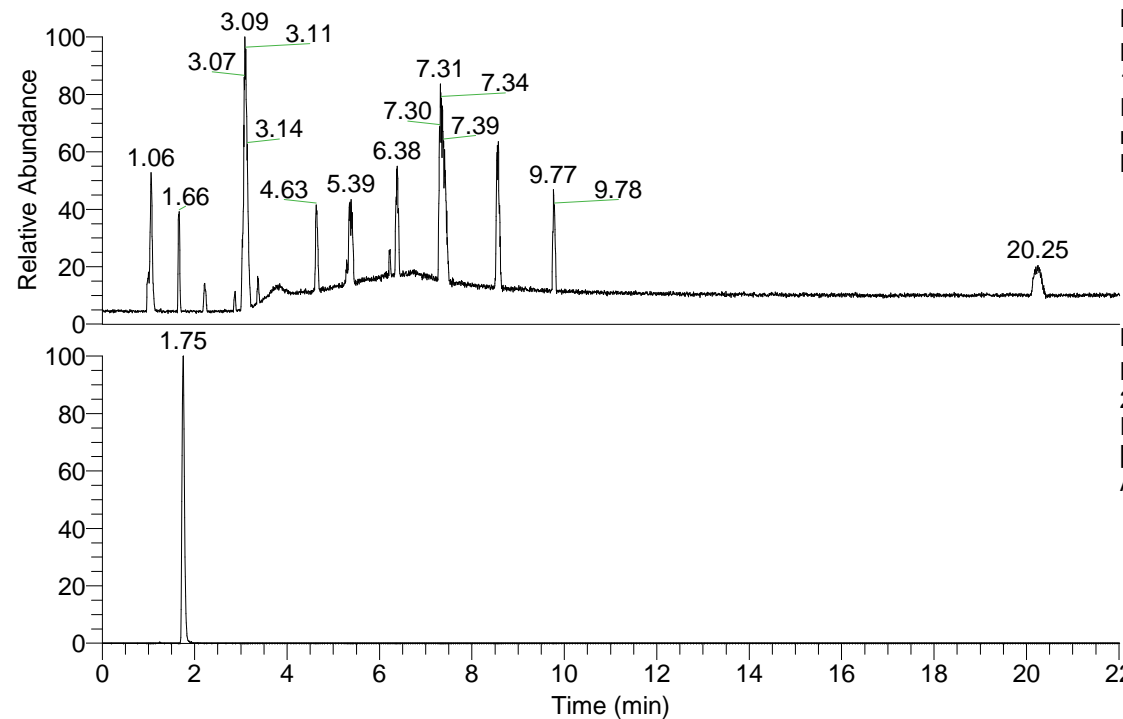


RT: 0.00 - 22.01



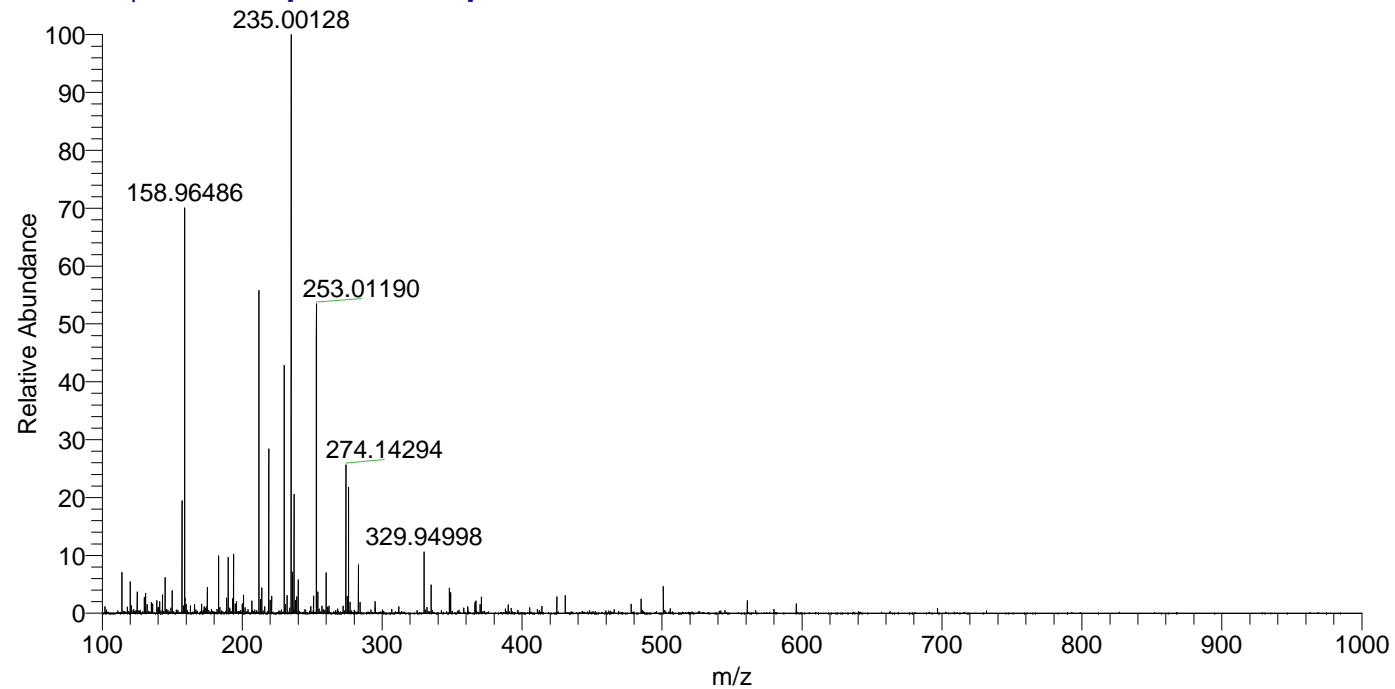
NL: 1.69E8
 Base Peak m/z= 100.00000-1500.00000
 F: FTMS + p ESI Full ms [100.00-1500.00]
 MS Apotteri_HDX

Apotteri_HDX#268 RT: 1.75
 T: FTMS + p ESI Full ms [100.00-1500.00]
 m/z= 274.00000-275.00000

m/z	Intensity	Relative	Delta (ppm)	Composition
274.14294	1886076.1	100.00	4.57	C ₁₀ H ₈ ² H ₆ O ₄ N ₅

NL: 1.89E6
 Base Peak m/z= 274.14087-274.14361
 F: FTMS + p ESI Full ms [100.00-1500.00]
 MS Apotteri_HDX

Apotteri_HDX #268 RT: 1.75 AV: 1 NL: 7.24E6
 T: FTMS + p ESI Full ms [100.00-1500.00]



Apotteri_HDX #268 RT: 1.75 AV: 1 NL: 1.86E6
 T: FTMS + p ESI Full ms [100.00-1500.00]

