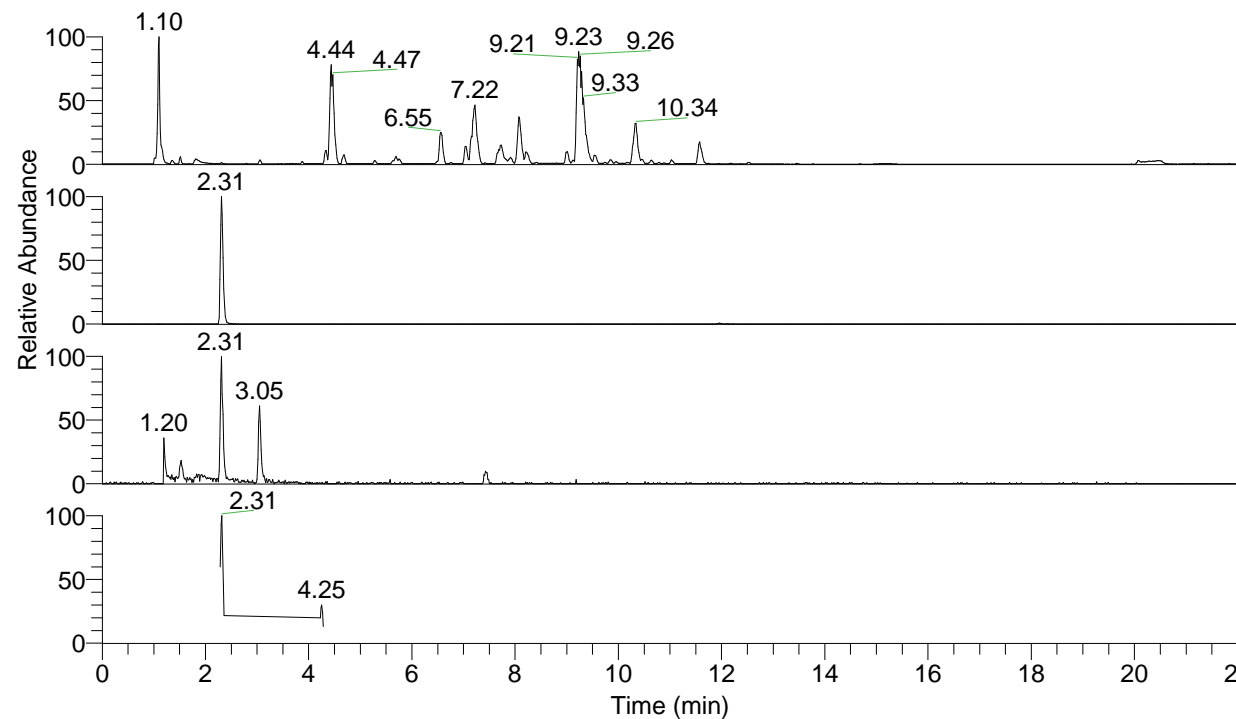


RT: 0.00 - 22.00



NL: 1.25E8
 Base Peak m/z= 100.00000-1500.00000 F:
 FTMS + p ESI Full ms [100.00-1500.00]
 MS Apotteri

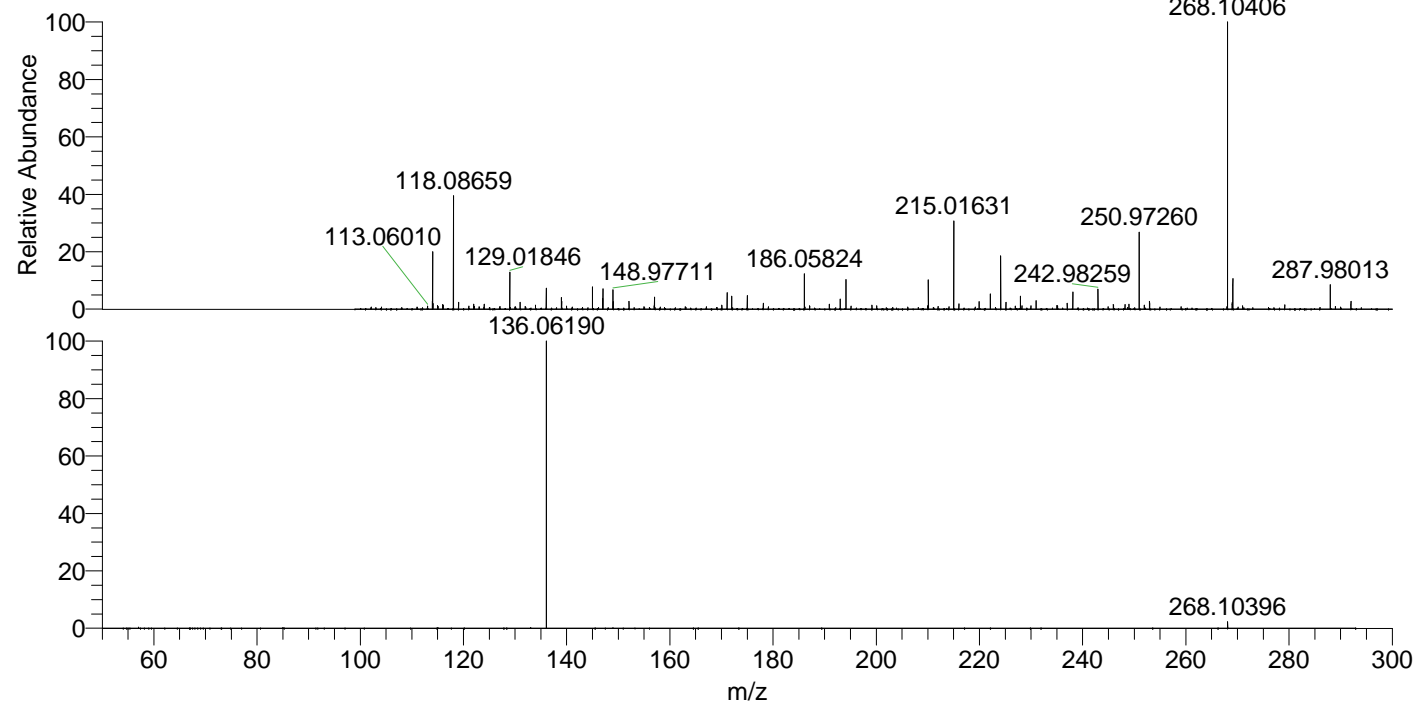
NL: 1.66E6
 Base Peak m/z= 268.10323-268.10591 F:
 FTMS + p ESI Full ms [100.00-1500.00]
 MS Apotteri

NL: 1.20E5
 Base Peak m/z= 136.06164-136.06300 F:
 FTMS + p ESI Full ms [100.00-1500.00]
 MS Apotteri

NL: 1.07E6
 Base Peak m/z= 50.00000-1500.00000 F:
 FTMS + p ESI d Full ms2
 268.10@hcd35.00 [50.00-290.00] MS
 Apotteri

Apotteri#922-944 RT: 2.29-2.34 AV: 5
 F: FTMS + p ESI d Full ms2 268.10 ...
 m/z= 50.00000-1000.00000

m/z	Intensity	Relative
136.06190	768439.9	100.00
268.10396	17958.8	2.34



NL: 1.65E6
 Apotteri#931 RT: 2.31
 AV: 1 T: FTMS + p ESI
 Full ms [100.00-1500.00]

NL: 7.65E5
 Apotteri#920-949 RT:
 2.29-2.34 AV: 5 F: FTMS
 + p ESI d Full ms2
 268.10@hcd35.00
 [50.00-290.00]