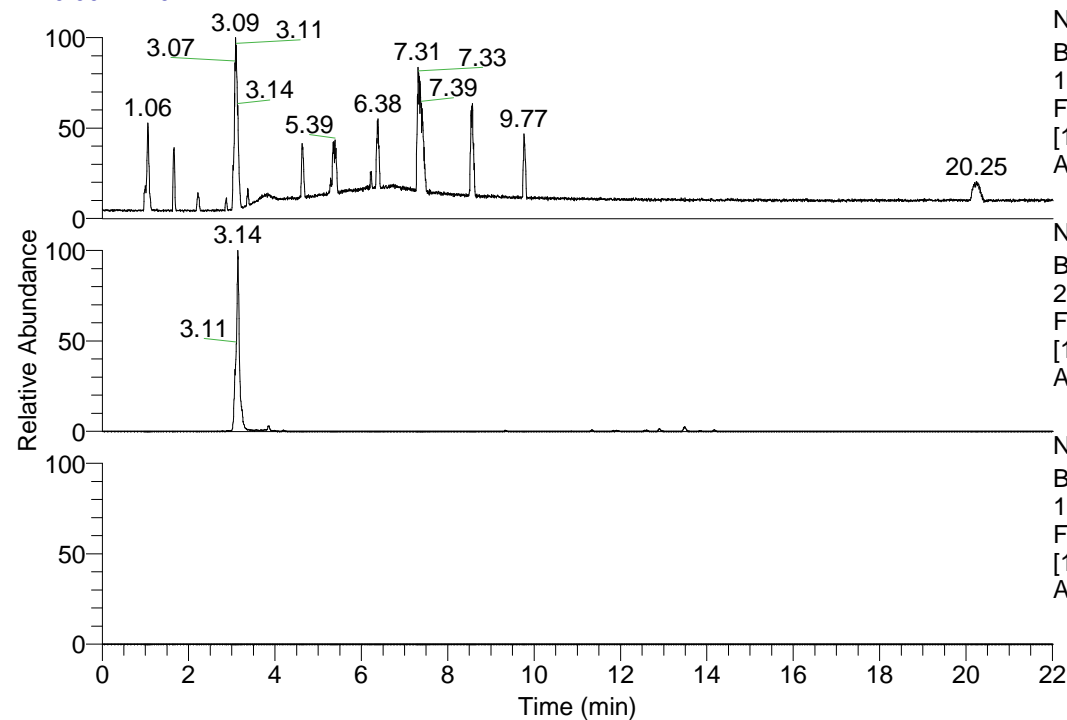


RT: 0.00 - 22.01



NL: 1.69E8
 Base Peak m/z=
 100.00000-1500.00000 F:
 FTMS + p ESI Full ms
 [100.00-1500.00] MS
 Apotteri_HDX

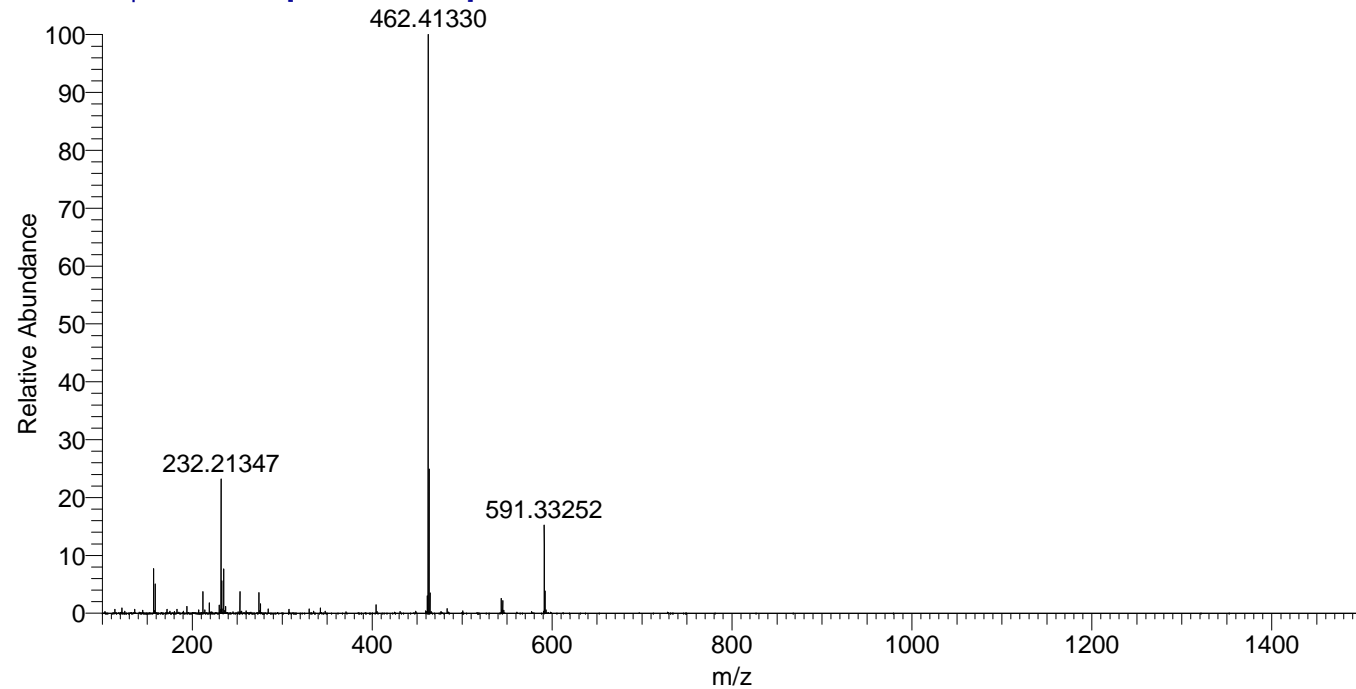
Apotteri_HDX#483 RT: 3.14
 T: FTMS + p ESI Full ms [100.00-1500.00]
 m/z= 274.00000-275.00000

m/z	Intensity	Relative	Delta (ppm)	Composition
274.20438	3822275.0	100.00	-1.46	C ₁₃ H ₁₈ ² H ₅ O ₃ N ₃
			4.19	C ₁₃ H ₁₆ ² H ₆ O ₃ N ₃

NL: 3.82E6
 Base Peak m/z=
 274.20241-274.20515 F:
 FTMS + p ESI Full ms
 [100.00-1500.00] MS
 Apotteri_HDX

NL: 0
 Base Peak m/z=
 138.10825-138.10963 F:
 FTMS + p ESI Full ms
 [100.00-1500.00] MS
 Apotteri_HDX

Apotteri_HDX #483 RT: 3.14 AV: 1 NL: 1.06E8
 T: FTMS + p ESI Full ms [100.00-1500.00]



Apotteri_HDX #483 RT: 3.14 AV: 1 NL: 3.77E6
 T: FTMS + p ESI Full ms [100.00-1500.00]

