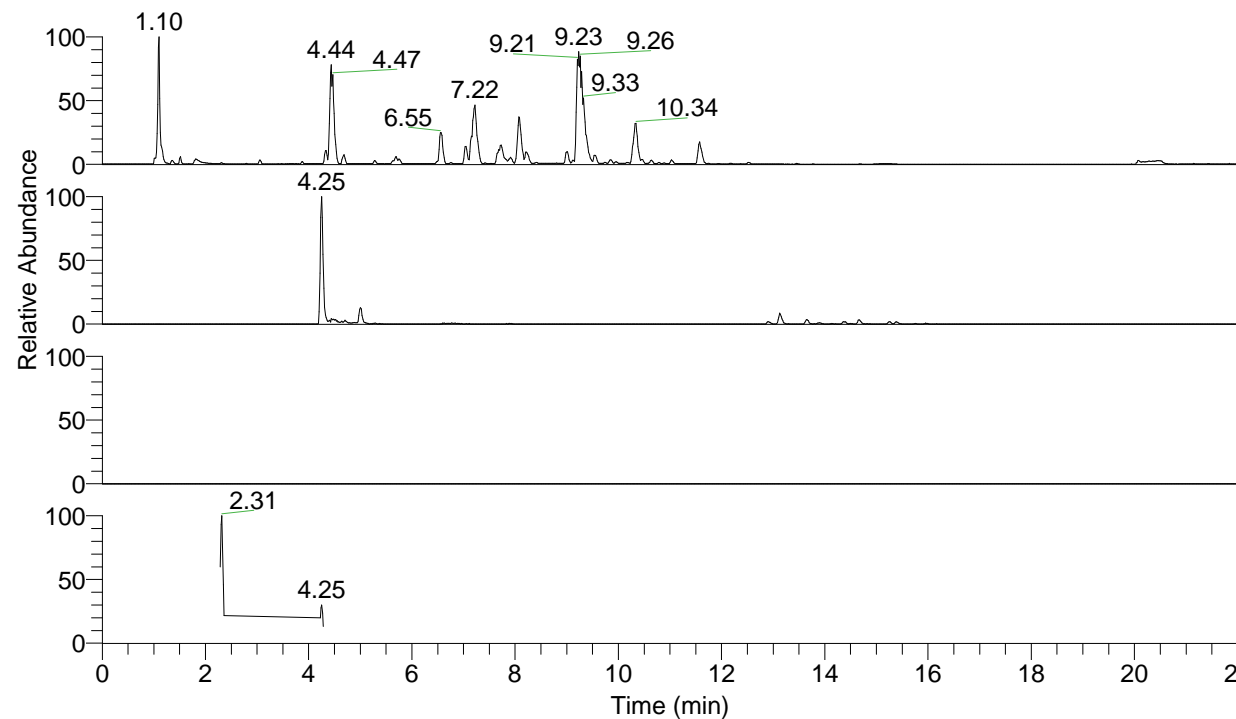


RT: 0.00 - 22.00



NL: 1.25E8  
 Base Peak m/z= 100.00000-1500.00000 F:  
 FTMS + p ESI Full ms [100.00-1500.00]  
 MS Apotteri

NL: 9.25E5  
 Base Peak m/z= 268.16478-268.16746 F:  
 FTMS + p ESI Full ms [100.00-1500.00]  
 MS Apotteri

NL: 0  
 Base Peak m/z= 134.58630-134.58764 F:  
 FTMS + p ESI Full ms [100.00-1500.00]  
 MS Apotteri

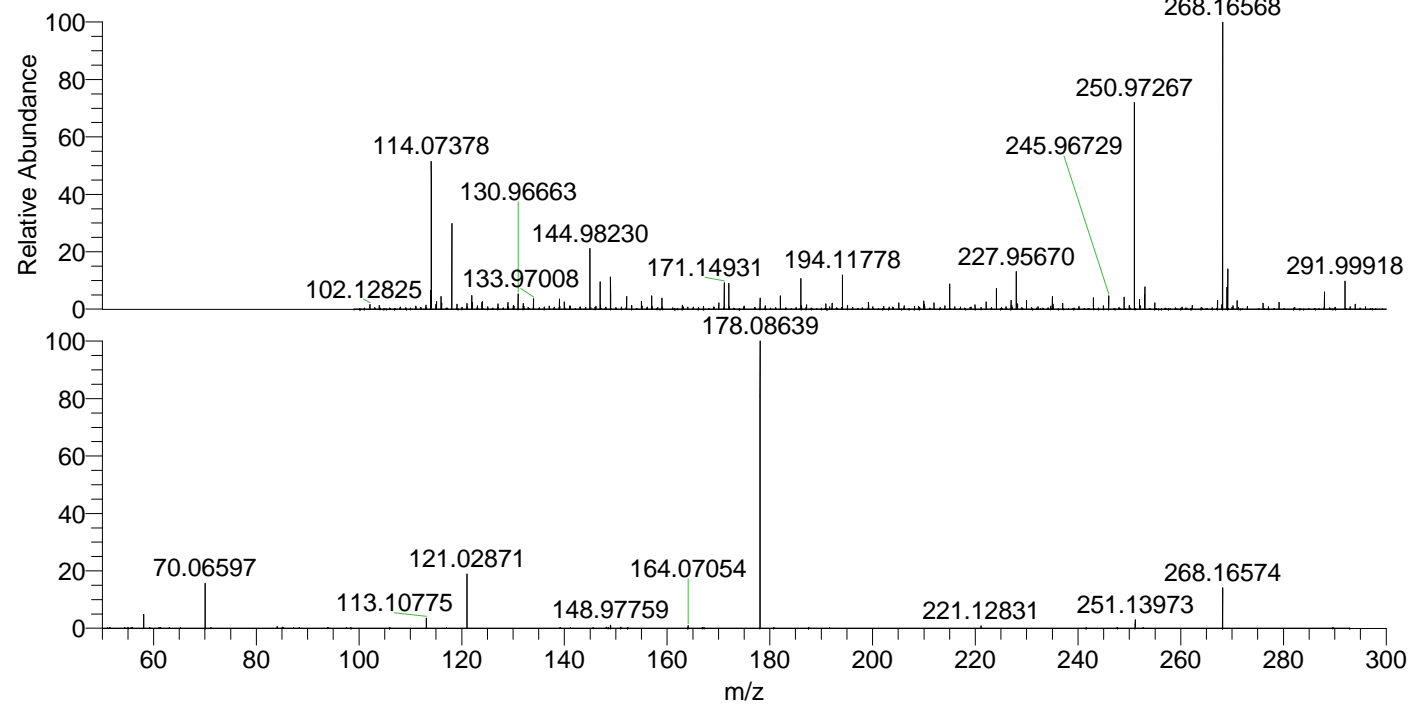
NL: 1.07E6  
 Base Peak m/z= 50.00000-1500.00000 F:  
 FTMS + p ESI d Full ms2  
 268.10@hcd35.00 [50.00-290.00] MS  
 Apotteri

Apotteri#1696-1712 RT: 4.23-4.27 AV: 4

F: FTMS + p ESI d Full ms2 268.10 ...

m/z= 50.00000-1000.00000

m/z	Intensity	Relative
58.06598	12789.3	4.83
70.06597	41782.1	15.78
84.08203	1624.1	0.61
113.10775	9525.2	3.60
121.02871	50845.6	19.20
148.97759	2691.2	1.02
164.07054	2571.6	0.97
178.08639	264841.6	100.00
221.12831	2231.0	0.84
251.13973	7711.9	2.91
268.16574	38543.3	14.55



NL: 9.25E5  
 Apotteri#1705 RT: 4.25  
 AV: 1 T: FTMS + p ESI  
 Full ms [100.00-1500.00]

NL: 2.65E5  
 Apotteri#1694-1717 RT:  
 4.23-4.27 AV: 4 F: FTMS  
 + p ESI d Full ms2  
 268.10@hcd35.00  
 [50.00-290.00]