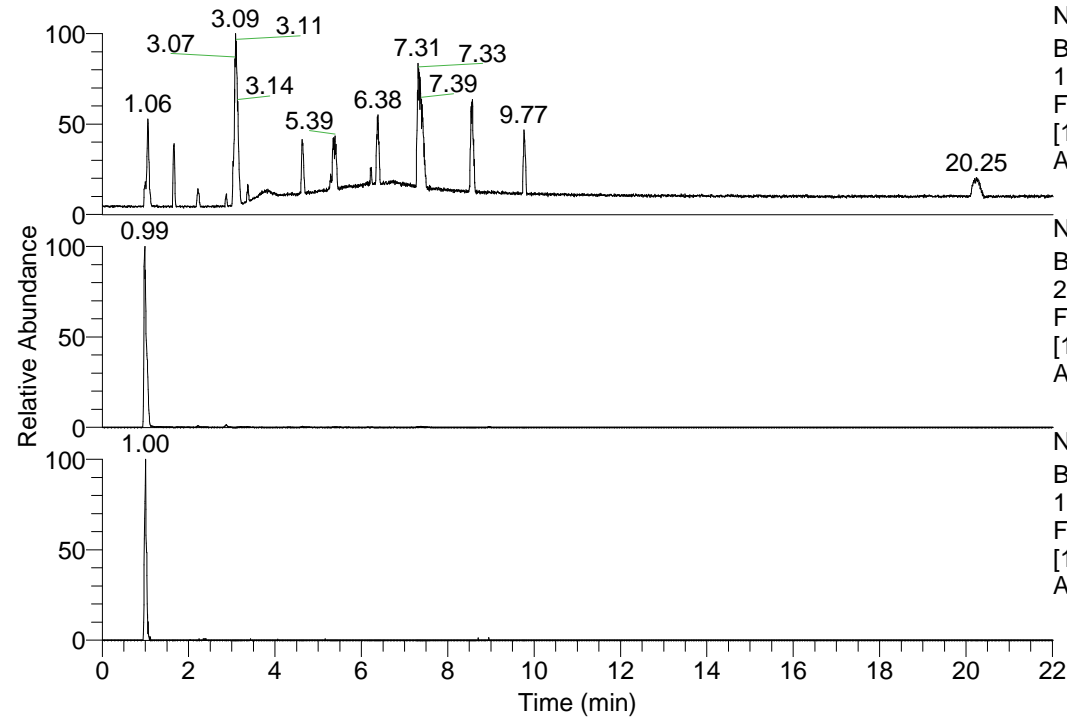


RT: 0.00 - 22.01



NL: 1.69E8
Base Peak m/z=
100.00000-1500.00000 F:
FTMS + p ESI Full ms
[100.00-1500.00] MS
Apotteri_HDX

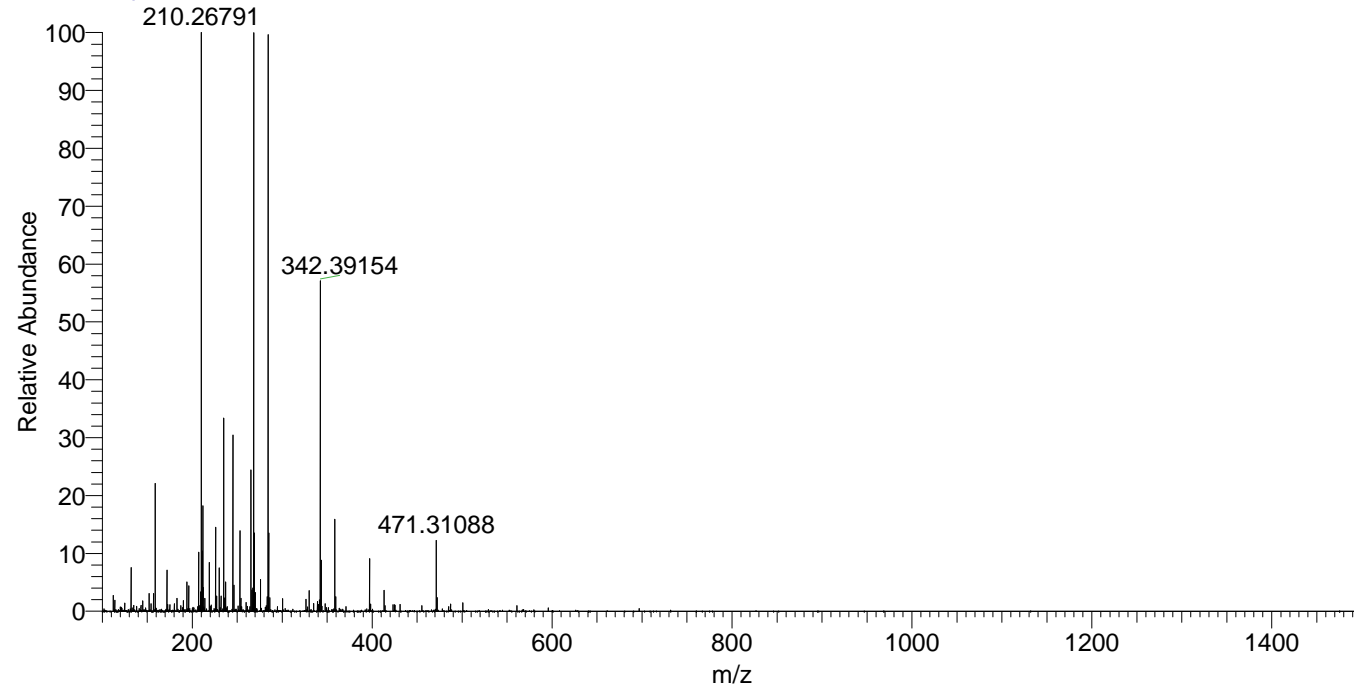
NL: 2.62E7
Base Peak m/z=
268.33030-268.33298 F:
FTMS + p ESI Full ms
[100.00-1500.00] MS
Apotteri_HDX

NL: 3.72E5
Base Peak m/z=
135.17219-135.17355 F:
FTMS + p ESI Full ms
[100.00-1500.00] MS
Apotteri_HDX

Apotteri_HDX#148 RT: 0.99
T: FTMS + p ESI Full ms [100.00-1500.00]
m/z= 268.00000-269.00000

m/z	Intensity	Relative	Delta (ppm)	Composition
268.33218	21484446.0	100.00	-1.68	C ₁₃ H ₂₈ ² H ₇ N ₅
			4.09	C ₁₃ H ₂₆ ² H ₈ N ₅
			9.86	C ₁₃ H ₂₄ ² H ₉ N ₅

Apotteri_HDX #147 RT: 0.99 AV: 1 NL: 2.61E7
T: FTMS + p ESI Full ms [100.00-1500.00]



Apotteri_HDX #148 RT: 0.99 AV: 1 NL: 2.14E7
T: FTMS + p ESI Full ms [100.00-1500.00]

