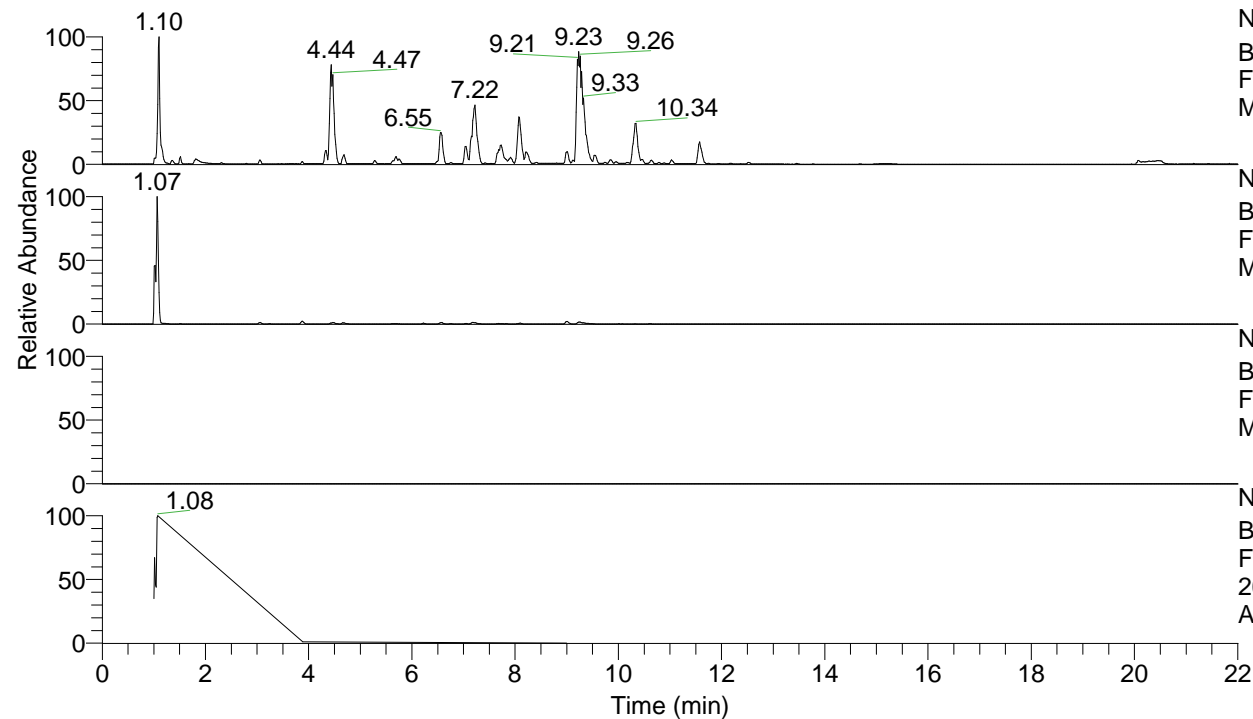


RT: 0.00 - 22.00



NL: 1.25E8
 Base Peak m/z= 100.00000-1500.00000 F:
 FTMS + p ESI Full ms [100.00-1500.00]
 MS Apotteri

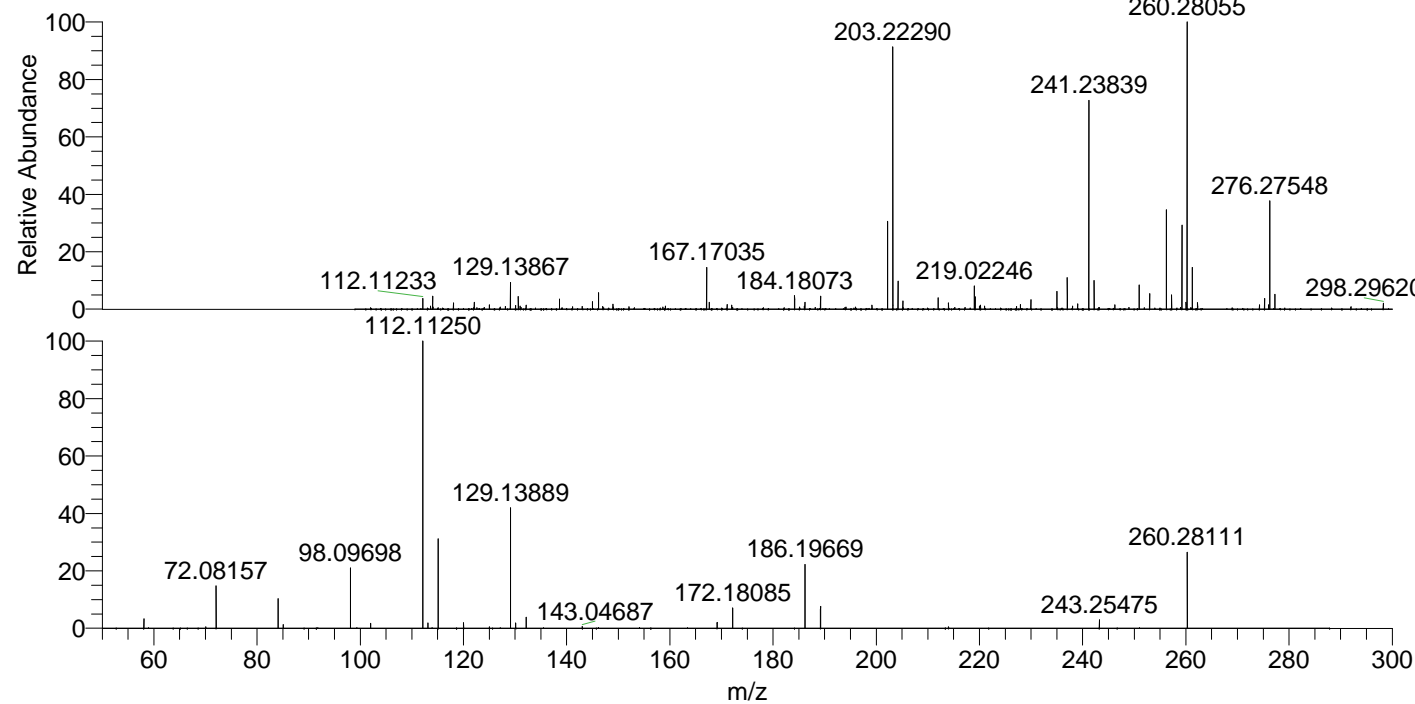
NL: 1.35E7
 Base Peak m/z= 260.28012-260.28272 F:
 FTMS + p ESI Full ms [100.00-1500.00]
 MS Apotteri

NL: 0
 Base Peak m/z= 130.66397-130.66527 F:
 FTMS + p ESI Full ms [100.00-1500.00]
 MS Apotteri

NL: 2.38E6
 Base Peak m/z= 50.00000-1500.00000 F:
 FTMS + p ESI d Full ms2
 260.28@hcd35.00 [50.00-285.00] MS
 Apotteri

Apotteri#400-410 RT: 1.00-1.03 AV: 3
 F: FTMS + p ESI d Full ms2 260.28@h ...
 m/z= 50.00000-1000.00000

m/z	Intensity	Relative
58.06603	37672.8	3.34
72.08157	166953.9	14.81
84.08142	118796.3	10.54
85.08481	14688.3	1.30
98.09698	236141.3	20.94
102.02051	18965.5	1.68
112.11250	1127548.1	100.00
113.11578	20635.4	1.83
115.12336	350708.6	31.10
120.03105	22164.0	1.97
125.03651	5660.4	0.50
129.13889	470891.2	41.76
130.14240	21203.2	1.88
132.14972	45027.8	3.99
143.04687	6805.7	0.60
169.17010	23053.0	2.04
172.18085	79775.8	7.08
186.19669	257475.0	22.83
189.20767	86359.4	7.66
243.25475	32913.8	2.92
260.28111	297594.7	26.39



NL: 5.92E6
 Apotteri#409 RT: 1.03
 AV: 1 T: FTMS + p ESI
 Full ms [100.00-1500.00]

NL: 1.12E6
 Apotteri#398-410 RT:
 1.00-1.03 AV: 3 F: FTMS
 + p ESI d Full ms2
 260.28@hcd35.00
 [50.00-285.00]