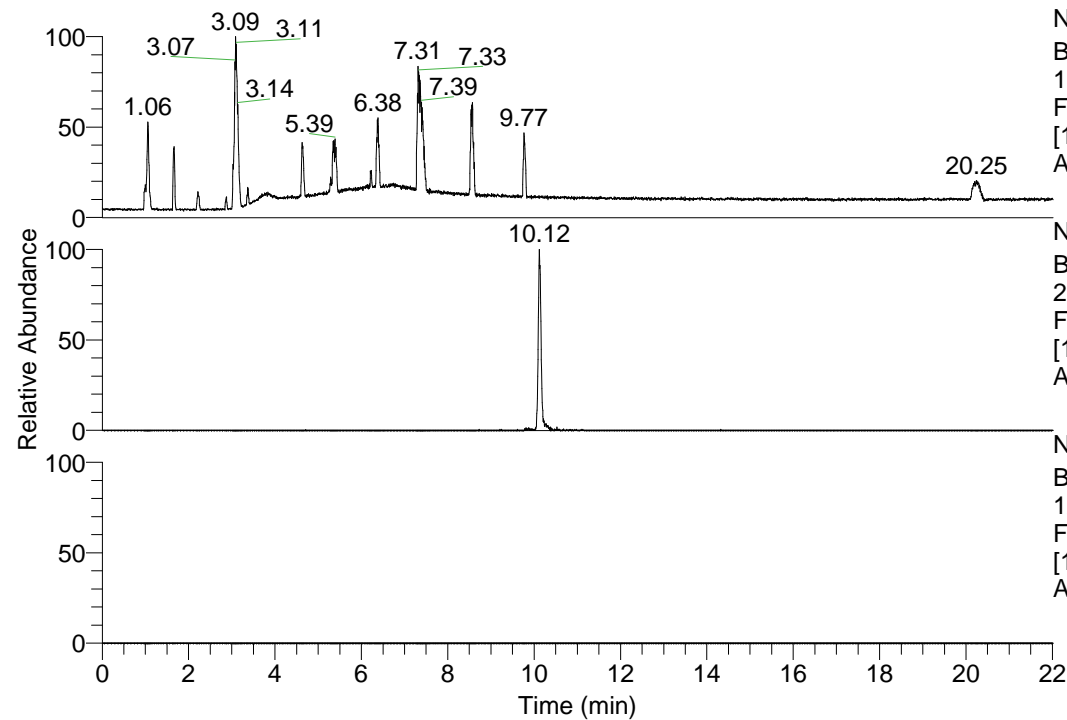


RT: 0.00 - 22.01



NL: 1.69E8  
 Base Peak m/z=  
 100.00000-1500.00000 F:  
 FTMS + p ESI Full ms  
 [100.00-1500.00] MS  
 Apotteri\_HDX

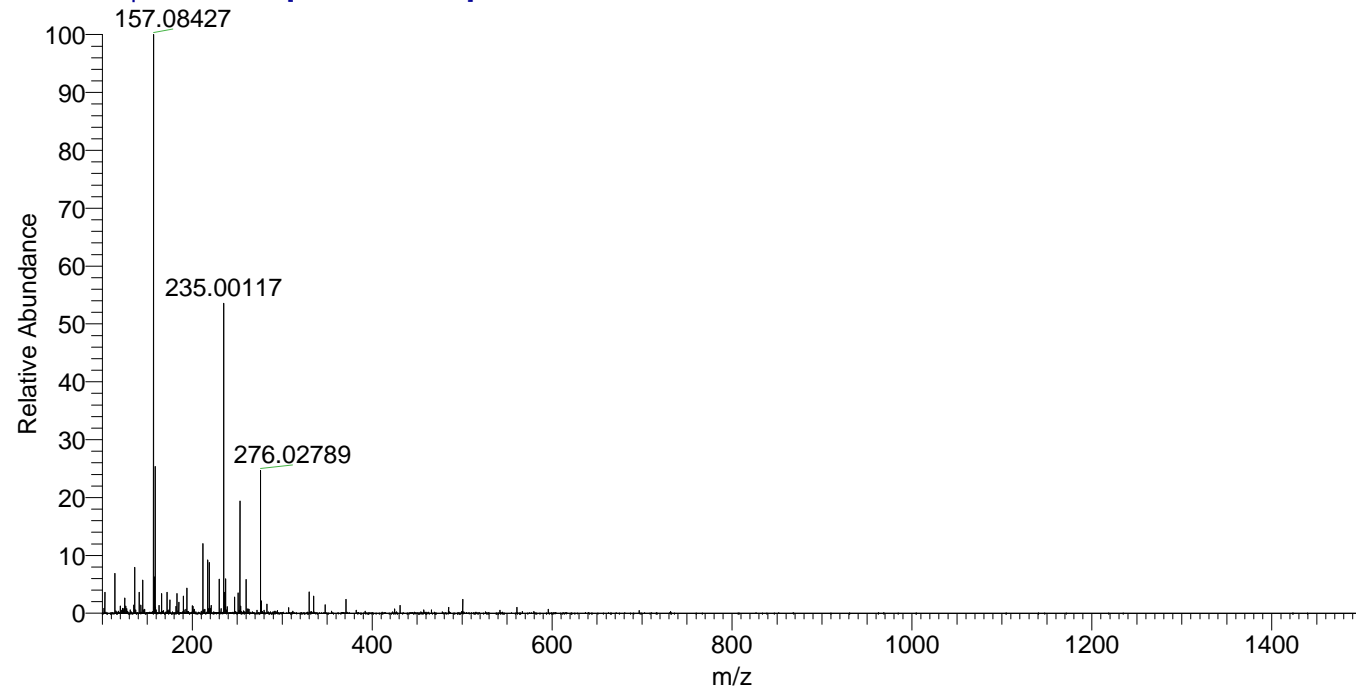
NL: 6.69E5  
 Base Peak m/z=  
 251.19076-251.19328 F:  
 FTMS + p ESI Full ms  
 [100.00-1500.00] MS  
 Apotteri\_HDX

NL: 0  
 Base Peak m/z=  
 126.60243-126.60369 F:  
 FTMS + p ESI Full ms  
 [100.00-1500.00] MS  
 Apotteri\_HDX

Apotteri\_HDX#1643 RT: 10.12  
 T: FTMS + p ESI Full ms [100.00-1500.00]  
 m/z= 251.00000-252.00000

m/z	Intensity	Relative	Delta (ppm)	Composition
251.19252	668939.4	100.00	-1.99	C <sub>14</sub> H <sub>17</sub> <sup>2</sup> H <sub>4</sub> ON <sub>3</sub>
			4.17	C <sub>14</sub> H <sub>15</sub> <sup>2</sup> H <sub>5</sub> ON <sub>3</sub>

Apotteri\_HDX #1643 RT: 10.12 AV: 1 NL: 1.91E7  
 T: FTMS + p ESI Full ms [100.00-1500.00]



Apotteri\_HDX #1643 RT: 10.12 AV: 1 NL: 3.70E6  
 T: FTMS + p ESI Full ms [100.00-1500.00]

