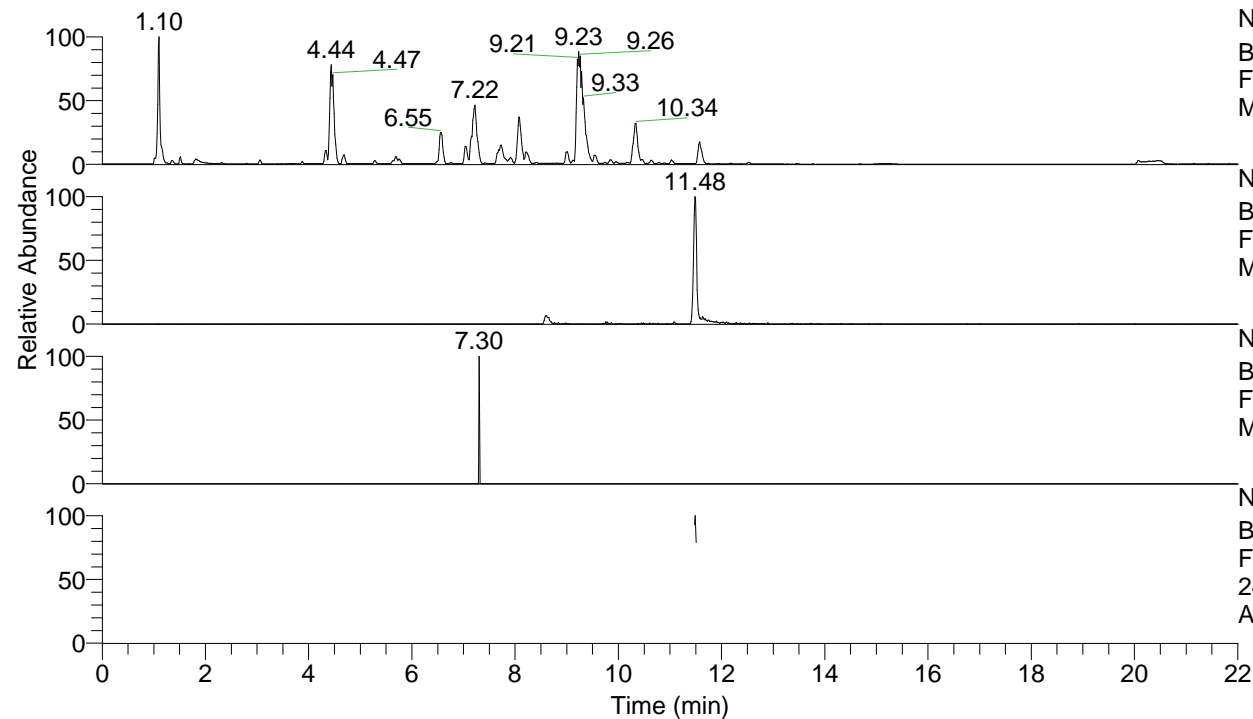


RT: 0.00 - 22.00



NL: 1.25E8
 Base Peak m/z= 100.00000-1500.00000 F:
 FTMS + p ESI Full ms [100.00-1500.00]
 MS Apotteri

NL: 2.80E5
 Base Peak m/z= 246.15941-246.16187 F:
 FTMS + p ESI Full ms [100.00-1500.00]
 MS Apotteri

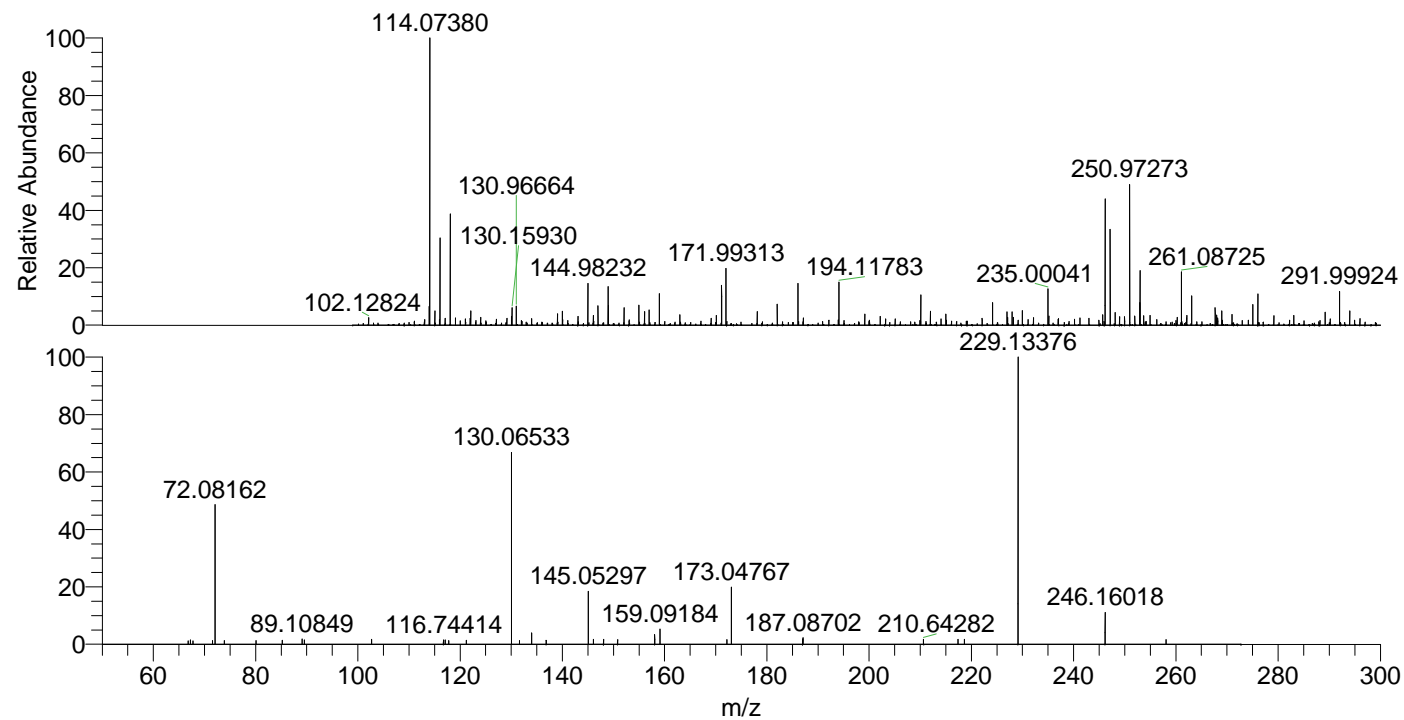
NL: 1.16E3
 Base Peak m/z= 123.58361-123.58485 F:
 FTMS + p ESI Full ms [100.00-1500.00]
 MS Apotteri

NL: 7.26E4
 Base Peak m/z= 50.00000-1500.00000 F:
 FTMS + p ESI d Full ms2
 246.16@hcd35.00 [50.00-270.00] MS
 Apotteri

Apotteri#4612-4625 RT: 11.48-11.51

F: FTMS + p ESI d Full ms2 246.16 ...
 m/z= 50.00000-1000.00000

m/z	Intensity	Relative
66.78563	721.4	1.13
67.24170	998.0	1.57
67.72689	751.9	1.18
71.59540	806.8	1.27
72.08162	31067.8	48.76
73.87650	799.5	1.25
80.05724	833.4	1.31
85.23049	867.8	1.36
89.10849	1194.6	1.88
89.55751	1008.8	1.58
102.69517	1132.8	1.78
116.74414	963.5	1.51
117.10844	930.5	1.46
117.76307	842.5	1.32
121.22326	862.3	1.35
130.06533	43289.8	67.95
131.62105	834.6	1.31
133.97029	2574.8	4.04
136.83988	886.8	1.39
145.05297	11768.6	18.47
146.06092	1128.4	1.77
148.05176	1095.1	1.72
150.80360	1027.4	1.61
158.06148	2148.0	3.37
159.09184	3391.9	5.32
172.17348	995.2	1.56
173.04767	12938.6	20.31
186.99778	1185.7	1.86
187.08702	1479.0	2.32
210.64282	1137.4	1.79
217.38216	1067.3	1.68
218.64473	1122.7	1.76
229.13376	63711.7	100.00
246.16018	7077.7	11.11
258.08082	1058.3	1.66



NL: 6.30E5
 Apotteri#4615 RT: 11.48
 AV: 1 T: FTMS + p ESI
 Full ms [100.00-1500.00]

NL: 6.37E4
 Apotteri#4606-4627 RT:
 11.48-11.51 AV: 3 F:
 FTMS + p ESI d Full ms2
 246.16@hcd35.00
 [50.00-270.00]