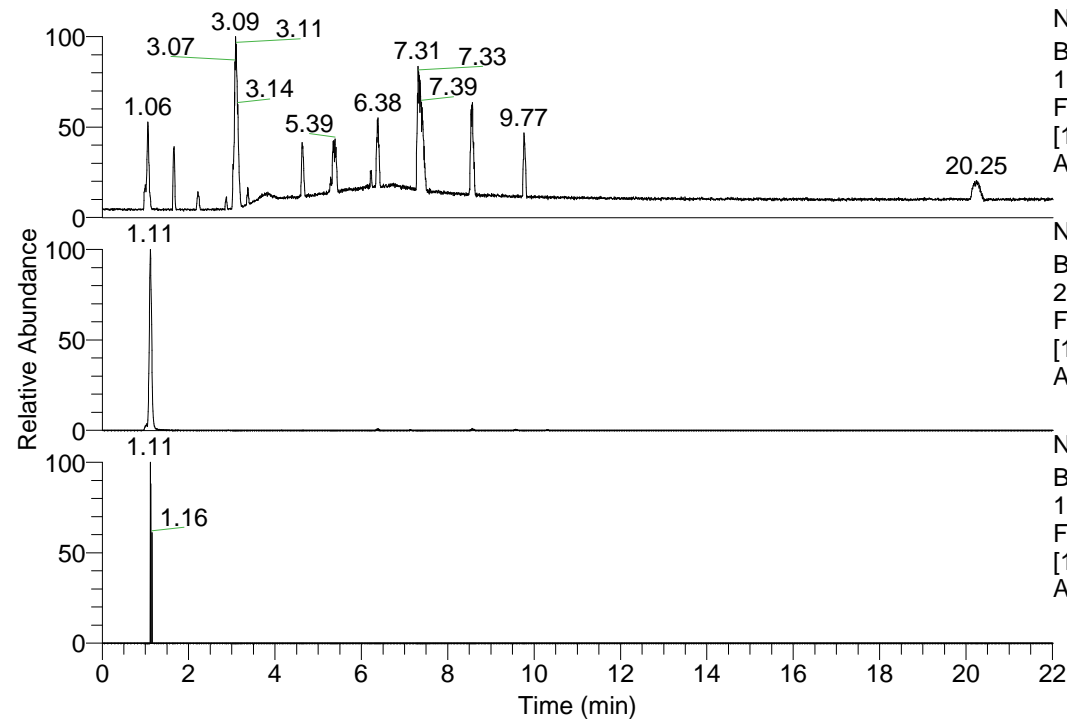


RT: 0.00 - 22.01



NL: 1.69E8
 Base Peak m/z=
 100.00000-1500.00000 F:
 FTMS + p ESI Full ms
 [100.00-1500.00] MS
 Apotteri_HDX

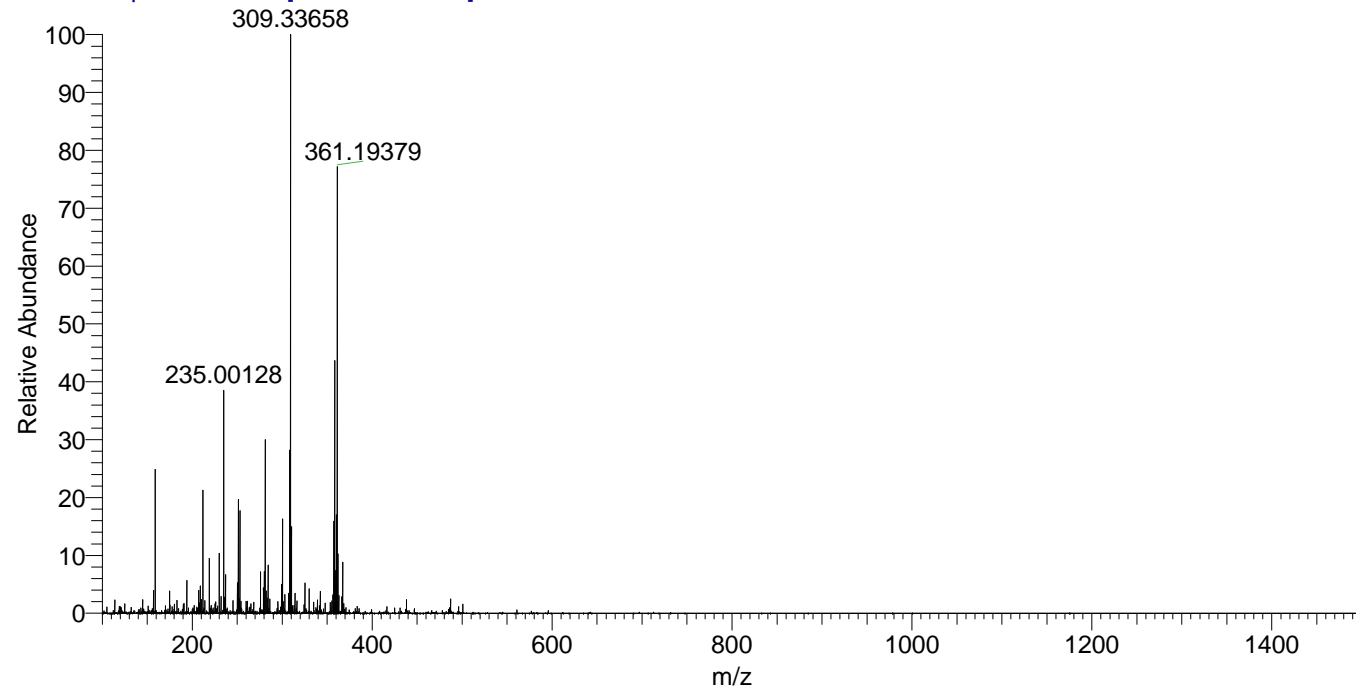
NL: 4.40E6
 Base Peak m/z=
 251.27054-251.27306 F:
 FTMS + p ESI Full ms
 [100.00-1500.00] MS
 Apotteri_HDX

NL: 5.33E3
 Base Peak m/z=
 126.64232-126.64358 F:
 FTMS + p ESI Full ms
 [100.00-1500.00] MS
 Apotteri_HDX

Apotteri_HDX#169 RT: 1.11
 T: FTMS + p ESI Full ms [100.00-1500.00]
 m/z= 251.00000-252.00000

m/z	Intensity	Relative	Delta (ppm)	Composition
251.27242	4040640.8	100.00	-1.52	C ₁₂ H ₂₅ ² H ₅ ON ₄
			4.64	C ₁₂ H ₂₃ ² H ₆ ON ₄

Apotteri_HDX #169 RT: 1.11 AV: 1 NL: 1.99E7
 T: FTMS + p ESI Full ms [100.00-1500.00]



Apotteri_HDX #169 RT: 1.11 AV: 1 NL: 3.92E6
 T: FTMS + p ESI Full ms [100.00-1500.00]

